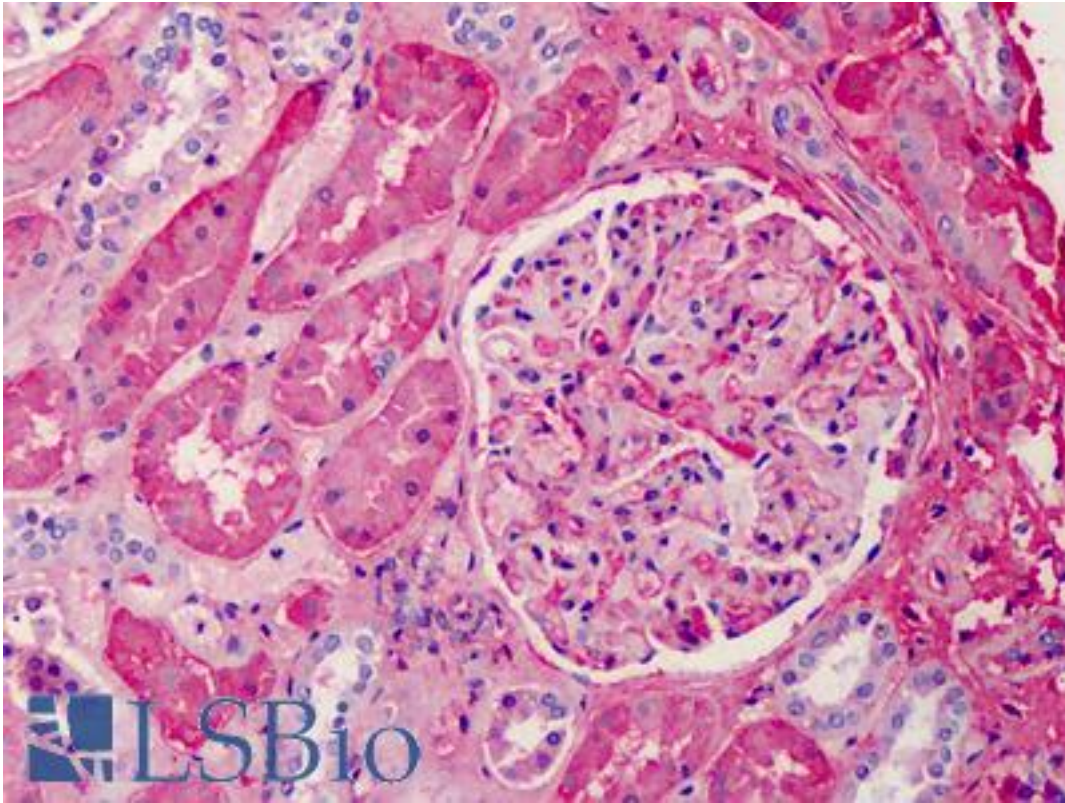


APOA1 / Apolipoprotein A 1 Goat anti-Human Polyclonal Antibody - LS-B2475 - LSBio	
<b>CatalogID:</b>	LS-B2475
<b>Validation:</b>	This antibody replaces catalog number LS-C20712. It has been validated for use in the following assays: IHC-P.
<b>Target:</b>	apolipoprotein A-I (APOA1)
<b>Synonyms:</b>	APOA1 Antibody, ApoA-I Antibody, APOAI Antibody, Apolipoprotein A-I Antibody, Apolipoprotein A1 Antibody, Apo-AI Antibody
<b>Host</b>	APOA1 antibody was produced in Goat
<b>Clonality:</b>	Polyclonal
<b>Isotype:</b>	IgG
<b>Immunogen Species:</b>	APOA1 / Apolipoprotein A 1 antibody was raised against Human
<b>Immunogen:</b>	APOA1 / Apolipoprotein A 1 antibody was raised against highly purified Apolipoprotein Type A-I from human plasma.
<b>Specificity:</b>	Recognizes human Apolipoprotein A-I; minimum cross-reactivity against Type A-II, B, C-I, C-II, C-III, E and J Apolipoproteins and other human serum proteins.
<b>Reactivity:</b>	Human
<b>Purification:</b>	Immunoaffinity purified
<b>Presentation:</b>	BBS, pH 8.0, 0.005 M EDTA, 0.01% sodium azide, 40% glycerol. No stabilizing proteins added.
<b>Recommended Storage:</b>	+4°C or -20°C, Avoid repeated freezing and thawing.
<b>Usage Summary:</b>	Immunohistochemistry: LS-B2475 was validated for use in immunohistochemistry on a panel of 21 formalin-fixed, paraffin-embedded (FFPE) human tissues after heat induced antigen retrieval in pH 6.0 citrate buffer. After incubation with the primary antibody, slides were incubated with biotinylated secondary antibody, followed by alkaline phosphatase-streptavidin and chromogen. The stained slides were evaluated by a pathologist to confirm staining specificity. The optimal working concentration for LS-B2475 was determined to be 5 ug/ml.
<b>Uses:</b>	IHC - Paraffin (5 µg/ml), Western blot (1:2500 - 1:5000), Immunoprecipitation, ELISA (1:5000 - 1:10000) (Optimal dilution to be determined by the researcher)
<b>Size:</b>	50 µg
<b>Concentration:</b>	0.5 mg/ml

**Immunohistochemistry Image:**



Anti-Apolipoprotein A I antibody IHC staining of human kidney. Immunohistochemistry of formalin-fixed, paraffin-embedded tissue after heat-induced antigen retrieval. Antibody LS-B2475 concentration 5 ug/ml.

**Requested From:**

Japan

Laboratory Reagent For In Vitro Research Use Only

Not for resale without prior written consent from LifeSpan BioSciences, Inc.

Created on 9/23/2014

© 2014 LifeSpan BioSciences