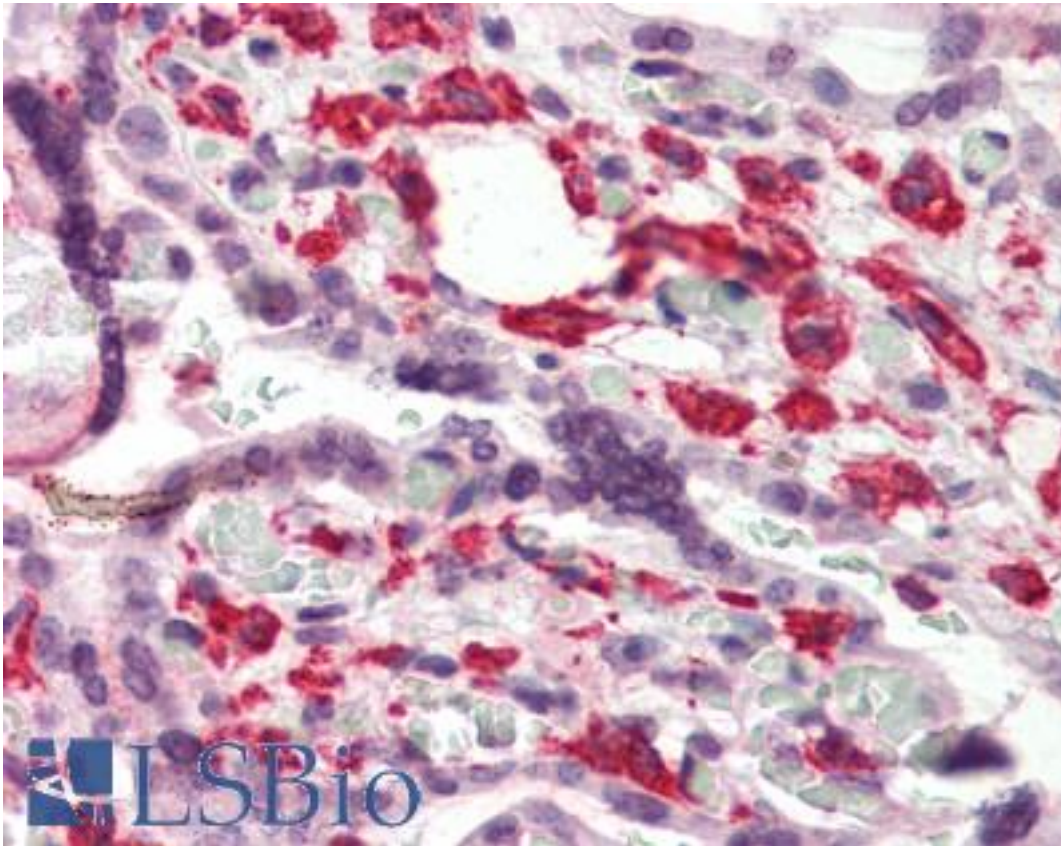


MKP-1 / DUSP1 Rabbit anti-Human Polyclonal (C-Terminus) Antibody - LS-B2469 - LSBio	
<b>CatalogID:</b>	LS-B2469
<b>Validation:</b>	This antibody replaces catalog number LS-C16572. It has been validated for use in the following assays: IHC-P.
<b>Target:</b>	dual specificity phosphatase 1 (DUSP1)
<b>Synonyms:</b>	DUSP1 Antibody, 3CH134 Antibody, Dual specificity phosphatase 1 Antibody, ERK -inactivating phosphatase Antibody, HVH1 Antibody, MAP kinase phosphatase 1 Antibody, VH1 Antibody, PTPN10 Antibody, CL100 Antibody, MKP-1 Antibody, MKP1 Antibody
<b>Family / Subfamily:</b>	Protein Phosphatase / Dual specificity MKP
<b>Host</b>	DUSP1 antibody was produced in Rabbit
<b>Clonality:</b>	Polyclonal
<b>Isotype:</b>	IgG
<b>Immunogen Species:</b>	MKP-1 / DUSP1 antibody was raised against Human
<b>Antigen Type:</b>	Synthetic peptide - KLH conjugated
<b>Immunogen:</b>	MKP-1 / DUSP1 antibody was raised against KLH-conjugated, synthetic peptide corresponding to amino acids 87-101 (DERSAALDGAKRDGT-C) of human MAP kinase phosphatase 1 (MKP1), with a C-terminal cysteine added for conjugation purposes. The immunizing sequence is identical in rat and mouse. Percent identity by BLAST analysis: Human, Gorilla, Marmoset, Rat, Dog (100%); Monkey, Mouse, Panda, Bovine, Rabbit (93%); Hamster, Pig (87%); Elephant (80%).
<b>Specificity:</b>	Recognizes human MKP1, Mr ~42kD. Species cross-reactivity: mouse. Predicted to cross-react with rat based on sequence homology.
<b>Epitope:</b>	C-Terminus
<b>Reactivity:</b>	Human, Gorilla, Rat, Dog
<b>Predicted Reactivity:</b>	Monkey, Mouse, Bovine, Rabbit
<b>Purification:</b>	Protein A purified
<b>Presentation:</b>	0.1 M Tris-glycine, pH 7.4, 0.15 M sodium chloride, 0.05% sodium azide, before the addition of glycerol to 30%
<b>Recommended Storage:</b>	Long term: -20°C; Short term: +4°C. Avoid repeat freeze-thaw cycles.
<b>Usage Summary:</b>	Immunohistochemistry: LS-B2469 was validated for use in immunohistochemistry on a panel of 21 formalin-fixed, paraffin-embedded (FFPE) human tissues after heat induced antigen retrieval in pH 6.0 citrate buffer. After incubation with the primary antibody, slides were incubated with biotinylated secondary antibody, followed by alkaline phosphatase-streptavidin and chromogen. The stained slides were evaluated by a pathologist to confirm staining specificity. The optimal working concentration for LS-B2469 was determined to be 5 ug/ml. Western Blot: 0.1-1 ug/ml detects MKP1 in RIPA lysates from 3T3/A31 cells. 3T3/A31 cell lysate was resolved by electrophoresis, transferred to nitrocellulose and probed with anti-MKP1 (0.3 ug/ml).
<b>Uses:</b>	IHC - Paraffin (5 µg/ml), Western blot (0.1 - 1 µg/ml) (Optimal dilution to be determined by the researcher)

<b>Size:</b>	50 µg
<b>Concentration:</b>	1 mg/ml

**Immunohistochemistry Image:**



Anti-DUSP1 antibody IHC of human placenta. Immunohistochemistry of formalin-fixed, paraffin-embedded tissue after heat-induced antigen retrieval. Antibody LS-B2469 concentration 5 ug/ml.

<b>Requested From:</b>	Japan
------------------------	-------

Laboratory Reagent For In Vitro Research Use Only

Not for resale without prior written consent from LifeSpan BioSciences, Inc.

Created on 9/23/2014

© 2014 LifeSpan BioSciences