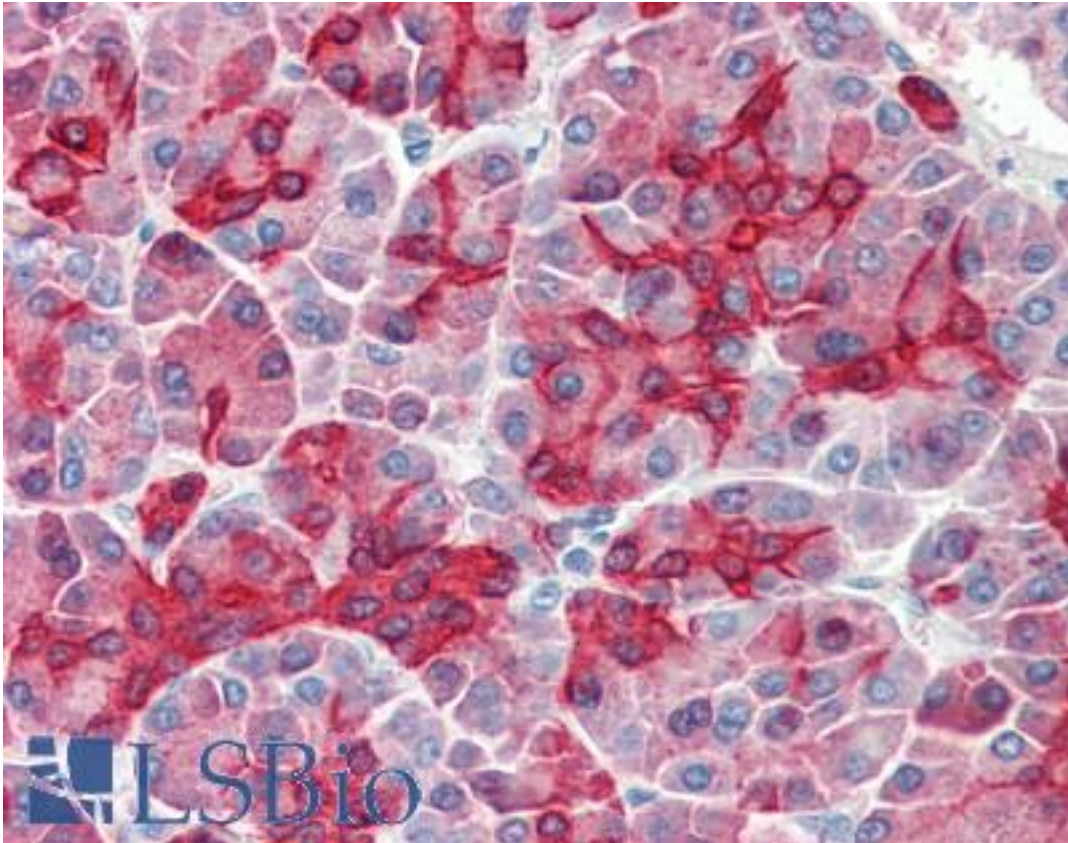


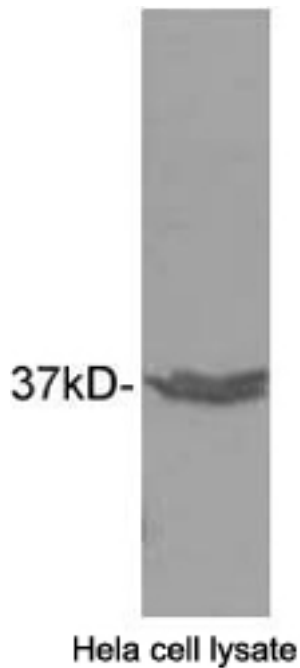
ANXA8 / Annexin A8 Rabbit anti-Human Polyclonal Antibody - LS-B2459 - LSBio	
<b>CatalogID:</b>	LS-B2459
<b>Validation:</b>	This antibody replaces catalog number LS-C51563. It has been validated for use in the following assays: IHC-P.
<b>Target:</b>	annexin A8 (ANXA8)
<b>Synonyms:</b>	ANXA8 Antibody, Annexin A8 Antibody, Annexin-8 Antibody, ANX8 Antibody, Vascular anticoagulant-beta Antibody, Annexin VIII Antibody, VAC-beta Antibody
<b>Host</b>	ANXA8 antibody was produced in Rabbit
<b>Clonality:</b>	Polyclonal
<b>Isotype:</b>	IgG
<b>Immunogen Species:</b>	ANXA8 / Annexin A8 antibody was raised against Human
<b>Immunogen:</b>	ANXA8 / Annexin A8 antibody was raised against epitope peptide SSLEEDIQADTSGY. Percent identity by BLAST analysis: Human, Chimpanzee, Gorilla, Panda, Dog, Horse, Rabbit, Pig (100%); Mouse, Rat, Bovine (86%).
<b>Specificity:</b>	Human annexin A8. Not yet tested other species.
<b>Reactivity:</b>	Human, Chimpanzee, Gorilla, Dog, Horse, Pig, Rabbit
<b>Purification:</b>	Immunoaffinity purified
<b>Reconstitution:</b>	200 ul sterile ddH2O
<b>Presentation:</b>	PBS, pH 7.4, 0.02% sodium azide.
<b>Recommended Storage:</b>	Store at -20°C prior to reconstitution. After reconstitution under sterile conditions aliquot and freeze at -20°C. Avoid frequent freeze thaws. Store undiluted.
<b>Usage Summary:</b>	Immunohistochemistry: LS-B2459 was validated for use in immunohistochemistry on a panel of 21 formalin-fixed, paraffin-embedded (FFPE) human tissues after heat induced antigen retrieval in pH 6.0 citrate buffer. After incubation with the primary antibody, slides were incubated with biotinylated secondary antibody, followed by alkaline phosphatase-streptavidin and chromogen. The stained slides were evaluated by a pathologist to confirm staining specificity. The optimal working concentration for LS-B2459 was determined to be 5 ug/ml.
<b>Uses:</b>	IHC - Paraffin (5 µg/ml), Western blot (1.5 - 2 µg/ml) (Optimal dilution to be determined by the researcher)
<b>Size:</b>	100 µg
<b>Concentration:</b>	0.5 mg/ml (after resuspension)

**Immunohistochemistry Image:**



Anti-Annexin VIII antibody IHC of human pancreas. Immunohistochemistry of formalin-fixed, paraffin-embedded tissue after heat-induced antigen retrieval. Antibody LS-B2459 concentration 5 ug/ml.

**Western Blot Image:**



Primary antibody: 1.5 ug/ml Rabbit Anti-Annexin A8 Polyclonal Antibody LS-B2459  
Secondary antibody: Goat Anti-Rabbit IgG (H&L) [HRP] Polyclonal Antibody

**Requested From:**

Japan

Laboratory Reagent For In Vitro Research Use Only

Not for resale without prior written consent from LifeSpan BioSciences, Inc.

Created on 9/23/2014

© 2014 LifeSpan BioSciences