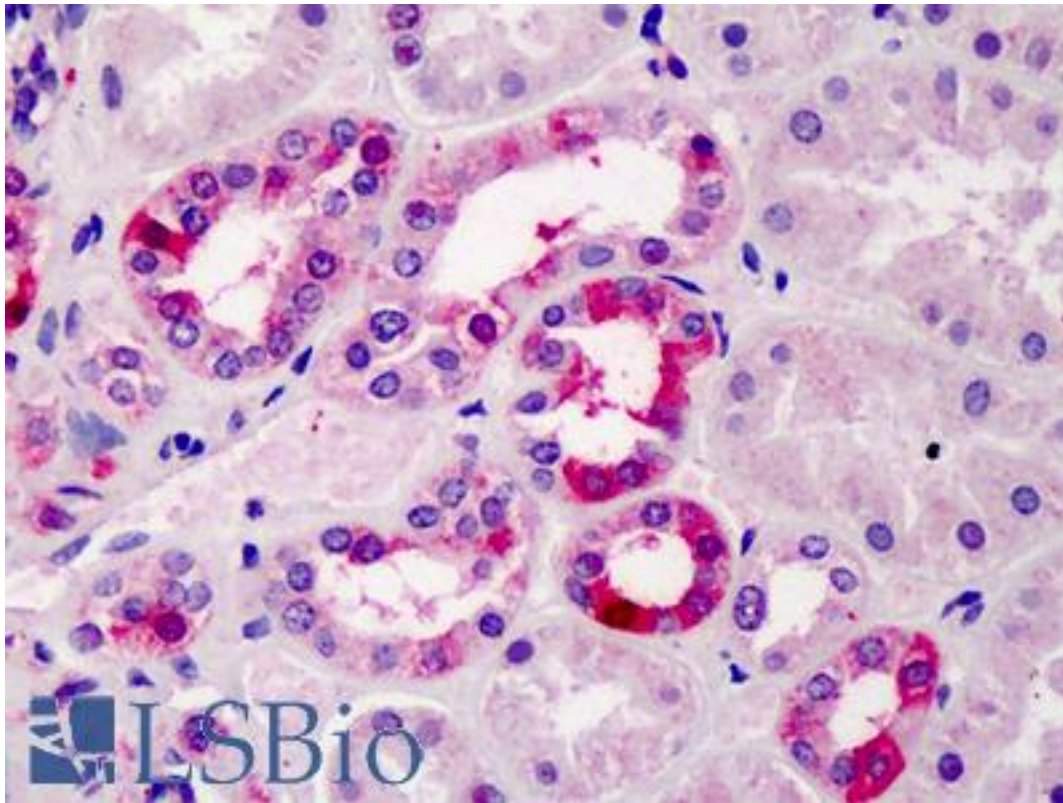


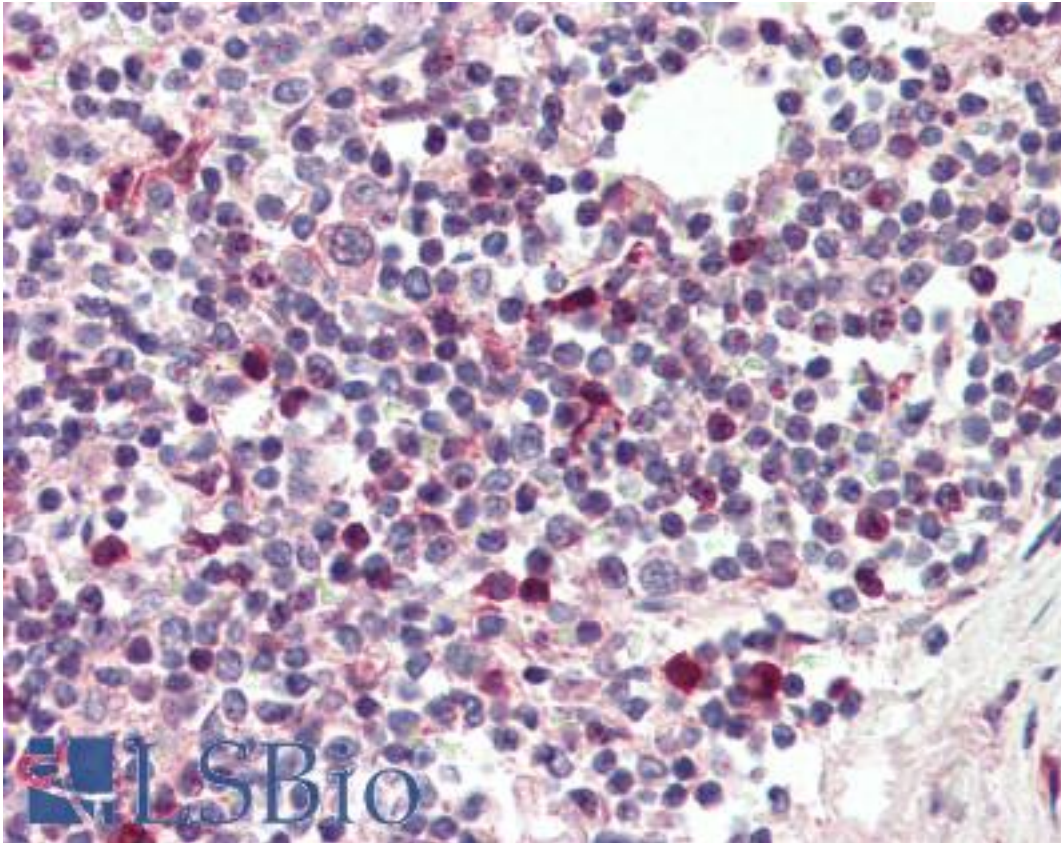
TFEC Goat anti-Mouse Polyclonal (Internal) Antibody - LS-B2458 - LSBio	
CatalogID:	LS-B2458
Validation:	This antibody replaces catalog number LS-C55572. It has been validated for use in the following assays: IHC-P.
Target:	transcription factor EC (TFEC)
Synonyms:	TFEC Antibody, HTFEC-L Antibody, TFE-C Antibody, Transcription factor EC-like Antibody, BHLHe34 Antibody, Transcription factor EC Antibody, TCFEC Antibody, TFEC-L Antibody, TFECL Antibody
Host	TFEC antibody was produced in Goat
Clonality:	Polyclonal
Immunogen Species:	TFEC antibody was raised against Mouse
Antigen Type:	Synthetic peptide
Immunogen:	TFEC antibody was raised against synthetic peptide C-HITKQQTHPERN from an internal region of mouse TFEC (NP_112475.1). Percent identity with other species by BLAST analysis: Mouse (100%), Rat (83%).
Specificity:	Mouse TFEC.
Epitope:	Internal
Reactivity:	Mouse, Human
Purification:	Immunoaffinity purified
Presentation:	Tris-buffered saline, pH 7.3, 0.5% BSA, 0.02% sodium azide
Recommended Storage:	Store at -20°C. Minimize freezing and thawing.
Usage Summary:	Immunohistochemistry: LS-B2458 was validated for use in immunohistochemistry on a panel of 21 formalin-fixed, paraffin-embedded (FFPE) human tissues after heat induced antigen retrieval in pH 6.0 citrate buffer. After incubation with the primary antibody, slides were incubated with biotinylated secondary antibody, followed by alkaline phosphatase-streptavidin and chromogen. The stained slides were evaluated by a pathologist to confirm staining specificity. The optimal working concentration for LS-B2458 was determined to be 5 ug/ml.
Uses:	IHC - Paraffin (5 µg/ml), ELISA (1:32000) (Optimal dilution to be determined by the researcher)
Size:	50 µg
Concentration:	0.5 mg/ml

Immunohistochemistry Image:



Anti-TFEC antibody IHC of human kidney. Immunohistochemistry of formalin-fixed, paraffin-embedded tissue after heat-induced antigen retrieval. Antibody LS-B2458 concentration 5 ug/ml.

Immunohistochemistry Image:



Anti-TFEC antibody IHC of human spleen. Immunohistochemistry of formalin-fixed, paraffin-embedded tissue after heat-induced antigen retrieval. Antibody LS-B2458 concentration 5 ug/ml.

Requested From:

Japan

Laboratory Reagent For In Vitro Research Use Only

Not for resale without prior written consent from LifeSpan BioSciences, Inc.

Created on 9/23/2014

© 2014 LifeSpan BioSciences