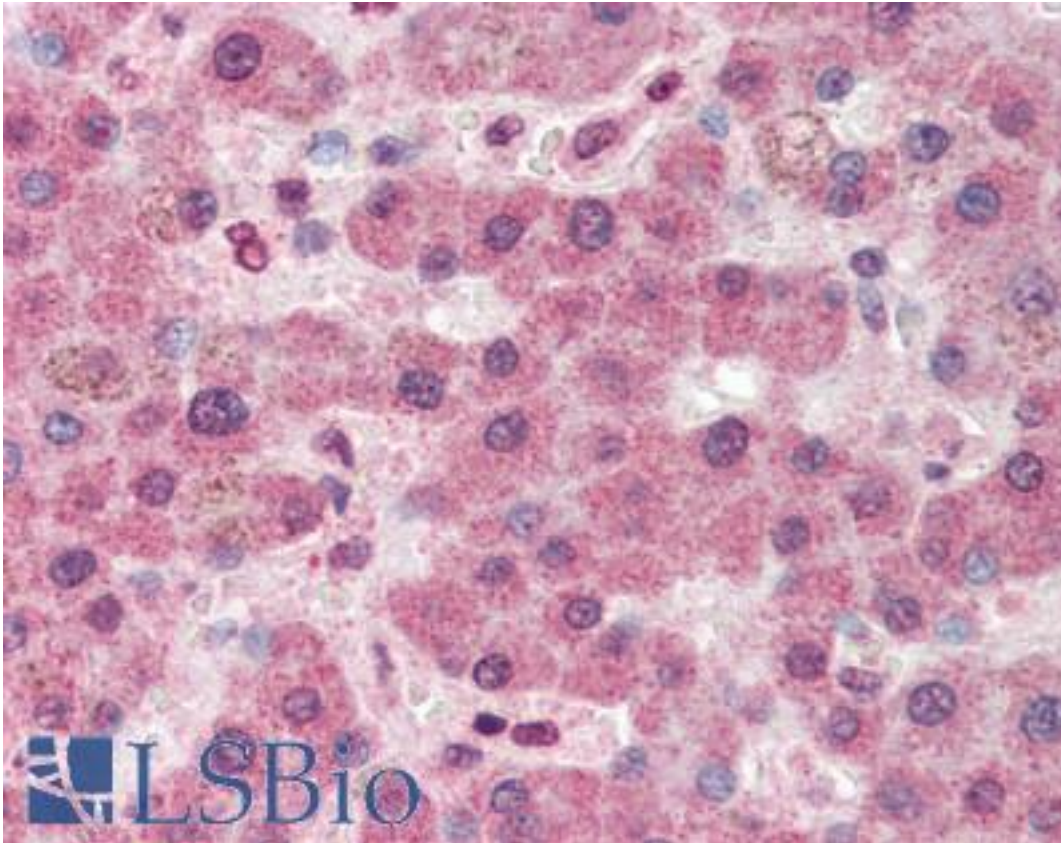


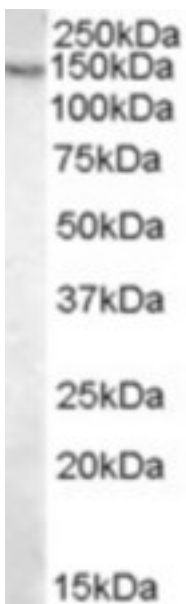
| PC / Pyruvate Carboxylase Goat anti-Human Polyclonal (Internal) Antibody - LS-B2457 - LSBio |   |
|---|---|
| <b>CatalogID:</b>   | LS-B2457  |
| <b>Validation:</b>  | This antibody replaces catalog number LS-C55348. It has been validated for use in the following assays: IHC-P.  |
| <b>Target:</b>  | pyruvate carboxylase (PC)   |
| <b>Synonyms:</b>  | PC Antibody, PCB Antibody, Pyruvate carboxylase Antibody, Pyruvic carboxylase Antibody  |
| <b>Host</b>   | PC antibody was produced in Goat  |
| <b>Clonality:</b>   | Polyclonal  |
| <b>Immunogen Species:</b>   | PC / Pyruvate Carboxylase antibody was raised against Human   |
| <b>Antigen Type:</b>  | Synthetic peptide   |
| <b>Immunogen:</b>   | PC / Pyruvate Carboxylase antibody was raised against synthetic peptide C-KFKEVKKAYVEANQ from an internal region of human PC / Pyruvate Carboxylase (NP_000911.2; NP_001035806.1; NP_071504.2). Percent identity by BLAST analysis: Human, Gorilla, Gibbon, Monkey, Marmoset, Mouse, Rat, Hamster, Panda, Dog, Bat, Bovine, Horse, Rabbit, Pig (100%); Goat, Stickleback, Pufferfish (93%); Opossum, Chicken, Xenopus, Zebrafish (86%).   |
| <b>Specificity:</b>   | Human PC / Pyruvate Carboxylase. All reported variants (NP_000911.2; NP_001035806.1; NP_071504.2) represent identical protein.  |
| <b>Epitope:</b>   | Internal  |
| <b>Reactivity:</b>  | Human, Gorilla, Gibbon, Monkey, Mouse, Rat, Bat, Bovine, Dog, Hamster, Horse, Pig, Rabbit   |
| <b>Predicted Reactivity:</b>  | Goat  |
| <b>Purification:</b>  | Immunoaffinity purified   |
| <b>Presentation:</b>  | Tris-buffered saline, pH 7.3, 0.5% BSA, 0.02% sodium azide  |
| <b>Recommended Storage:</b>   | Store at -20°C. Minimize freezing and thawing.  |
| <b>Usage Summary:</b>   | Immunohistochemistry: LS-B2457 was validated for use in immunohistochemistry on a panel of 21 formalin-fixed, paraffin-embedded (FFPE) human tissues after heat induced antigen retrieval in pH 6.0 citrate buffer. After incubation with the primary antibody, slides were incubated with biotinylated secondary antibody, followed by alkaline phosphatase-streptavidin and chromogen. The stained slides were evaluated by a pathologist to confirm staining specificity. The optimal working concentration for LS-B2457 was determined to be 5 ug/ml. |
| <b>Uses:</b>  | IHC - Paraffin (5 µg/ml), Western blot (0.03 - 0.1 µg/ml), ELISA (1:16000) (Optimal dilution to be determined by the researcher)  |
| <b>Size:</b>  | 50 µg   |
| <b>Concentration:</b>   | 0.5 mg/ml   |

**Immunohistochemistry Image:**



Anti-Pyruvate Carboxylase antibody IHC of human liver. Immunohistochemistry of formalin-fixed, paraffin-embedded tissue after heat-induced antigen retrieval. Antibody LS-B2457 concentration 5 ug/ml.

**Western Blot Image:**



Antibody (0.03 ug/ml) staining of Mouse Liver lysate (35 ug protein in RIPA buffer). Primary incubation was 1 hour. Detected by chemiluminescence.

|  |       |
|--|-------|
| <b>Requested From:</b>   | Japan |
| Laboratory Reagent For In Vitro Research Use Only                            |       |
| Not for resale without prior written consent from LifeSpan BioSciences, Inc. |       |
| Created on 9/23/2014   |       |
| © 2014 LifeSpan BioSciences  |       |