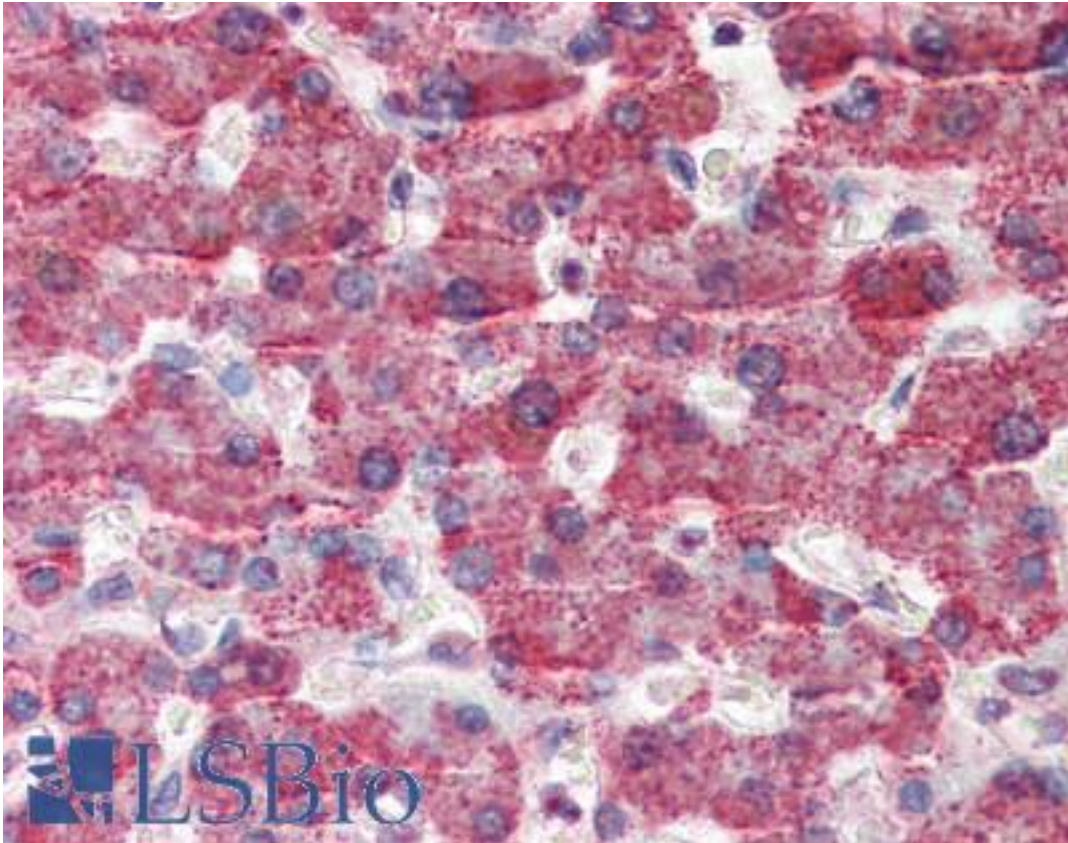


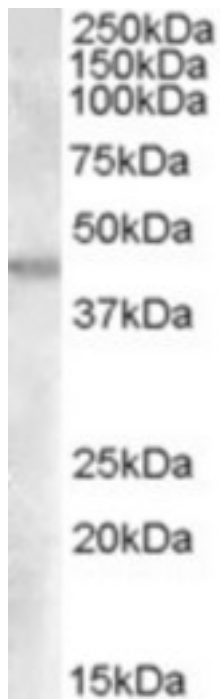
GOT2 Goat anti-Human Polyclonal (aa295-306) Antibody - LS-B2454 - LSBio	
CatalogID:	LS-B2454
Validation:	This antibody replaces catalog number LS-C54929. It has been validated for use in the following assays: IHC-P.
Target:	glutamic-oxaloacetic transaminase 2, mitochondrial (GOT2)
Synonyms:	GOT2 Antibody, FABP-1 Antibody, MitAAT Antibody, Transaminase A Antibody, FABPpm Antibody, Fatty acid-binding protein Antibody, KAT4 Antibody, KATIV Antibody, Kynurenine aminotransferase IV Antibody, MAspAT Antibody
Host	GOT2 antibody was produced in Goat
Clonality:	Polyclonal
Immunogen Species:	GOT2 antibody was raised against Human
Antigen Type:	Synthetic peptide
Immunogen:	GOT2 antibody was raised against synthetic peptide CKDADEAKRVES from an internal region of human GOT2 (NP_002071.2). Percent identity by BLAST analysis: Human, Gorilla, Orangutan, Monkey, Marmoset, Hamster, Panda, Horse, Opossum (100%); Mouse, Rat, Bovine, Pig, Catfish, Salmon, Zebrafish (92%); Elephant, Turkey, Chicken, Platypus, Xenopus, Pufferfish, Poplar, Castor bean (83%).
Specificity:	Human GOT2.
Epitope:	aa295-306
Reactivity:	Human, Gorilla, Orangutan, Monkey, Hamster, Horse
Predicted Reactivity:	Mouse, Rat, Bovine, Pig, Zebrafish
Purification:	Immunoaffinity purified
Presentation:	Tris-buffered saline, pH 7.3, 0.5% BSA, 0.02% sodium azide
Recommended Storage:	Store at -20°C. Minimize freezing and thawing.
Usage Summary:	Immunohistochemistry: LS-B2454 was validated for use in immunohistochemistry on a panel of 21 formalin-fixed, paraffin-embedded (FFPE) human tissues after heat induced antigen retrieval in pH 6.0 citrate buffer. After incubation with the primary antibody, slides were incubated with biotinylated secondary antibody, followed by alkaline phosphatase-streptavidin and chromogen. The stained slides were evaluated by a pathologist to confirm staining specificity. The optimal working concentration for LS-B2454 was determined to be 5 ug/ml.
Uses:	IHC - Paraffin (5 µg/ml), Western blot (0.03 - 0.1 µg/ml), ELISA (1:32000) (Optimal dilution to be determined by the researcher)
Size:	50 µg
Concentration:	0.5 mg/ml

Immunohistochemistry Image:



Anti-GOT2 antibody IHC of human liver. Immunohistochemistry of formalin-fixed, paraffin-embedded tissue after heat-induced antigen retrieval. Antibody LS-B2454 concentration 5 ug/ml.

Western Blot Image:



Antibody (0.03 ug/ml) staining of Human Kidney lysate (35 ug protein in RIPA buffer). Primary incubation was 1 hour. Detected by chemiluminescence.

Requested From:

Japan

Laboratory Reagent For In Vitro Research Use Only

Not for resale without prior written consent from LifeSpan BioSciences, Inc.

Created on 9/23/2014

© 2014 LifeSpan BioSciences