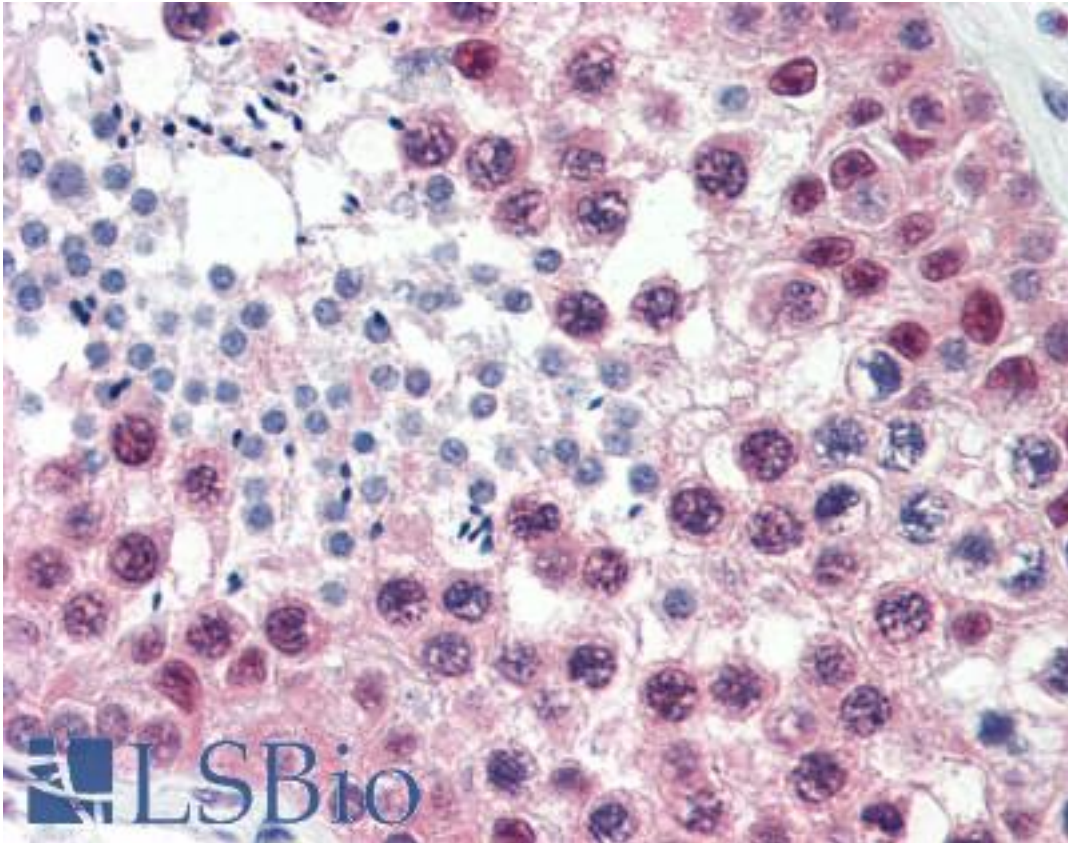


Cullin 1 / CUL1 Mouse anti-Human Monoclonal (C-Terminus) Antibody - LS-B2448 - LSBio	
<b>CatalogID:</b>	LS-B2448
<b>Validation:</b>	This antibody replaces catalog number LS-C6247. It has been validated for use in the following assays: IHC-P.
<b>Target:</b>	cullin 1 (CUL1)
<b>Synonyms:</b>	CUL1 Antibody, Cullin 1 Antibody, Cullin-1 Antibody, CUL-1 Antibody
<b>Host</b>	CUL1 antibody was produced in Mouse
<b>Clonality:</b>	Monoclonal
<b>Isotype:</b>	IgG1,k
<b>Immunogen Species:</b>	Cullin 1 / CUL1 antibody was raised against Human
<b>Antigen Type:</b>	Synthetic peptide
<b>Immunogen:</b>	Cullin 1 / CUL1 antibody was raised against a synthetic peptide corresponding to an 11 amino acid sequence at the C-terminus of the human CUL-1 protein.
<b>Specificity:</b>	Recognizes Cullin 1. Reacts specifically with the ~86kD CUL-1 protein and does not cross-react with the related CUL-2 protein. This antibody is confirmed to be reactive with human. Reactivity is confirmed from extracts of IMR90 (human fibroblasts) and Wi-38 cells.
<b>Epitope:</b>	C-Terminus
<b>Reactivity:</b>	Human
<b>Purification:</b>	Protein A purified
<b>Presentation:</b>	PBS, pH 7.4, 0.1% sodium azide.
<b>Recommended Storage:</b>	Long term: -20°C; Short term: +4°C. Avoid repeat freeze-thaw cycles.
<b>Usage Summary:</b>	Immunohistochemistry: LS-B2448 was validated for use in immunohistochemistry on a panel of 21 formalin-fixed, paraffin-embedded (FFPE) human tissues after heat induced antigen retrieval in pH 6.0 citrate buffer. After incubation with the primary antibody, slides were incubated with biotinylated secondary antibody, followed by alkaline phosphatase-streptavidin and chromogen. The stained slides were evaluated by a pathologist to confirm staining specificity. The optimal working concentration for LS-B2448 was determined to be 10 ug/ml. Immunoprecipitation: 5 -10 ug/ IP reaction.
<b>Uses:</b>	IHC - Paraffin (10 µg/ml), Western blot (1 - 3 µg/ml), Immunoprecipitation, ELISA (0.1 - 1 µg/ml) (Optimal dilution to be determined by the researcher)
<b>Size:</b>	50 µg
<b>Concentration:</b>	0.5 mg/ml

**Immunohistochemistry Image:**



Anti-CUL1 / Cullin 1 antibody IHC of human testis. Immunohistochemistry of formalin-fixed, paraffin-embedded tissue after heat-induced antigen retrieval. Antibody LS-B2448 concentration 10 ug/ml.

**Requested From:**

Japan

Laboratory Reagent For In Vitro Research Use Only

Not for resale without prior written consent from LifeSpan BioSciences, Inc.

Created on 9/23/2014

© 2014 LifeSpan BioSciences