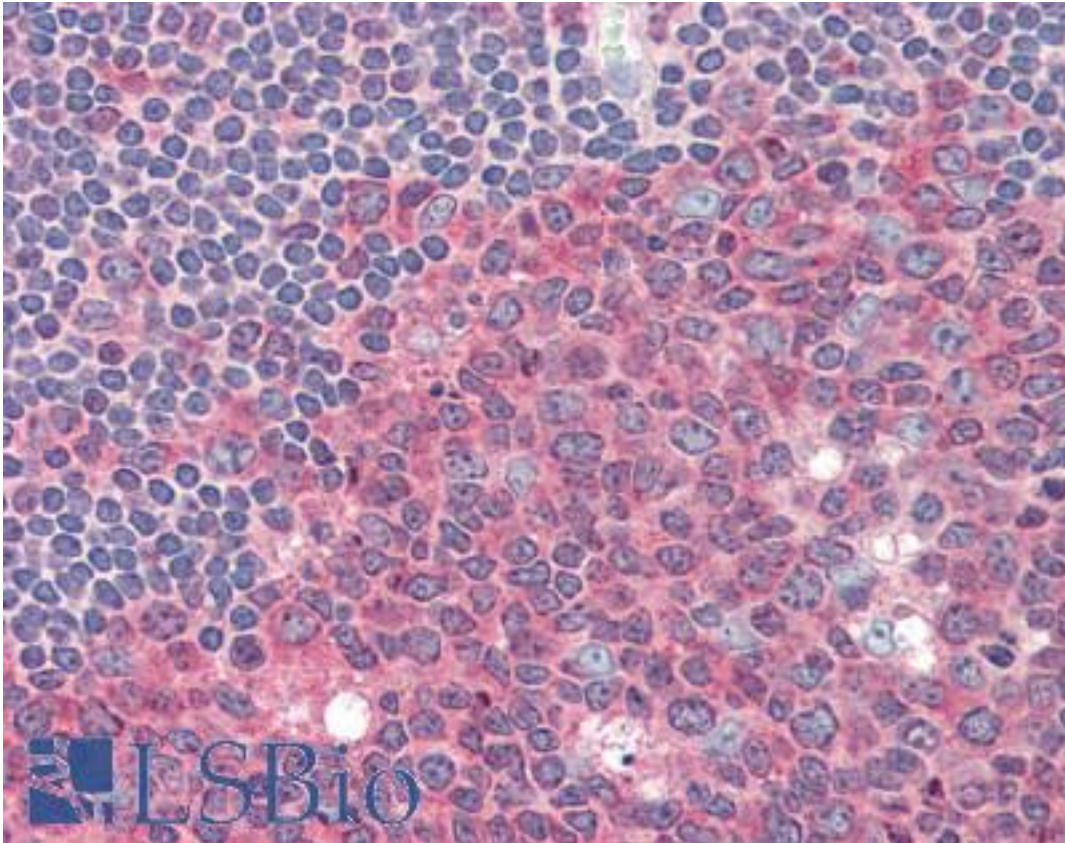


PKM / Pyruvate Kinase Rabbit anti-Human Polyclonal Antibody - LS-B2445 - LSBio

CatalogID:	LS-B2445
Validation:	This antibody replaces catalog number LS-C38682. It has been validated for use in the following assays: IHC-P.
Target:	pyruvate kinase, muscle (PKM)
Synonyms:	PKM Antibody, p58 Antibody, PK3 Antibody, PKM2 Antibody, Pyruvate Kinase Antibody, Pyruvate kinase 2/3 Antibody, Pyruvate kinase, m1 Antibody, Pyruvate kinase, muscle Antibody, TCB Antibody, Tumor M2-PK Antibody, OIP-3 Antibody, OIP3 Antibody, Opa-interacting protein 3 Antibody, CTHBP Antibody, PK, muscle type Antibody, PK2 Antibody, Pyruvate kinase isozymes M1/M2 Antibody, Pyruvate kinase muscle isozyme Antibody, THBP1 Antibody
Host	PKM antibody was produced in Rabbit
Clonality:	Polyclonal
Isotype:	IgG
Immunogen Species:	PKM / Pyruvate Kinase antibody was raised against Human
Antigen Type:	Synthetic peptide
Immunogen:	PKM / Pyruvate Kinase antibody was raised against synthetic peptide derived from the sequence of human PKM2 (KLH). Molecular Weight: 60kD.
Specificity:	Recognizes endogenous levels of total human PKM2 protein at 60kD. Species cross-reactivity: monkey, mouse and rat.
Reactivity:	Human, Monkey, Mouse, Rat
Purification:	Immunoaffinity purified
Presentation:	10 mM sodium HEPES, pH 7.5, 150 mM sodium chloride, 100 ug/ml BSA, 50% glycerol.
Recommended Storage:	+4°C or -20°C, Avoid repeated freezing and thawing.
Usage Summary:	Immunohistochemistry: LS-B2445 was validated for use in immunohistochemistry on a panel of 21 formalin-fixed, paraffin-embedded (FFPE) human tissues after heat induced antigen retrieval in pH 6.0 citrate buffer. After incubation with the primary antibody, slides were incubated with biotinylated secondary antibody, followed by alkaline phosphatase-streptavidin and chromogen. The stained slides were evaluated by a pathologist to confirm staining specificity. The optimal working concentration for LS-B2445 was determined to be 1:100.
Uses:	IHC - Paraffin (1:100), IHC - Frozen (1:100), Western blot (1:1000) (Optimal dilution to be determined by the researcher)
Size:	50 µl

Immunohistochemistry Image:



Anti-PKM2 antibody IHC of human tonsil. Immunohistochemistry of formalin-fixed, paraffin-embedded tissue after heat-induced antigen retrieval. Antibody LS-B2445 dilution 1:100.

Requested From:

Japan

Laboratory Reagent For In Vitro Research Use Only

Not for resale without prior written consent from LifeSpan BioSciences, Inc.

Created on 9/23/2014

© 2014 LifeSpan BioSciences