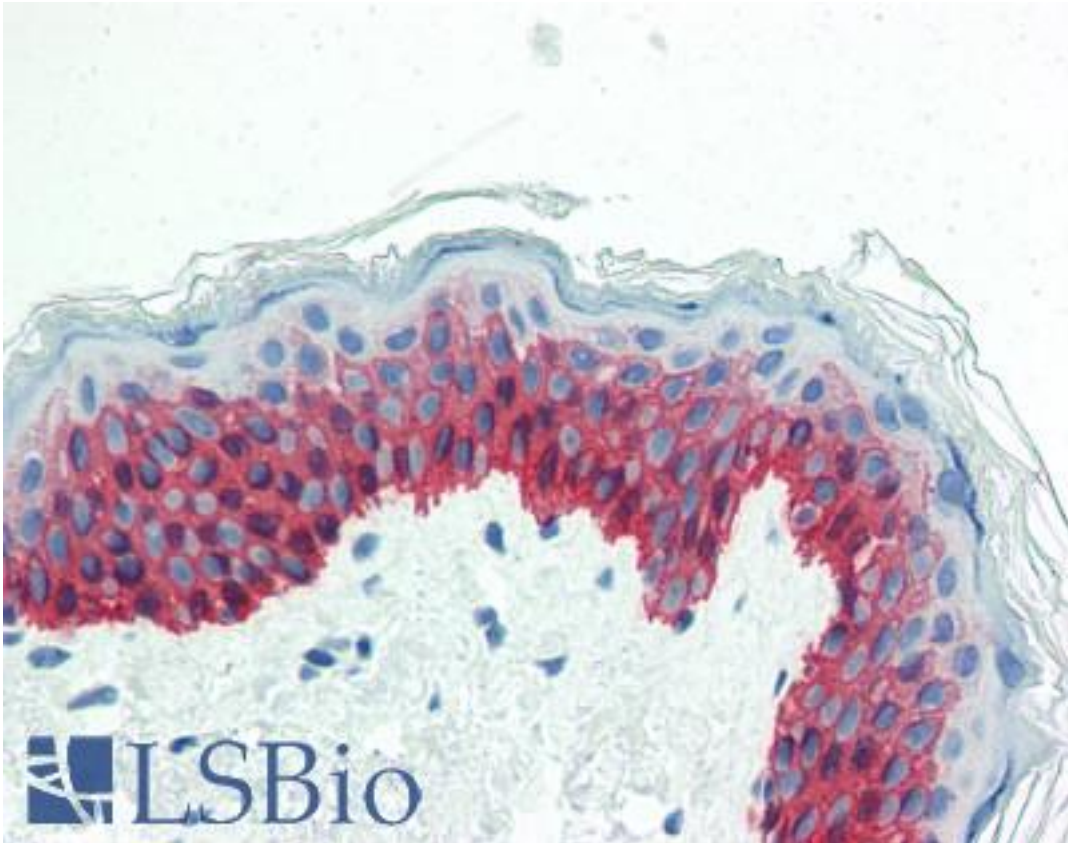


| KRT14 / CK14 / Cytokeratin 14 Mouse anti-Human Monoclonal (C-Terminus) Antibody - LS-B2443 - LSBio |   |
|--|---|
| <b>CatalogID:</b>  | LS-B2443  |
| <b>Validation:</b>   | This antibody replaces catalog number LS-C24972. It has been validated for use in the following assays: IHC-P.  |
| <b>Target:</b>   | keratin 14 (KRT14)  |
| <b>Synonyms:</b>   | KRT14 Antibody, CK-14 Antibody, EBS3 Antibody, EBS4 Antibody, K14 Antibody, Keratin-14 Antibody, CK14 Antibody, Cytokeratin 14 Antibody, Cytokeratin-14 Antibody, Keratin 14 Antibody, NFJ Antibody   |
| <b>Host</b>  | KRT14 antibody was produced in Mouse  |
| <b>Clonality:</b>  | Monoclonal  |
| <b>Isotype:</b>  | IgG3  |
| <b>Immunogen Species:</b>  | KRT14 / CK14 / Cytokeratin 14 antibody was raised against Human   |
| <b>Antigen Type:</b>   | Synthetic peptide   |
| <b>Immunogen:</b>  | KRT14 / CK14 / Cytokeratin 14 antibody was raised against a 15 amino acid synthetic peptide corresponding to the C-terminus of human keratin 14. Cellular Localization: Cytoplasmic.  |
| <b>Specificity:</b>  | Recognizes human keratin 14 at 50kD. Species cross-reactivity: Rat.   |
| <b>Epitope:</b>  | C-Terminus  |
| <b>Reactivity:</b>   | Human, Rat  |
| <b>Purification:</b>   | Protein G purified  |
| <b>Presentation:</b>   | PBS, pH 7.4, 0.2% BSA, 0.09% sodium azide, 40% glycerol.  |
| <b>Recommended Storage:</b>  | +4°C or -20°C, Avoid repeated freezing and thawing.   |
| <b>Usage Summary:</b>  | Immunohistochemistry: LS-B2443 was validated for use in immunohistochemistry on a panel of 21 formalin-fixed, paraffin-embedded (FFPE) human tissues after heat induced antigen retrieval in pH 6.0 citrate buffer. After incubation with the primary antibody, slides were incubated with biotinylated secondary antibody, followed by alkaline phosphatase-streptavidin and chromogen. The stained slides were evaluated by a pathologist to confirm staining specificity. The optimal working concentration for LS-B2443 was determined to be 1:50. Positive control: A431 cells, skin or squamous cell carcinoma. |
| <b>Uses:</b>   | IHC - Paraffin (1:50), Western blot (1 - 2 µg/ml) (Optimal dilution to be determined by the researcher)   |
| <b>Size:</b>   | 125 µl  |
| <b>Concentration:</b>  | 0.1 mg/ml   |

**Immunohistochemistry Image:**



Anti-KRT14 / Cytokeratin 14 antibody IHC of human skin. Immunohistochemistry of formalin-fixed, paraffin-embedded tissue after heat-induced antigen retrieval. Antibody LS-B2443 dilution 1:50.

**Requested From:**

Japan

Laboratory Reagent For In Vitro Research Use Only

Not for resale without prior written consent from LifeSpan BioSciences, Inc.

Created on 9/23/2014

© 2014 LifeSpan BioSciences