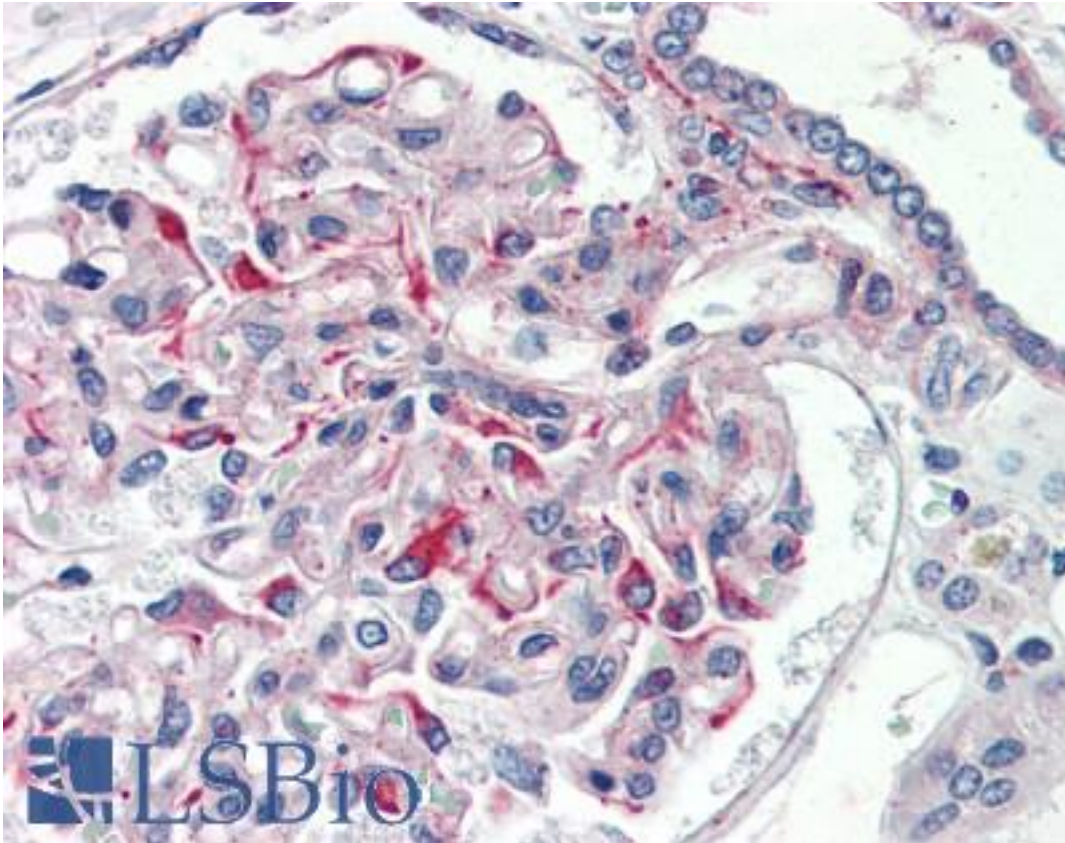


JAG1 / Jagged 1 Rabbit anti-Human Polyclonal (aa110-125) Antibody - LS-B2442 - LSBio	
CatalogID:	LS-B2442
Validation:	This antibody replaces catalog number LS-C24920. It has been validated for use in the following assays: IHC-P.
Target:	jagged 1 (JAG1)
Synonyms:	JAG1 Antibody, AGS Antibody, AHD Antibody, Alagille syndrome Antibody, CD339 antigen Antibody, HJ1 Antibody, Jagged1 Antibody, JAGL1 Antibody, Jagged Antibody, Jagged 1 Antibody, Protein jagged-1 Antibody, AWS Antibody, CD339 Antibody, Soluble protein jagged Antibody
Host	JAG1 antibody was produced in Rabbit
Clonality:	Polyclonal
Isotype:	IgG
Immunogen Species:	JAG1 / Jagged 1 antibody was raised against Human
Antigen Type:	Synthetic peptide
Immunogen:	JAG1 / Jagged 1 antibody was raised against synthetic peptide corresponding to aa 110-125 of human Jagged-1protein.
Specificity:	Recognizes human Jagged1 (JAG1).
Epitope:	aa110-125
Reactivity:	Human
Predicted Reactivity:	Chimpanzee, Mouse, Rat
Purification:	Protein A purified
Presentation:	PBS, pH 7.2, 0.01% sodium azide.
Recommended Storage:	+4°C or -20°C, Avoid repeated freezing and thawing.
Usage Summary:	Immunohistochemistry: LS-B2442 was validated for use in immunohistochemistry on a panel of 21 formalin-fixed, paraffin-embedded (FFPE) human tissues after heat induced antigen retrieval in pH 6.0 citrate buffer. After incubation with the primary antibody, slides were incubated with biotinylated secondary antibody, followed by alkaline phosphatase-streptavidin and chromogen. The stained slides were evaluated by a pathologist to confirm staining specificity. The optimal working concentration for LS-B2442 was determined to be 5 ug/ml.
Uses:	IHC - Paraffin (5 µg/ml), ICC, Immunofluorescence (1:100 - 1:500), Western blot (1:250 - 1:1000), ELISA (1:2500 - 1:10000) (Optimal dilution to be determined by the researcher)
Size:	50 µg
Concentration:	1 mg/ml

Immunohistochemistry Image:



Anti-JAG1 / Jagged 1 antibody IHC of human kidney. Immunohistochemistry of formalin-fixed, paraffin-embedded tissue after heat-induced antigen retrieval. Antibody LS-B2442 concentration 5 ug/ml.

Requested From:

Japan

Laboratory Reagent For In Vitro Research Use Only

Not for resale without prior written consent from LifeSpan BioSciences, Inc.

Created on 9/23/2014

© 2014 LifeSpan BioSciences