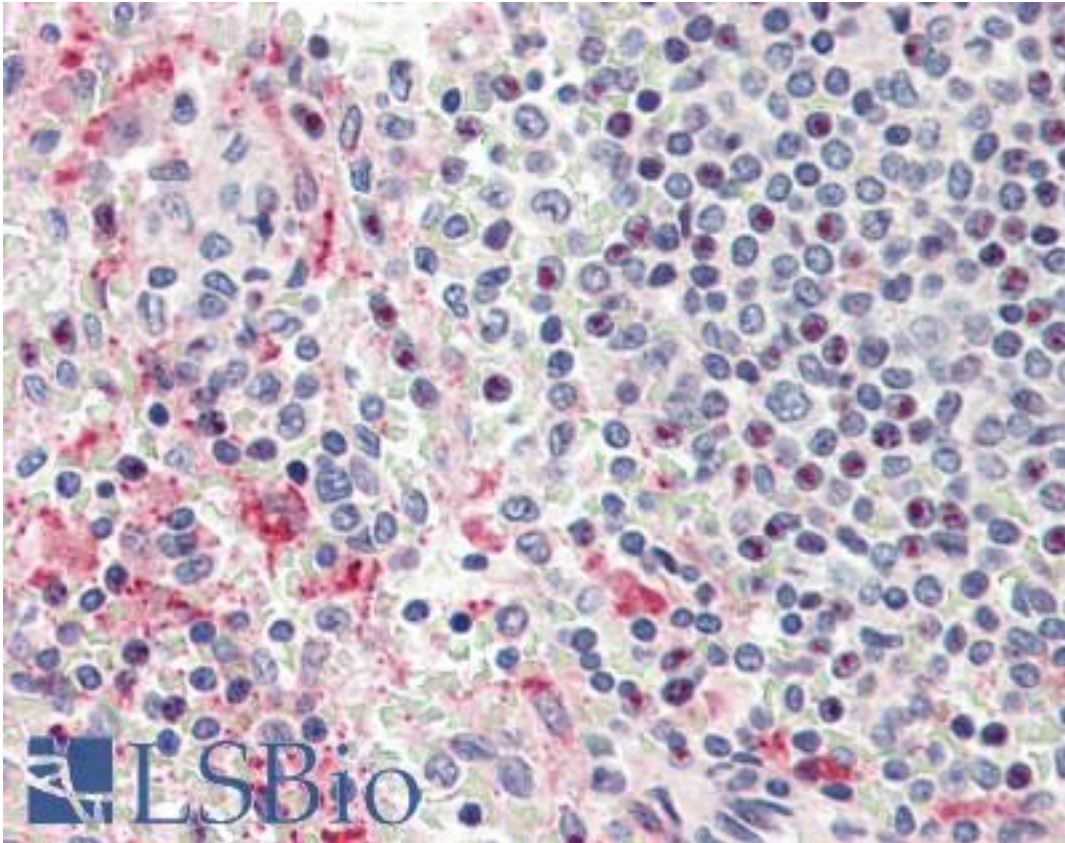


HPSE / Heparanase Rabbit anti-Human Polyclonal Antibody - LS-B2441 - LSBio	
CatalogID:	LS-B2441
Validation:	This antibody replaces catalog number LS-C24191. It has been validated for use in the following assays: IHC-P.
Target:	heparanase (HPSE)
Synonyms:	HPSE Antibody, Endo-glucuronidase Antibody, Heparanase-1 Antibody, Heparanase Antibody, HPA Antibody, HSE1 Antibody, HEP Antibody, HPA1 Antibody, HPSE1 Antibody, HPR1 Antibody
Host	HPSE antibody was produced in Rabbit
Clonality:	Polyclonal
Isotype:	IgG
Immunogen Species:	HPSE / Heparanase antibody was raised against Human
Immunogen:	HPSE / Heparanase antibody was raised against a heterodimeric recombinant protein consisting of the 50 kDa and 8 kDa subunits.
Specificity:	Recognizes the 65kD precursor as well as the 50kD and 8kD subunits of human or mouse Heparanase.
Reactivity:	Human, Mouse
Purification:	Protein G purified
Presentation:	PBS, pH 7.2, 0.01% Thimerosal
Recommended Storage:	Short term 4°C, long term aliquot and store at -20°C, avoid freeze thaw cycles.
Usage Summary:	Immunohistochemistry: LS-B2441 was validated for use in immunohistochemistry on a panel of 21 formalin-fixed, paraffin-embedded (FFPE) human tissues after heat induced antigen retrieval in pH 6.0 citrate buffer. After incubation with the primary antibody, slides were incubated with biotinylated secondary antibody, followed by alkaline phosphatase-streptavidin and chromogen. The stained slides were evaluated by a pathologist to confirm staining specificity. The optimal working concentration for LS-B2441 was determined to be 5 ug/ml. Western Blot: 1:1000.
Uses:	IHC - Paraffin (5 µg/ml), Western blot (1:500) (Optimal dilution to be determined by the researcher)
Size:	50 µg
Concentration:	1 mg/ml

Immunohistochemistry Image:



Anti-Heparanase antibody IHC of human spleen. Immunohistochemistry of formalin-fixed, paraffin-embedded tissue after heat-induced antigen retrieval. Antibody LS-B2441 concentration 5 ug/ml.

Requested From:

Japan

Laboratory Reagent For In Vitro Research Use Only

Not for resale without prior written consent from LifeSpan BioSciences, Inc.

Created on 9/23/2014

© 2014 LifeSpan BioSciences