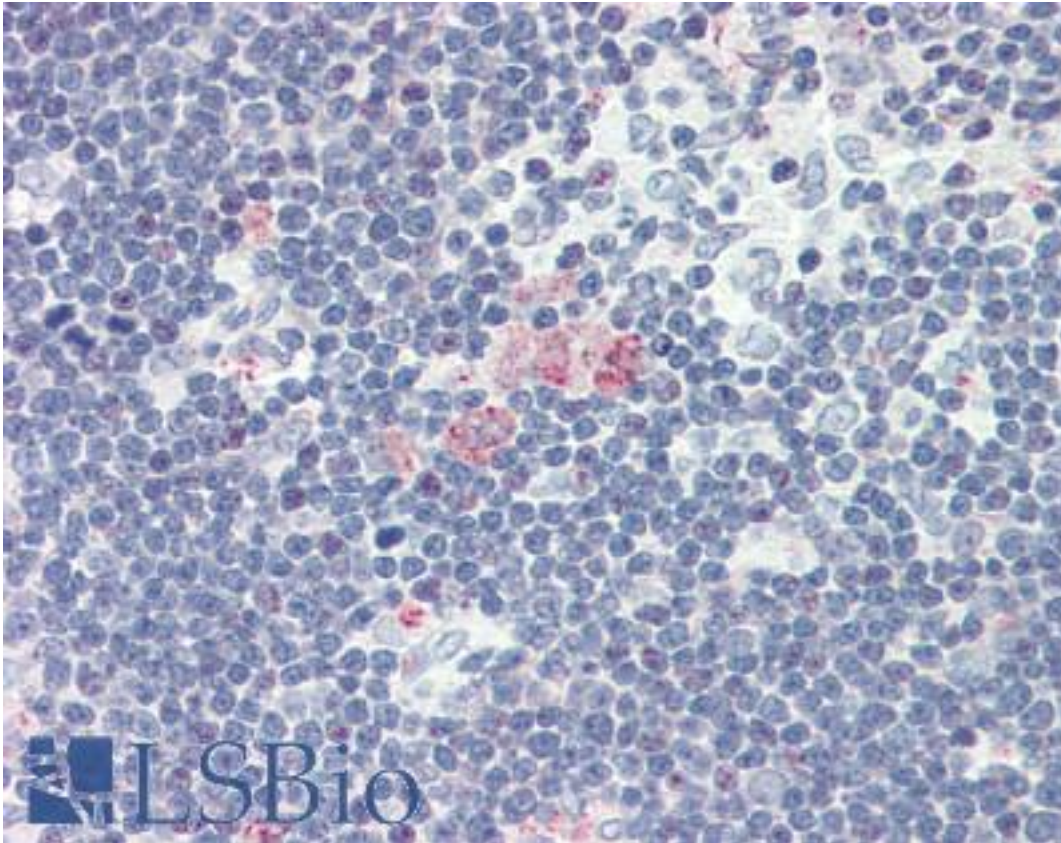


SDF-1 / CXCL12 Rabbit anti-Rat Polyclonal Antibody - LS-B2437 - LSBio	
CatalogID:	LS-B2437
Validation:	This antibody replaces catalog number LS-C17941. It has been validated for use in the following assays: IHC-P.
Target:	chemokine (C-X-C motif) ligand 12 (CXCL12)
Synonyms:	CXCL12 Antibody, C-X-C motif chemokine 12 Antibody, HIRH Antibody, IRH Antibody, SDF-1 Antibody, SDF-1b Antibody, SDF1A Antibody, SDF1B Antibody, TPAR1 Antibody, TLSF-a Antibody, TLSF-b Antibody, SDF-1a Antibody, SDF1 Antibody, Sdf1alpha Antibody, Stromal cell-derived factor 1 Antibody, TLSF Antibody, HSDF-1 Antibody, PBSF Antibody, SCYB12 Antibody
Family / Subfamily:	Interocrine / Interocrine alpha
Host	CXCL12 antibody was produced in Rabbit
Clonality:	Polyclonal
Isotype:	IgG
Immunogen Species:	SDF-1 / CXCL12 antibody was raised against Rat
Antigen Type:	Recombinant protein
Immunogen:	SDF-1 / CXCL12 antibody was raised against e. coli-expressed mouse SDF-1b.
Specificity:	Recognizes rat SDF-1b. Species cross-reactivity: mouse.
Reactivity:	Rat, Human, Mouse
Purification:	Protein A purified
Presentation:	0.05% sodium azide
Recommended Storage:	+4°C or -20°C, Avoid repeated freezing and thawing.
Usage Summary:	Immunohistochemistry: LS-B2437 was validated for use in immunohistochemistry on a panel of 21 formalin-fixed, paraffin-embedded (FFPE) human tissues after heat induced antigen retrieval in pH 6.0 citrate buffer. After incubation with the primary antibody, slides were incubated with biotinylated secondary antibody, followed by alkaline phosphatase-streptavidin and chromogen. The stained slides were evaluated by a pathologist to confirm staining specificity. The optimal working concentration for LS-B2437 was determined to be 5 ug/ml.
Uses:	IHC - Paraffin (5 µg/ml), Western blot (1:1000), Immunoprecipitation (1:300 - 1:500) (Optimal dilution to be determined by the researcher)
Size:	50 µg
Concentration:	1 mg/ml

Immunohistochemistry Image:



Anti-CXCL12 antibody IHC of human thymus. Immunohistochemistry of formalin-fixed, paraffin-embedded tissue after heat-induced antigen retrieval. Antibody LS-B2437 concentration 5 ug/ml.

Requested From:

Japan

Laboratory Reagent For In Vitro Research Use Only

Not for resale without prior written consent from LifeSpan BioSciences, Inc.

Created on 9/23/2014

© 2014 LifeSpan BioSciences