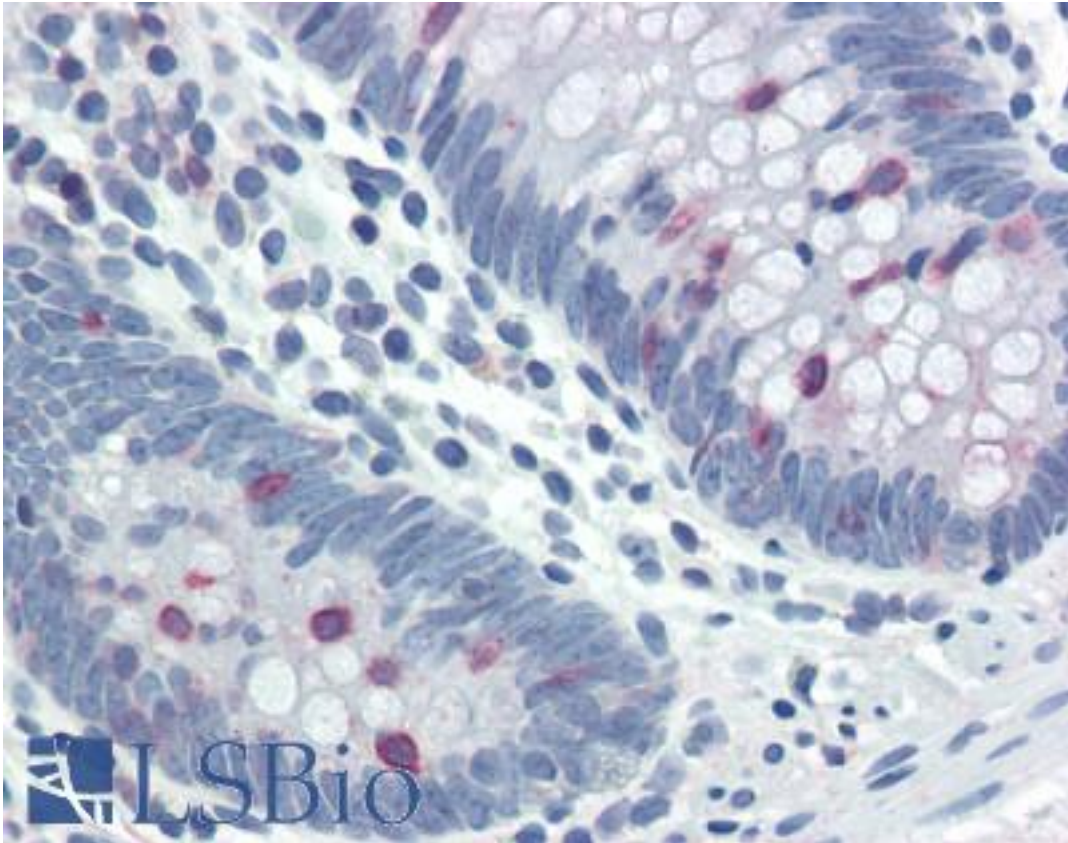


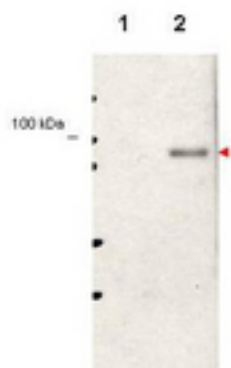
STAT5A + STAT5B Rabbit anti-Mouse Polyclonal (pTyr694) Antibody - LS-B2431 - LSBio	
<b>CatalogID:</b>	LS-B2431
<b>Validation:</b>	This antibody replaces catalog number LS-C60124. It has been validated for use in the following assays: IHC-P.
<b>Target:</b>	Signal Transducer and Activator of Transcription 5A/5B (STAT5A/STAT5B)
<b>Host</b>	Signal Transducer and Activator of Transcription 5A/5B (STAT5A/STAT5B) antibody was produced in Rabbit
<b>Clonality:</b>	Polyclonal
<b>Immunogen Species:</b>	STAT5A + STAT5B antibody was raised against Mouse
<b>Antigen Type:</b>	Synthetic peptide
<b>Immunogen:</b>	STAT5A + STAT5B antibody was raised against synthetic peptide corresponding to residues surrounding Y694 of mouse STAT5 alpha protein.
<b>Specificity:</b>	A BLAST analysis was used to suggest cross-reactivity with Stat5 alpha from human, mouse and rat based on 100% homology with the immunizing sequence. Cross-reactivity with Stat5 alpha from other sources has not been determined.
<b>Epitope:</b>	pTyr694
<b>Reactivity:</b>	Mouse, Human, Rat
<b>Purification:</b>	Immunoaffinity purified
<b>Presentation:</b>	0.02 M potassium phosphate, 0.15 M sodium chloride, pH 7.2, 0.01% sodium azide.
<b>Recommended Storage:</b>	+4°C or -20°C, Avoid repeated freezing and thawing.
<b>Usage Summary:</b>	Immunohistochemistry: LS-B2431 was validated for use in immunohistochemistry on a panel of 21 formalin-fixed, paraffin-embedded (FFPE) human tissues after heat induced antigen retrieval in pH 6.0 citrate buffer. After incubation with the primary antibody, slides were incubated with biotinylated secondary antibody, followed by alkaline phosphatase-streptavidin and chromogen. The stained slides were evaluated by a pathologist to confirm staining specificity. The optimal working concentration for LS-B2431 was determined to be 20-40 ug/ml. Western Blot: Expect a band approximately 91 kD in size corresponding to phosphorylated Stat5a protein in the appropriate cell lysate or extract. This phosphospecific polyclonal antibody reacts with mouse Stat5a pY694 and shows minimal reactivity by ELISA against the nonphosphorylated form of the immunizing peptide.
<b>Uses:</b>	IHC - Paraffin (20 - 40 µg/ml), Western blot (1:500 - 1:2000), ELISA (1:25000) (Optimal dilution to be determined by the researcher)
<b>Size:</b>	50 µg
<b>Concentration:</b>	1 mg/ml

**Immunohistochemistry Image:**



Anti-STAT5 antibody IHC of human colon. Immunohistochemistry of formalin-fixed, paraffin-embedded tissue after heat-induced antigen retrieval. Antibody LS-B2431 concentration 40 ug/ml.

**Western Blot Image:**



Anti-STAT5 pY694 Antibody - Western Blot. Western blot of affinity purified anti-Stat5 pY694 antibody shows detection of phosphorylated Stat5 (indicated by arrowhead at ~91 kD) in NK92 cells after 30 min treatment with 1Ku of IL-2 (lane 2). No reactivity is seen for non-phosphorylated Stat5 in untreated cells (lane 1). The membrane was probed with the primary antibody at a 1:1000 dilution, overnight at 4C. Personal Communication from Ana Gamero, CCR-NCI, Bethesda, MD.

**Requested From:**

Japan

Laboratory Reagent For In Vitro Research Use Only

Not for resale without prior written consent from LifeSpan BioSciences, Inc.

Created on 9/23/2014

© 2014 LifeSpan BioSciences