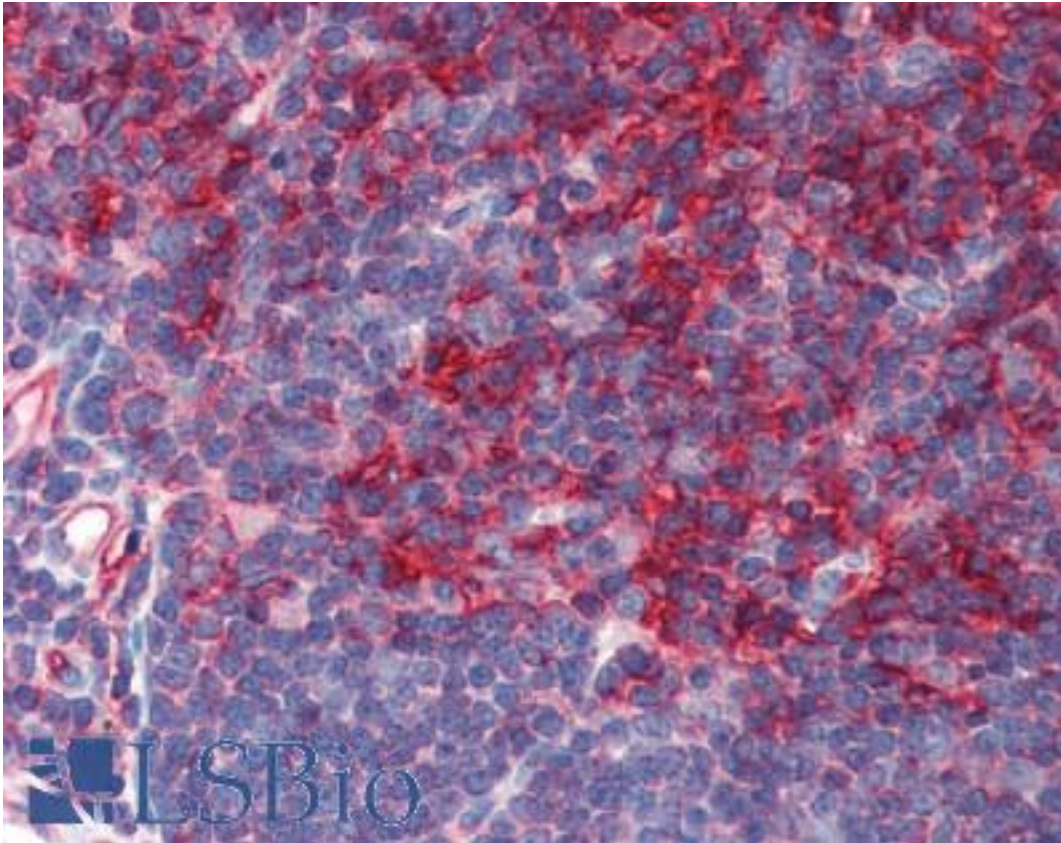


B2M / Beta 2 Microglobulin Mouse anti-Human Monoclonal Antibody - LS-B2426 - LSBio	
CatalogID:	LS-B2426
Validation:	This antibody replaces catalog number LS-C9024. It has been validated for use in the following assays: IHC-P.
Target:	beta-2-microglobulin (B2M)
Synonyms:	B2M Antibody, Beta 2 Microglobulin Antibody, Beta-2-microglobulin Antibody, Beta -2-microglobulin Antibody
Host	B2M antibody was produced in Mouse
Clonality:	Monoclonal
Isotype:	IgG2a
Immunogen Species:	B2M / Beta 2 Microglobulin antibody was raised against Human
Antigen Type:	Purified protein
Immunogen:	B2M / Beta 2 Microglobulin antibody was raised against purified human b2-microglobulin.
Specificity:	Recognizes human b2-microglobulin associated with cell-surface MHC Class I molecules and other membrane antigens as well as soluble human b2-microglobulin. Does not cross-react with mouse, bovine, rabbit, dog or chicken b2-microglobulin.
Reactivity:	Human
Purification:	Ion exchange chromatography
Presentation:	PBS, pH 7.4, 15 mM sodium azide
Recommended Storage:	Long term: -20°C; Short term: +4°C. Avoid repeat freeze-thaw cycles.
Usage Summary:	Immunohistochemistry: LS-B2426 was validated for use in immunohistochemistry on a panel of 21 formalin-fixed, paraffin-embedded (FFPE) human tissues after heat induced antigen retrieval in pH 6.0 citrate buffer. After incubation with the primary antibody, slides were incubated with biotinylated secondary antibody, followed by alkaline phosphatase-streptavidin and chromogen. The stained slides were evaluated by a pathologist to confirm staining specificity. The optimal working concentration for LS-B2426 was determined to be 10 ug/ml.
Uses:	IHC - Paraffin (10 µg/ml), Western blot (2 - 4 µg/ml), Immunoprecipitation, Flow Cytometry (1 µg/ml), ELISA (Optimal dilution to be determined by the researcher)
Size:	50 µg
Concentration:	1 mg/ml

Immunohistochemistry Image:



Anti-B2M antibody IHC of human thymus. Immunohistochemistry of formalin-fixed, paraffin-embedded tissue after heat-induced antigen retrieval. Antibody LS-B2426 concentration 10 ug/ml.

Requested From:

Japan

Laboratory Reagent For In Vitro Research Use Only

Not for resale without prior written consent from LifeSpan BioSciences, Inc.

Created on 9/23/2014

© 2014 LifeSpan BioSciences