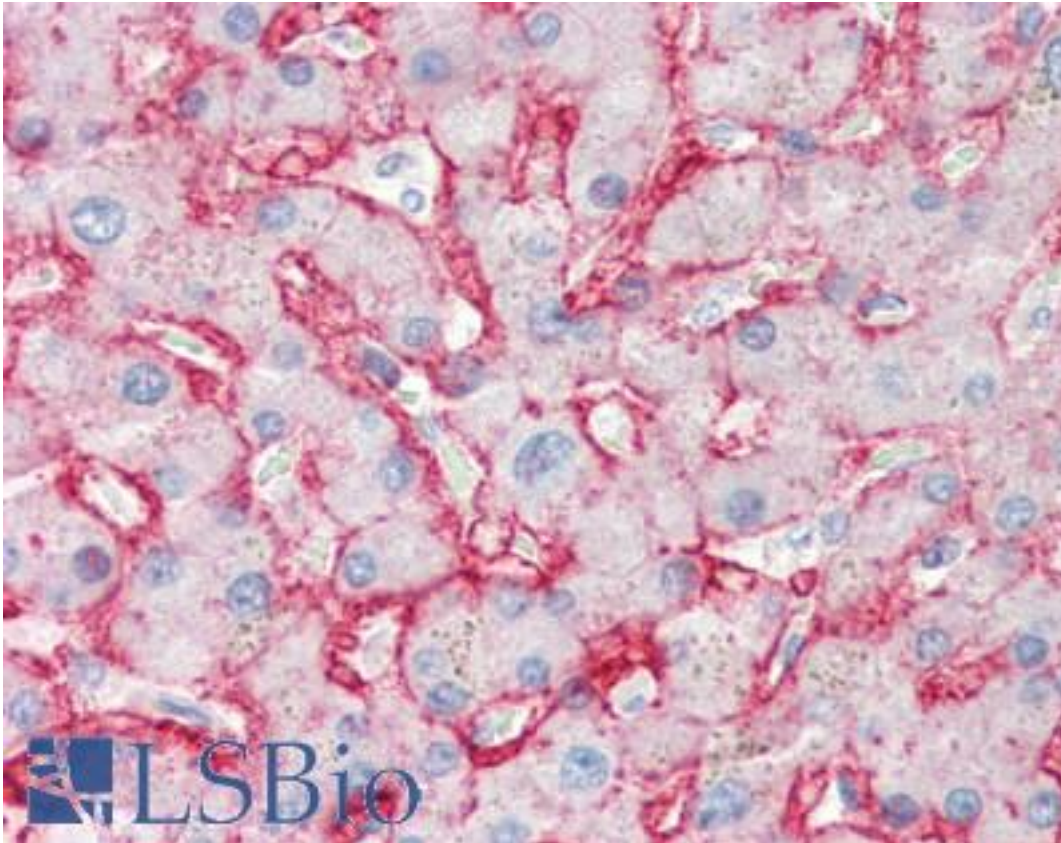


SLC2A2 / GLUT2 Mouse anti-Human Monoclonal Antibody - LS-B2421 - LSBio

CatalogID:	LS-B2421
Validation:	This antibody replaces catalog number LS-C15395. It has been validated for use in the following assays: IHC-P.
Target:	solute carrier family 2 (facilitated glucose transporter), member 2 (SLC2A2)
Synonyms:	SLC2A2 Antibody, GLUT-2 Antibody, GLUT2 Antibody, Glucose transporter 2 Antibody
Family / Subfamily:	Transporter / Sugar transporter
Host	SLC2A2 antibody was produced in Mouse
Clonality:	Monoclonal
Isotype:	IgG2a
Immunogen Species:	SLC2A2 / GLUT2 antibody was raised against Human
Antigen Type:	Cells
Immunogen:	SLC2A2 / GLUT2 antibody was raised against human Glut2-transfected NS0 cells.
Specificity:	Recognizes human GLUT 2 (Glucose Transporter, Insulin Regulatable) expression on hGlut2-transfected NS0 cells but not on control transfectants. Detects Glut2 on the surface of the human intestinal cell line Caco2 in flow cytometry and on fixed cells in immunocytochemistry tests. Based on flow cytometric tests on transfected cells, this antibody has no cross-reactivity with hGlut1 or hGlut3.
Reactivity:	Human
Purification:	Protein G purified
Presentation:	PBS, 5% Trehalose. Sourced in TCS.
Recommended Storage:	Long term: -20°C; Short term: +4°C; Avoid freeze-thaw cycles.
Usage Summary:	Immunohistochemistry: LS-B2421 was validated for use in immunohistochemistry on a panel of 21 formalin-fixed, paraffin-embedded (FFPE) human tissues after heat induced antigen retrieval in pH 6.0 citrate buffer. After incubation with the primary antibody, slides were incubated with biotinylated secondary antibody, followed by alkaline phosphatase-streptavidin and chromogen. The stained slides were evaluated by a pathologist to confirm staining specificity. The optimal working concentration for LS-B2421 was determined to be 10 ug/ml.
Uses:	IHC - Paraffin (10 µg/ml), ICC (10 µg/ml), Flow Cytometry (Optimal dilution to be determined by the researcher)
Size:	50 µg
Concentration:	0.5 mg/ml

Immunohistochemistry Image:



Anti-GLUT2 antibody IHC of human liver. Immunohistochemistry of formalin-fixed, paraffin-embedded tissue after heat-induced antigen retrieval. Antibody LS-B2421 concentration 10 ug/ml.

Requested From:

Japan

Laboratory Reagent For In Vitro Research Use Only

Not for resale without prior written consent from LifeSpan BioSciences, Inc.

Created on 9/23/2014

© 2014 LifeSpan BioSciences