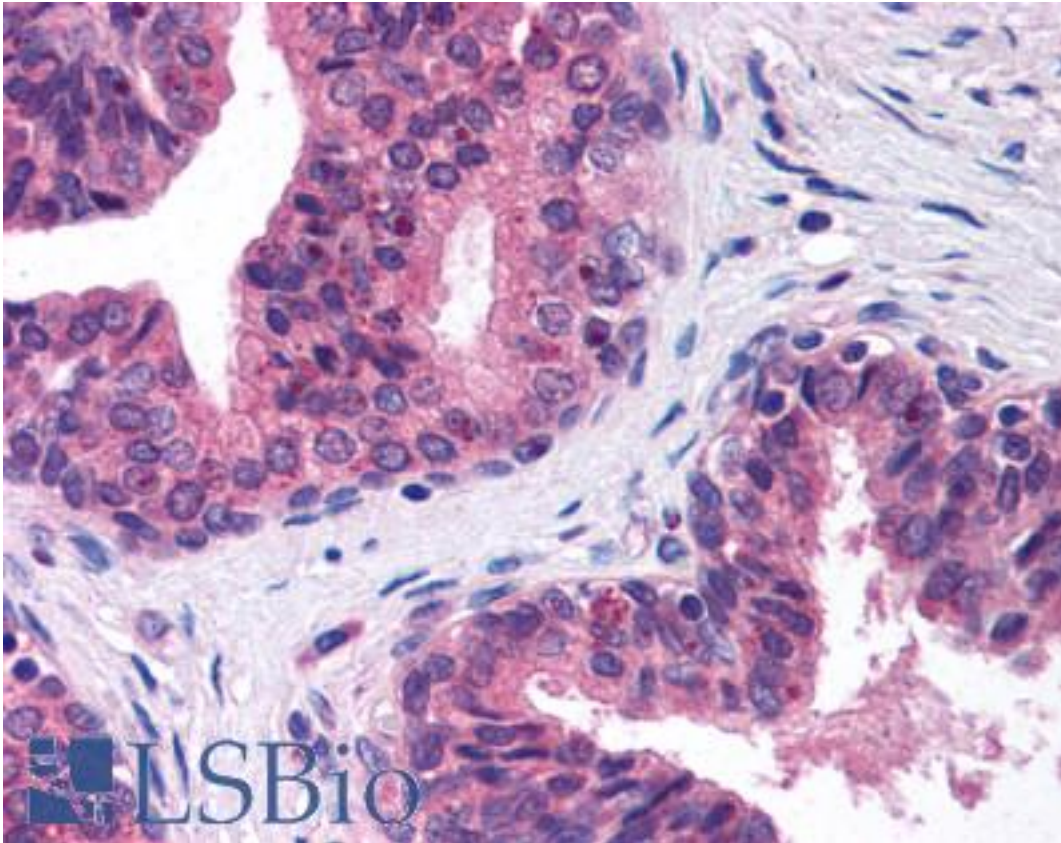


CHAF1A / CAF-1 Mouse anti-Human Monoclonal (SS 1 1-13) Antibody - LS-B242 - LSBio	
<b>CatalogID:</b>	LS-B242
<b>Validation:</b>	This antibody replaces catalog number LS-C2625. It has been validated for use in the following assays: IHC.
<b>Target:</b>	chromatin assembly factor 1, subunit A (p150) (CHAF1A)
<b>Synonyms:</b>	CHAF1A Antibody, CAF-I p150 Antibody, CAF1P150 Antibody, CAF-1 subunit A Antibody, CAF-1 Antibody, Hp150 Antibody, p150 Antibody, CAF Antibody, CAF-I 150 kDa subunit Antibody, CAF1 Antibody, CAF1B Antibody
<b>Host</b>	CHAF1A antibody was produced in Mouse
<b>Clonality:</b>	Monoclonal
<b>Isotype:</b>	IgG1
<b>Clone Name:</b>	SS 1 1-13
<b>Immunogen Species:</b>	CHAF1A / CAF-1 antibody was raised against Human
<b>Antigen Type:</b>	Recombinant protein
<b>Immunogen:</b>	CHAF1A / CAF-1 antibody was raised against recombinant human CAF-1p150
<b>Specificity:</b>	Specific for CAF-1p150.
<b>Reactivity:</b>	Human
<b>Purification:</b>	Ascites
<b>Presentation:</b>	Ascites, 0.1% sodium azide.
<b>Recommended Storage:</b>	+4°C or -20°C, Avoid repeated freezing and thawing.
<b>Usage Summary:</b>	Immunohistochemistry: LS-B242 was validated for use in immunohistochemistry on a panel of 21 formalin-fixed, paraffin-embedded (FFPE) human tissues after heat induced antigen retrieval in pH 6.0 citrate buffer. After incubation with the primary antibody, slides were incubated with biotinylated secondary antibody, followed by alkaline phosphatase-streptavidin and chromogen. The stained slides were evaluated by a pathologist to confirm staining specificity. The optimal working concentration for LS-B242 was determined to be 1:50.
<b>Uses:</b>	IHC - Paraffin (1:50), Western blot (1:500 - 1:1000), Immunoprecipitation (Optimal dilution to be determined by the researcher)
<b>Size:</b>	50 µl

**Immunohistochemistry Image:**



Anti-CHAF1A antibody IHC of human prostate. Immunohistochemistry of formalin-fixed, paraffin-embedded tissue after heat-induced antigen retrieval. Antibody LS-B242 dilution 1:50.

**Requested From:**

Japan

Laboratory Reagent For In Vitro Research Use Only

Not for resale without prior written consent from LifeSpan BioSciences, Inc.

Created on 9/23/2014

© 2014 LifeSpan BioSciences