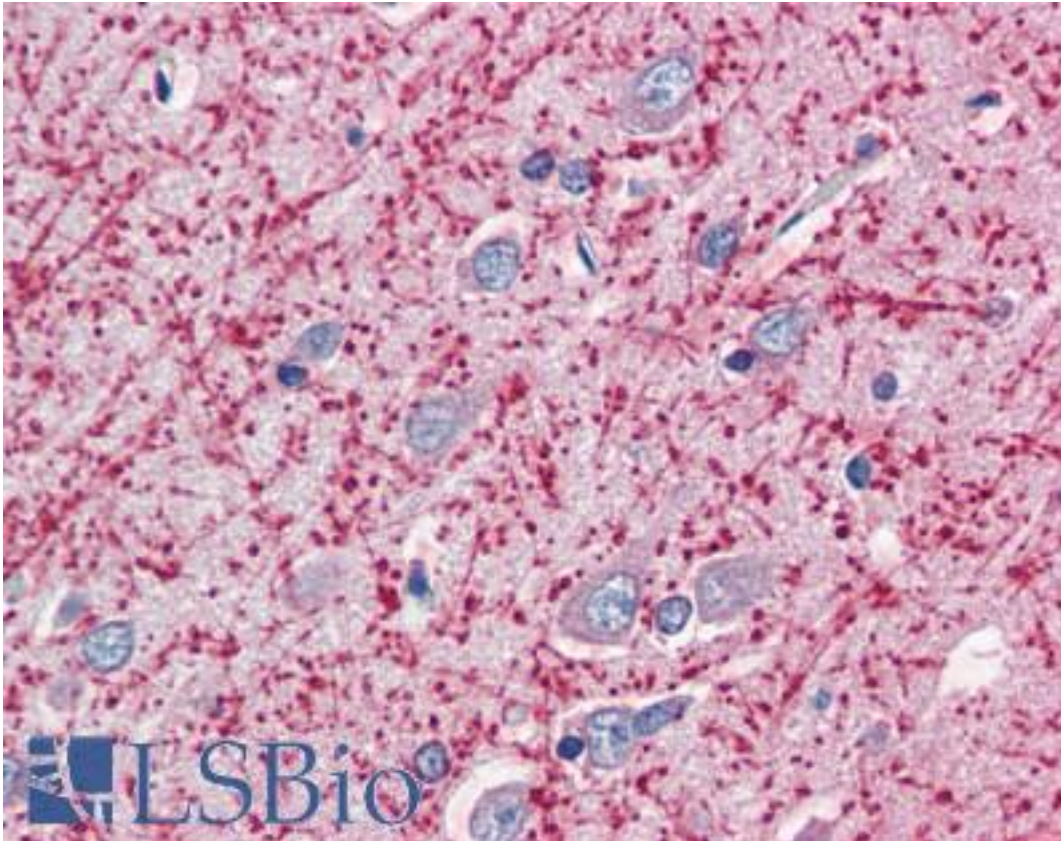


MOG Goat anti-Human Polyclonal (C-Terminus) Antibody - LS-B2419 - LSBio	
<b>CatalogID:</b>	LS-B2419
<b>Validation:</b>	This antibody replaces catalog number LS-C55112. It has been validated for use in the following assays: IHC-P.
<b>Target:</b>	myelin oligodendrocyte glycoprotein (MOG)
<b>Synonyms:</b>	MOG Antibody, NRCLP7 Antibody, MOGIG2 Antibody, MOG alpha-5 Antibody, MOG Ig-AluB Antibody
<b>Family / Subfamily:</b>	Immunoglobulin / not assigned-Immunoglobulin
<b>Host</b>	MOG antibody was produced in Goat
<b>Clonality:</b>	Polyclonal
<b>Immunogen Species:</b>	MOG antibody was raised against Human
<b>Antigen Type:</b>	Synthetic peptide
<b>Immunogen:</b>	MOG antibody was raised against synthetic peptide C-AGQFLEELRNPF from the C-terminus of human MOG (NP_996532.2; NP_996535.2; NP_001008229.1). Percent identity by BLAST analysis: Human, Gorilla, Orangutan, Monkey, Marmoset, Mouse, Rat, Dog, Bovine, Horse, Rabbit, Pig (100%).
<b>Specificity:</b>	Human MOG. This antibody is expected to recognise NP_996532.2 (isf a1), NP_996535.2 (isf a2) and NP_001008229.1 (isf a3)
<b>Epitope:</b>	C-Terminus
<b>Reactivity:</b>	Human, Gorilla, Orangutan, Monkey, Mouse, Rat, Bovine, Dog, Horse, Pig, Rabbit
<b>Purification:</b>	Immunoaffinity purified
<b>Presentation:</b>	Tris-buffered saline, pH 7.3, 0.5% BSA, 0.02% sodium azide
<b>Recommended Storage:</b>	Store at -20°C. Minimize freezing and thawing.
<b>Usage Summary:</b>	Immunohistochemistry: LS-B2419 was validated for use in immunohistochemistry on a panel of 21 formalin-fixed, paraffin-embedded (FFPE) human tissues after heat induced antigen retrieval in pH 6.0 citrate buffer. After incubation with the primary antibody, slides were incubated with biotinylated secondary antibody, followed by alkaline phosphatase-streptavidin and chromogen. The stained slides were evaluated by a pathologist to confirm staining specificity. The optimal working concentration for LS-B2419 was determined to be 5 ug/ml.
<b>Uses:</b>	IHC - Paraffin (5 µg/ml), Western blot (0.03 - 1 µg/ml), ELISA (1:16000) (Optimal dilution to be determined by the researcher)
<b>Size:</b>	50 µg
<b>Concentration:</b>	0.5 mg/ml

**Immunohistochemistry Image:**



Anti-MOG antibody IHC of human brain, cortex. Immunohistochemistry of formalin-fixed, paraffin-embedded tissue after heat-induced antigen retrieval. Antibody LS-B2419 concentration 5 ug/ml.

**Western Blot Image:**



Antibody staining (0.03 ug/ml) of Human Brain lysate (RIPA buffer, 30 ug total protein per lane). Primary incubated for 1 hour. Detected by Western blot of chemiluminescence.

<b>Requested From:</b>	Japan
Laboratory Reagent For In Vitro Research Use Only	
Not for resale without prior written consent from LifeSpan BioSciences, Inc.	
Created on 9/23/2014	
© 2014 LifeSpan BioSciences	