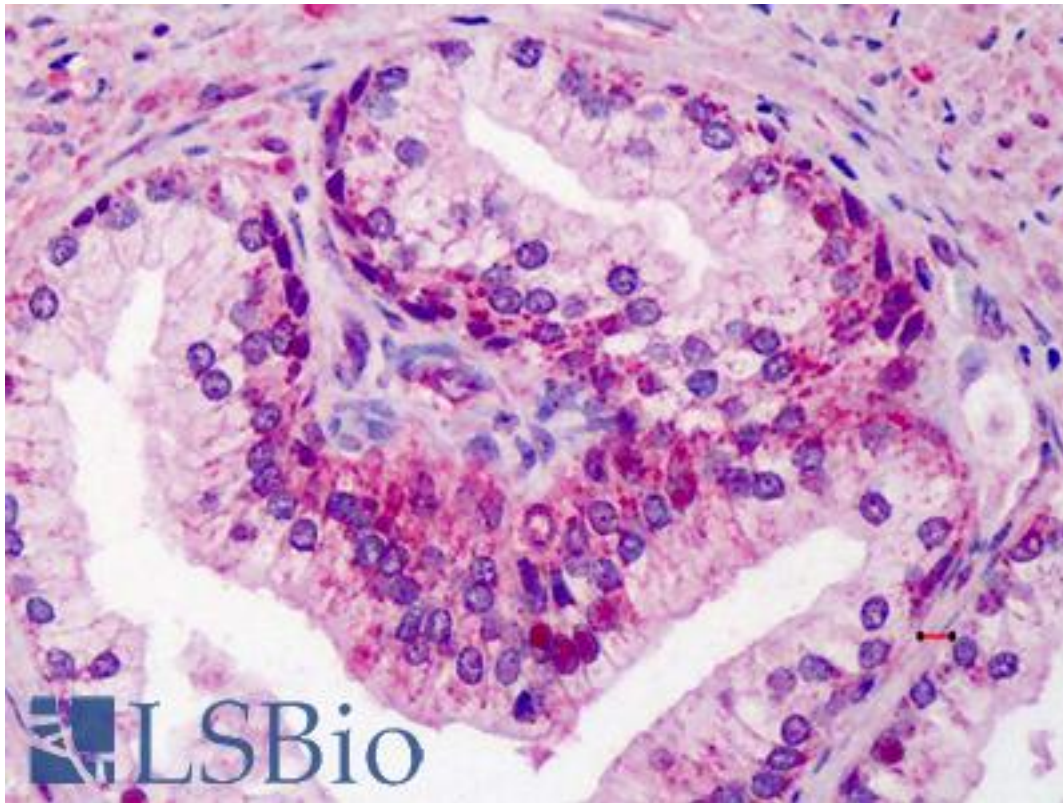


GDF15 Goat anti-Human Polyclonal (C-Terminus) Antibody - LS-B2413 - LSBio

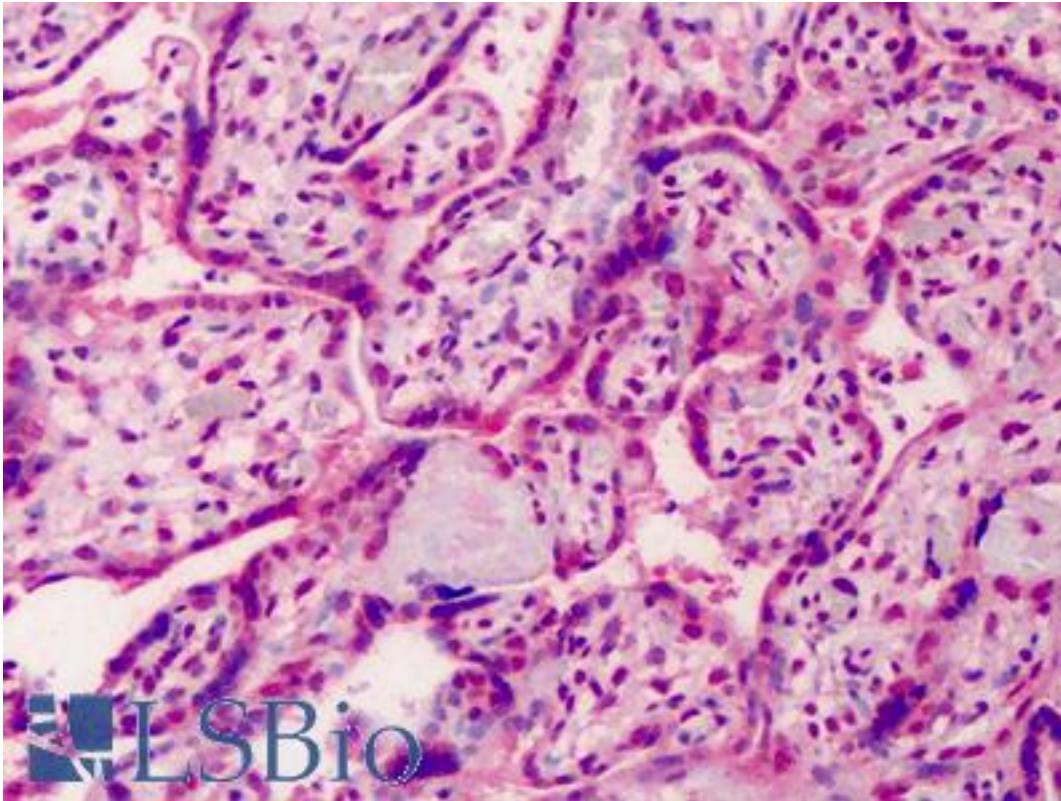
CatalogID:	LS-B2413
Validation:	This antibody replaces catalog number LS-C54905. It has been validated for use in the following assays: IHC-P.
Target:	growth differentiation factor 15 (GDF15)
Synonyms:	GDF15 Antibody, MIC1 Antibody, MIC-1 Antibody, NAG-1 Antibody, NRG-1 Antibody, NSAID-regulated gene 1 protein Antibody, PLAB Antibody, NSAID-activated gene 1 protein Antibody, Placental TGF-beta Antibody, PTGFB Antibody, GDF-15 Antibody, PTGF-beta Antibody
Family / Subfamily:	TGF beta / not assigned-TGF beta
Host	GDF15 antibody was produced in Goat
Clonality:	Polyclonal
Immunogen Species:	GDF15 antibody was raised against Human
Antigen Type:	Synthetic peptide
Immunogen:	GDF15 antibody was raised against synthetic peptide C-QKTDGTVSLQTYDD from the C-terminus of human GDF15 (NP_004855.2). Percent identity by BLAST analysis: Human, Gorilla, Gibbon, Monkey (100%); Marmoset (93%).
Specificity:	Human GDF15.
Epitope:	C-Terminus
Reactivity:	Human, Gorilla, Gibbon
Predicted Reactivity:	Monkey
Purification:	Immunoaffinity purified
Presentation:	Tris-buffered saline, pH 7.3, 0.5% BSA, 0.02% sodium azide
Recommended Storage:	Store at -20°C. Minimize freezing and thawing.
Usage Summary:	Immunohistochemistry: LS-B2413 was validated for use in immunohistochemistry on a panel of 21 formalin-fixed, paraffin-embedded (FFPE) human tissues after heat induced antigen retrieval in pH 6.0 citrate buffer. After incubation with the primary antibody, slides were incubated with biotinylated secondary antibody, followed by alkaline phosphatase-streptavidin and chromogen. The stained slides were evaluated by a pathologist to confirm staining specificity. The optimal working concentration for LS-B2413 was determined to be 5 ug/ml.
Uses:	IHC - Paraffin (5 µg/ml), Western blot (0.1 - 0.3 µg/ml), ELISA (1:2000) (Optimal dilution to be determined by the researcher)
Size:	50 µg
Concentration:	0.5 mg/ml

Immunohistochemistry Image:



Anti-GDF15 antibody IHC of human prostate. Immunohistochemistry of formalin-fixed, paraffin-embedded tissue after heat-induced antigen retrieval. Antibody LS-B2413 concentration 5 ug/ml.

Immunohistochemistry Image:



Anti-GDF15 antibody IHC of human placenta. Immunohistochemistry of formalin-fixed, paraffin-embedded tissue after heat-induced antigen retrieval. Antibody LS-B2413 concentration 5 ug/ml.

Western Blot Image:



Antibody (0.1 ug/ml) staining of Human Prostate lysate (35 ug protein in RIPA buffer). Primary incubation was 1 hour. Detected by chemiluminescence.

Requested From:

Japan

Laboratory Reagent For In Vitro Research Use Only

Not for resale without prior written consent from LifeSpan BioSciences, Inc.

Created on 9/23/2014

© 2014 LifeSpan BioSciences