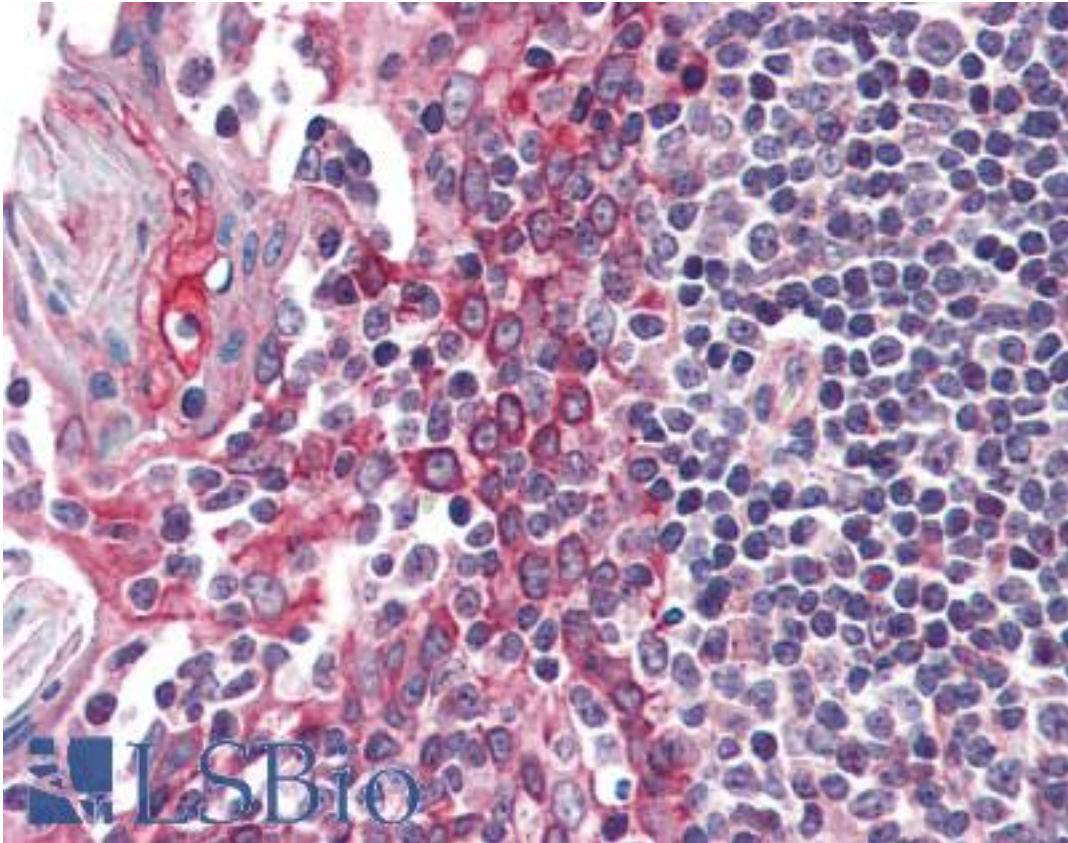


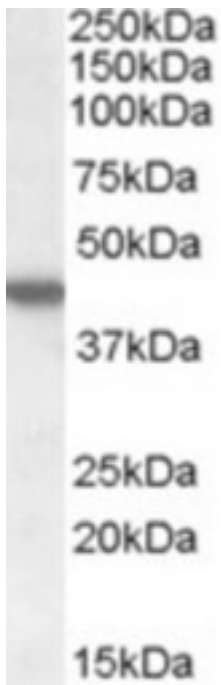
CSNK1E / CK1 Epsilon Goat anti-Human Polyclonal (C-Terminus) Antibody - LS-B2412 - LSBio	
CatalogID:	LS-B2412
Validation:	This antibody replaces catalog number LS-C54685. It has been validated for use in the following assays: IHC-P.
Target:	casein kinase 1, epsilon (CSNK1E)
Synonyms:	CSNK1E Antibody, Casein kinase 1 epsilon Antibody, Casein kinase i epsilon Antibody, CK1 epsilon Antibody, CKIE Antibody, CKIepsilon Antibody, CKI-epsilon Antibody, HCKIE Antibody, Casein kinase 1, epsilon Antibody
Family / Subfamily:	Protein Kinase / Casein kinase I
Host	CSNK1E antibody was produced in Goat
Clonality:	Polyclonal
Immunogen Species:	CSNK1E / CK1 Epsilon antibody was raised against Human
Antigen Type:	Synthetic peptide
Immunogen:	CSNK1E / CK1 Epsilon antibody was raised against synthetic peptide C-PASQTSVPFDHLGK from the C-terminus of human CSNK1E (NP_001885.1; NP_689407.1). Percent identity by BLAST analysis: Human, Gorilla, Gibbon, Monkey (100%); Marmoset, Mouse, Rat, Elephant, Dog, Bat, Horse, Pig, Turkey, Chicken, Platypus (93%); Xenopus (86%).
Specificity:	Human CSNK1E. Both reported variants represent identical protein (NP_001885.1 and NP_689407.1).
Epitope:	C-Terminus
Reactivity:	Human, Gorilla, Gibbon
Predicted Reactivity:	Monkey, Mouse, Rat, Bat, Dog, Horse, Pig, Chicken
Purification:	Immunoaffinity purified
Presentation:	Tris-buffered saline, pH 7.3, 0.5% BSA, 0.02% sodium azide
Recommended Storage:	Store at -20°C. Minimize freezing and thawing.
Usage Summary:	Immunohistochemistry: LS-B2412 was validated for use in immunohistochemistry on a panel of 21 formalin-fixed, paraffin-embedded (FFPE) human tissues after heat induced antigen retrieval in pH 6.0 citrate buffer. After incubation with the primary antibody, slides were incubated with biotinylated secondary antibody, followed by alkaline phosphatase-streptavidin and chromogen. The stained slides were evaluated by a pathologist to confirm staining specificity. The optimal working concentration for LS-B2412 was determined to be 5 ug/ml.
Uses:	IHC - Paraffin (5 µg/ml), Western blot (0.3 - 1 µg/ml), ELISA (1:32000) (Optimal dilution to be determined by the researcher)
Size:	50 µg
Concentration:	0.5 mg/ml

Immunohistochemistry Image:



Anti-CSNK1E antibody IHC of human tonsil. Immunohistochemistry of formalin-fixed, paraffin-embedded tissue after heat-induced antigen retrieval. Antibody LS-B2412 concentration 5 ug/ml.

Western Blot Image:



Antibody (1 ug/ml) staining of HEK293 cell lysate (35 ug protein in RIPA buffer). Primary incubation was 1 hour. Detected by chemiluminescence.

Requested From:

Japan

Laboratory Reagent For In Vitro Research Use Only

Not for resale without prior written consent from LifeSpan BioSciences, Inc.

Created on 9/23/2014

© 2014 LifeSpan BioSciences