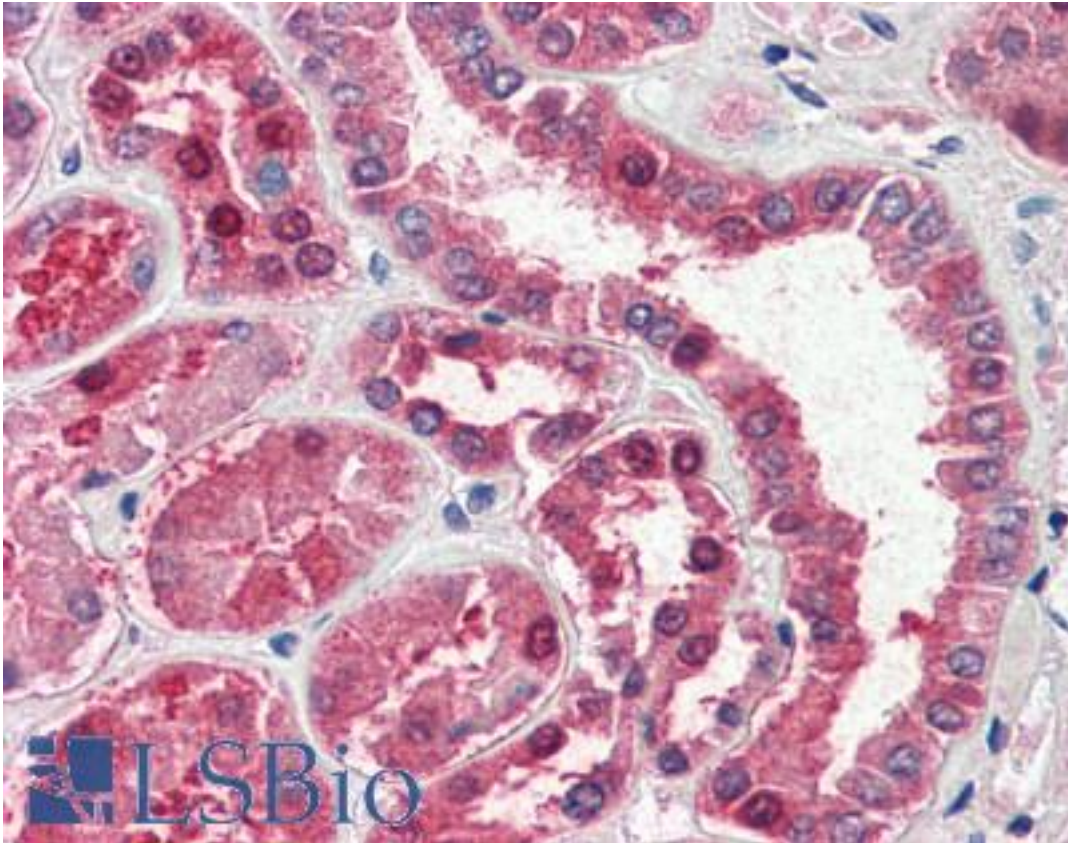


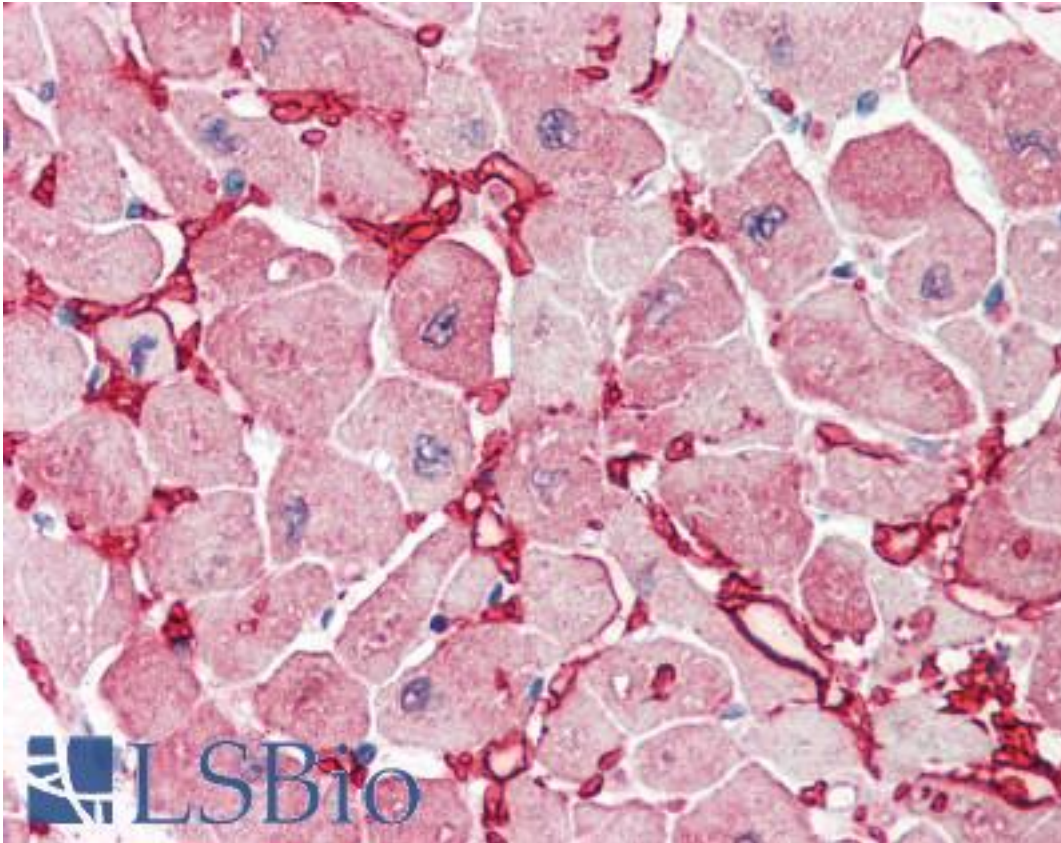
Aspartate Aminotransferase Goat anti-Human Polyclonal (aa157-167) Antibody - LS-B2405 - LSBio	
CatalogID:	LS-B2405
Validation:	This antibody replaces catalog number LS-C54927. It has been validated for use in the following assays: IHC-P.
Target:	glutamic-oxaloacetic transaminase 1, soluble (GOT1)
Synonyms:	GOT1 Antibody, Aspartate Aminotransferase Antibody, ASTQTL1 Antibody, Growth-inhibiting protein 18 Antibody, Transaminase A Antibody, GIG18 Antibody
Host	GOT1 antibody was produced in Goat
Clonality:	Polyclonal
Immunogen Species:	Aspartate Aminotransferase antibody was raised against Human
Antigen Type:	Synthetic peptide
Immunogen:	Aspartate Aminotransferase antibody was raised against synthetic peptide C-RSYRYWDAEKR from an internal region of human GOT1 (NP_002070.1). Percent identity by BLAST analysis: Human, Chimpanzee, Gorilla, Orangutan, Gibbon, Monkey, Rat, Hamster, Elephant (100%); Marmoset, Goat, Pig, Lizard (91%); Mouse, Panda, Bat, Bovine, Horse, Opossum, Turkey, Chicken, Platypus, Xenopus, Salmon, Pufferfish, Seq squirt (82%).
Specificity:	Human GOT1.
Epitope:	aa157-167
Reactivity:	Human, Chimpanzee, Gorilla, Orangutan, Gibbon, Rat, Hamster
Predicted Reactivity:	Monkey, Goat, Pig
Purification:	Immunoaffinity purified
Presentation:	Tris-buffered saline, pH 7.3, 0.5% BSA, 0.02% sodium azide
Recommended Storage:	Store at -20°C. Minimize freezing and thawing.
Usage Summary:	Immunohistochemistry: LS-B2405 was validated for use in immunohistochemistry on a panel of 21 formalin-fixed, paraffin-embedded (FFPE) human tissues after heat induced antigen retrieval in pH 6.0 citrate buffer. After incubation with the primary antibody, slides were incubated with biotinylated secondary antibody, followed by alkaline phosphatase-streptavidin and chromogen. The stained slides were evaluated by a pathologist to confirm staining specificity. The optimal working concentration for LS-B2405 was determined to be 2.5-5 ug/ml.
Uses:	IHC - Paraffin (2.5 - 5 µg/ml), Western blot (0.01 - 0.1 µg/ml), ELISA (1:4000) (Optimal dilution to be determined by the researcher)
Size:	50 µg
Concentration:	0.5 mg/ml

Immunohistochemistry Image:



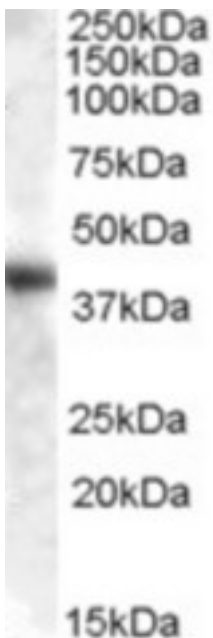
Anti-GOT1 antibody IHC of human kidney. Immunohistochemistry of formalin-fixed, paraffin-embedded tissue after heat-induced antigen retrieval. Antibody LS-B2405 concentration 5 ug/ml.

Immunohistochemistry Image:



Anti-GOT1 antibody IHC of human heart. Immunohistochemistry of formalin-fixed, paraffin-embedded tissue after heat-induced antigen retrieval. Antibody LS-B2405 concentration 5 ug/ml.

Western Blot Image:



Antibody (0.01 ug/ml) staining of Human Liver lysate (35 ug protein in RIPA buffer). Primary incubation was 1 hour. Detected by chemiluminescence.

Requested From:	Japan
Laboratory Reagent For In Vitro Research Use Only	
Not for resale without prior written consent from LifeSpan BioSciences, Inc.	
Created on 9/23/2014	
© 2014 LifeSpan BioSciences	