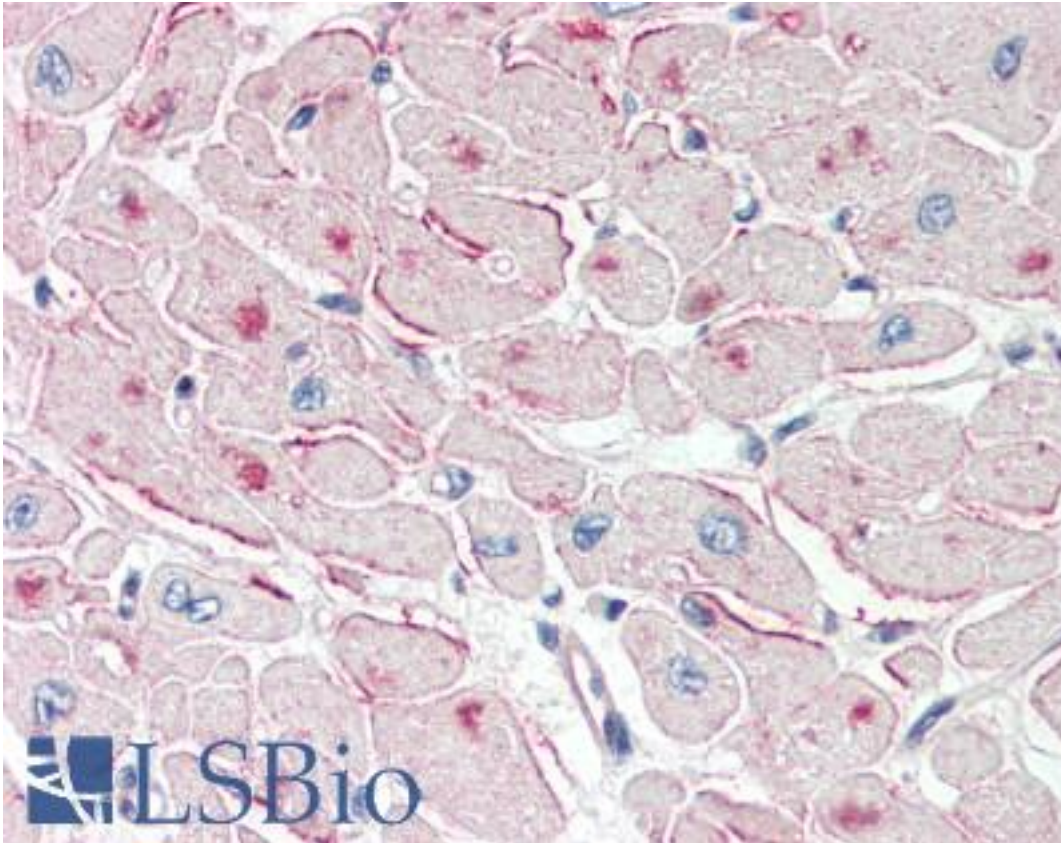


PNPLA2 / ATGL Goat anti-Human Polyclonal (Internal) Antibody - LS-B2404 - LSBio	
<b>CatalogID:</b>	LS-B2404
<b>Validation:</b>	This antibody replaces catalog number LS-C54554. It has been validated for use in the following assays: IHC-P.
<b>Target:</b>	patatin-like phospholipase domain containing 2 (PNPLA2)
<b>Synonyms:</b>	PNPLA2 Antibody, Adipose triglyceride lipase Antibody, ATGL Antibody, IPLA2zeta Antibody, PEDF-R Antibody, IPLA2-zeta Antibody, Triglyceride hydrolase Antibody, TTS-2.2 Antibody, TTS2 Antibody, Transport-secretion protein 2 Antibody, TTS2.2 Antibody, Desnutrin Antibody, FP17548 Antibody
<b>Host</b>	PNPLA2 antibody was produced in Goat
<b>Clonality:</b>	Polyclonal
<b>Immunogen Species:</b>	PNPLA2 / ATGL antibody was raised against Human
<b>Antigen Type:</b>	Synthetic peptide
<b>Immunogen:</b>	PNPLA2 / ATGL antibody was raised against synthetic peptide C-NIIEVSKEARKR from an internal region of mouse PNPLA2 / ATGL (NP_065109.1). Percent identity by BLAST analysis: Marmoset, Mouse, Rat, Goat, Hamster, Panda, Bovine, Horse (100%); Dog, Pig, Lizard, Xenopus (92%); Human, Gorilla, Gibbon, Monkey, Elephant, Zebra finch, Chicken, Stickleback, Zebrafish (83%).
<b>Specificity:</b>	Mouse PNPLA2 / ATGL. Please note this antibody was designed using the Mouse sequence NP_080078.1, which differs by 2 amino acids from the Human sequence NP_065109.1.
<b>Epitope:</b>	Internal
<b>Reactivity:</b>	Human, Monkey, Mouse, Rat, Bovine, Goat, Hamster, Horse
<b>Predicted Reactivity:</b>	Dog, Pig, Xenopus
<b>Purification:</b>	Immunoaffinity purified
<b>Presentation:</b>	Tris-buffered saline, pH 7.3, 0.5% BSA, 0.02% sodium azide
<b>Recommended Storage:</b>	Store at -20°C. Minimize freezing and thawing.
<b>Usage Summary:</b>	Immunohistochemistry: LS-B2404 was validated for use in immunohistochemistry on a panel of 21 formalin-fixed, paraffin-embedded (FFPE) human tissues after heat induced antigen retrieval in pH 6.0 citrate buffer. After incubation with the primary antibody, slides were incubated with biotinylated secondary antibody, followed by alkaline phosphatase-streptavidin and chromogen. The stained slides were evaluated by a pathologist to confirm staining specificity. The optimal working concentration for LS-B2404 was determined to be 2.5 ug/ml.
<b>Uses:</b>	IHC - Paraffin (2.5 µg/ml), ELISA (1:32000) (Optimal dilution to be determined by the researcher)
<b>Size:</b>	50 µg
<b>Concentration:</b>	0.5 mg/ml

**Immunohistochemistry Image:**



Anti-PNPLA2 / ATGL antibody IHC of human heart. Immunohistochemistry of formalin-fixed, paraffin-embedded tissue after heat-induced antigen retrieval. Antibody LS-B2404 concentration 5 ug/ml.

**Requested From:**

Japan

Laboratory Reagent For In Vitro Research Use Only

Not for resale without prior written consent from LifeSpan BioSciences, Inc.

Created on 9/23/2014

© 2014 LifeSpan BioSciences