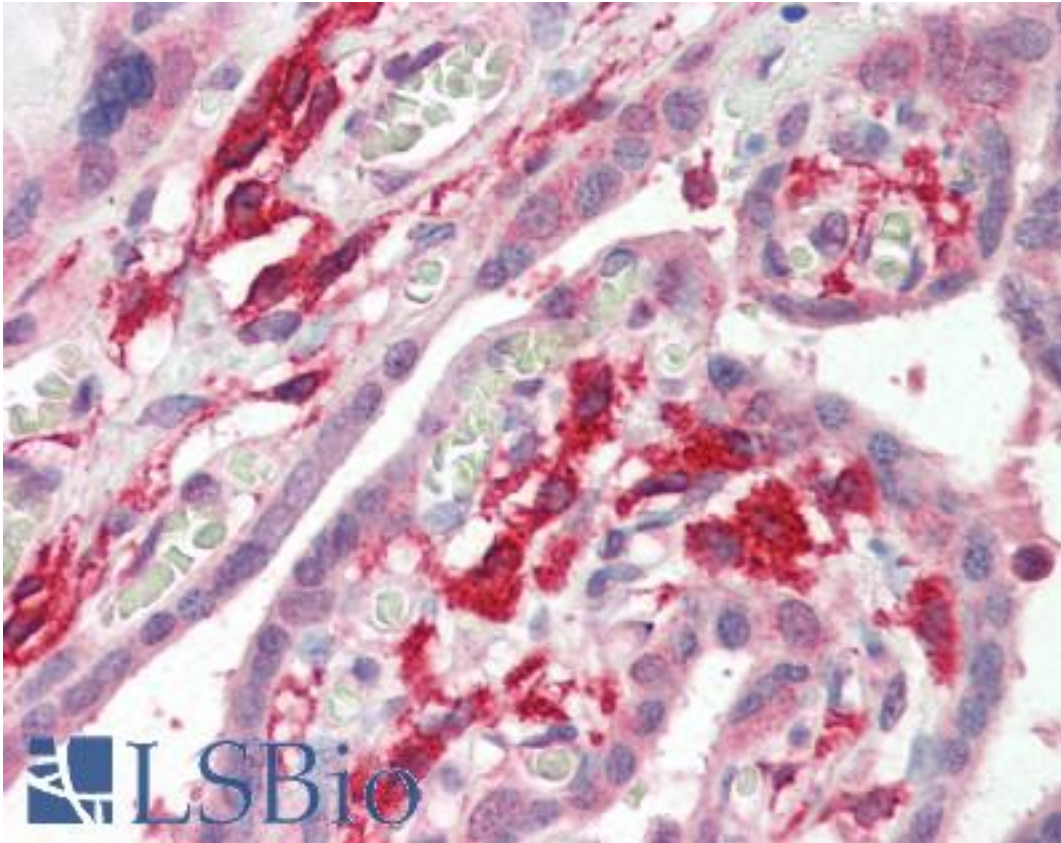


AIF1 / IBA1 Goat anti-Human Polyclonal (C-Terminus) Antibody - LS-B2403 - LSBio

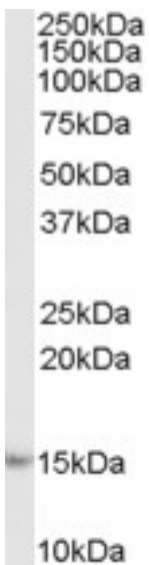
CatalogID:	LS-B2403
Validation:	This antibody replaces catalog number LS-C54465. It has been validated for use in the following assays: IHC-P.
Target:	allograft inflammatory factor 1 (AIF1)
Synonyms:	AIF1 Antibody, AIF-1 Antibody, Em:AF129756.17 Antibody, G1 Antibody, IRT-1 Antibody, Protein G1 Antibody, IBA1 Antibody, IRT1 Antibody
Host	AIF1 antibody was produced in Goat
Clonality:	Polyclonal
Immunogen Species:	AIF1 / IBA1 antibody was raised against Human
Antigen Type:	Synthetic peptide
Immunogen:	AIF1 / IBA1 antibody was raised against synthetic peptide C-YEEKAREKEKP from the C-terminus of human AIF1 / IBA1 (NP_116573.1; NP_001614.3). Percent identity by BLAST analysis: Human, Gorilla, Gibbon, Monkey (100%); Marmoset, Elephant, Panda, Dog, Bat, Bovine, Horse, Rabbit, Pig (91%); Goat, Platypus, Slime mold, Spikemoss, Chaetomium (82%).
Specificity:	Human AIF1 / IBA1. This antibody is expected to recognise isoform 1 (NP_116573.1) and isoform 3 (NP_001614.3).
Epitope:	C-Terminus
Reactivity:	Human, Gorilla, Gibbon
Predicted Reactivity:	Monkey, Bat, Bovine, Dog, Horse, Pig, Rabbit
Purification:	Immunoaffinity purified
Presentation:	Tris-buffered saline, pH 7.3, 0.5% BSA, 0.02% sodium azide
Recommended Storage:	Store at -20°C. Minimize freezing and thawing.
Usage Summary:	Immunohistochemistry: LS-B2403 was validated for use in immunohistochemistry on a panel of 21 formalin-fixed, paraffin-embedded (FFPE) human tissues after heat induced antigen retrieval in pH 6.0 citrate buffer. After incubation with the primary antibody, slides were incubated with biotinylated secondary antibody, followed by alkaline phosphatase-streptavidin and chromogen. The stained slides were evaluated by a pathologist to confirm staining specificity. The optimal working concentration for LS-B2403 was determined to be 2.5 ug/ml.
Uses:	IHC - Paraffin (2.5 µg/ml), Western blot (1:16000) & (1 - 3 µg/ml), ELISA (1:16000) (Optimal dilution to be determined by the researcher)
Size:	50 µg
Concentration:	0.5 mg/ml

Immunohistochemistry Image:



Anti-AIF1 / IBA1 antibody IHC of human placenta. Immunohistochemistry of formalin-fixed, paraffin-embedded tissue after heat-induced antigen retrieval. Antibody LS-B2403 concentration 5 ug/ml.

Western Blot Image:



Antibody (1 ug/ml) staining of Human Lymph Node lysate (35 ug protein in RIPA buffer). Primary incubation was 1 hour. Detected by chemiluminescence.

Requested From:

Japan

Laboratory Reagent For In Vitro Research Use Only

Not for resale without prior written consent from LifeSpan BioSciences, Inc.

Created on 9/23/2014

© 2014 LifeSpan BioSciences