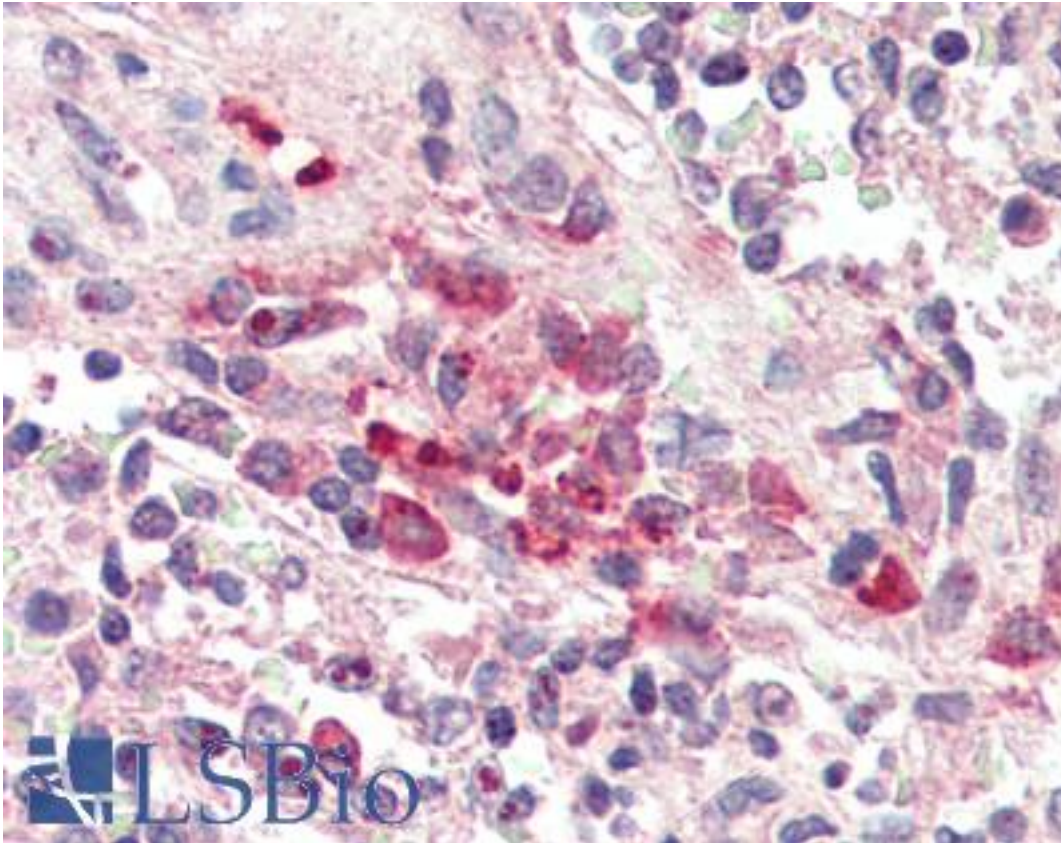


TREM2 / TREM-2 Goat anti-Human Polyclonal (C-Terminus) Antibody - LS-B2400 - LSBio	
<b>CatalogID:</b>	LS-B2400
<b>Validation:</b>	This antibody replaces catalog number LS-C55615. It has been validated for use in the following assays: IHC-P.
<b>Target:</b>	triggering receptor expressed on myeloid cells 2 (TREM2)
<b>Synonyms:</b>	TREM2 Antibody, Trem2b Antibody, TREM-2 Antibody, Trem2a Antibody, Trem2c Antibody
<b>Host</b>	TREM2 antibody was produced in Goat
<b>Clonality:</b>	Polyclonal
<b>Immunogen Species:</b>	TREM2 / TREM-2 antibody was raised against Human
<b>Antigen Type:</b>	Synthetic peptide
<b>Immunogen:</b>	TREM2 / TREM-2 antibody was raised against synthetic peptide C-HGQKPGTHPPSELD from the C-terminus of human TREM2 (NP_061838.1). Percent identity with other species by BLAST analysis: Human (100%), Gorilla (93%), Gibbon (93%), Monkey (93%).
<b>Specificity:</b>	Human TREM2.
<b>Epitope:</b>	C-Terminus
<b>Reactivity:</b>	Human
<b>Predicted Reactivity:</b>	Gorilla, Gibbon, Monkey
<b>Purification:</b>	Immunoaffinity purified
<b>Presentation:</b>	Tris-buffered saline, pH 7.3, 0.5% BSA, 0.02% sodium azide
<b>Recommended Storage:</b>	Store at -20°C. Minimize freezing and thawing.
<b>Usage Summary:</b>	Immunohistochemistry: LS-B2400 was validated for use in immunohistochemistry on a panel of 21 formalin-fixed, paraffin-embedded (FFPE) human tissues after heat induced antigen retrieval in pH 6.0 citrate buffer. After incubation with the primary antibody, slides were incubated with biotinylated secondary antibody, followed by alkaline phosphatase-streptavidin and chromogen. The stained slides were evaluated by a pathologist to confirm staining specificity. The optimal working concentration for LS-B2400 was determined to be 2.5 ug/ml.
<b>Uses:</b>	IHC - Paraffin (2.5 µg/ml), ELISA (1:32000) (Optimal dilution to be determined by the researcher)
<b>Size:</b>	50 µg
<b>Concentration:</b>	0.5 mg/ml

**Immunohistochemistry Image:**



Anti-TREM2 antibody IHC of human spleen, macrophages. Immunohistochemistry of formalin-fixed, paraffin-embedded tissue after heat-induced antigen retrieval. Antibody LS-B2400 concentration 5 ug/ml.

**Requested From:**

Japan

Laboratory Reagent For In Vitro Research Use Only

Not for resale without prior written consent from LifeSpan BioSciences, Inc.

Created on 9/23/2014

© 2014 LifeSpan BioSciences