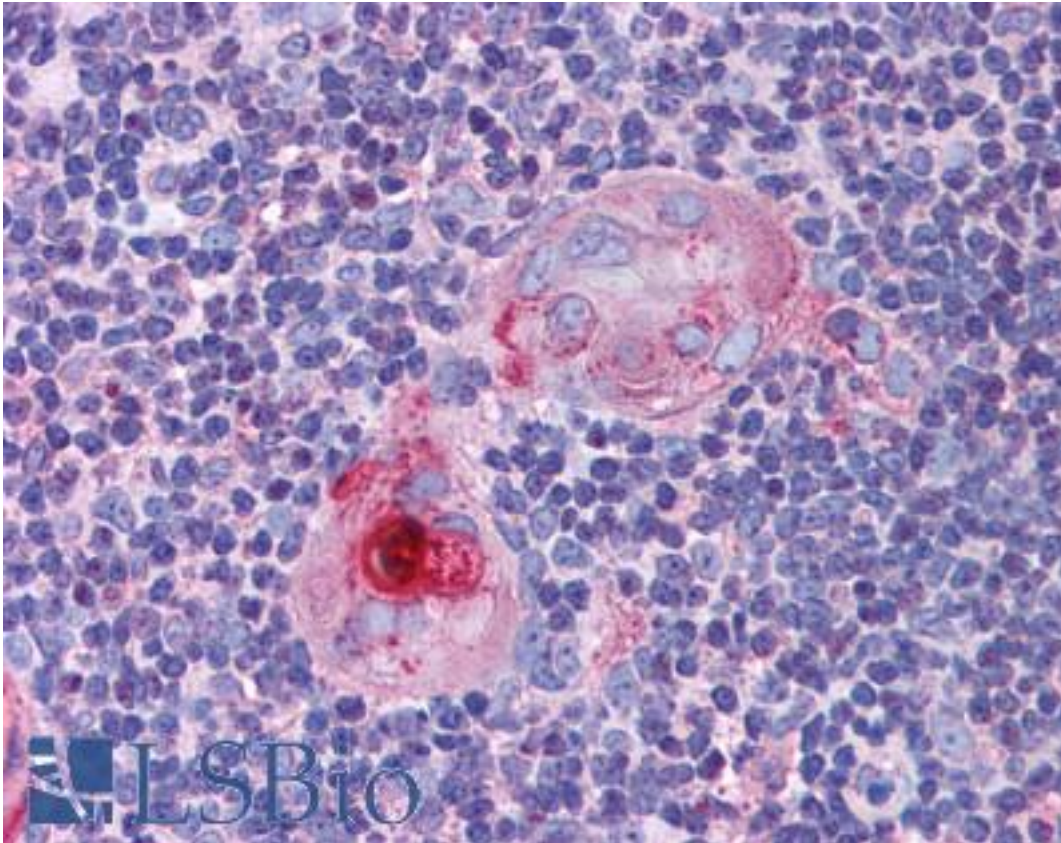


| CASP8 / Caspase 8 Mouse anti-Human Monoclonal (FLICE 4-1-20) Antibody - LS-B240 - LSBio | |
|---|--|
| CatalogID: | LS-B240 |
| Validation: | This antibody replaces catalog number LS-C2774. It has been validated for use in the following assays: IHC. |
| Target: | caspase 8, apoptosis-related cysteine peptidase (CASP8) |
| Synonyms: | CASP8 Antibody, ALPS2B Antibody, Apoptotic protease Mch-5 Antibody, Apoptotic cysteine protease Antibody, Casp-8 Antibody, Caspase-8 Antibody, CAP4 Antibody, Caspase 8 Antibody, MACH Antibody, MCH5 Antibody, MORT1-associated ced-3 homolog Antibody, ICE-like apoptotic protease 5 Antibody, Pro Caspase 8 Antibody, FADD-like ICE Antibody, FLICE Antibody, MACH-alpha-1/2/3 protein Antibody, MACH-beta-1/2/3/4 protein Antibody |
| Family / Subfamily: | Protease / Cysteine C14 |
| Host | CASP8 antibody was produced in Mouse |
| Clonality: | Monoclonal |
| Isotype: | IgG1,k |
| Clone Name: | FLICE 4-1-20 |
| Immunogen Species: | CASP8 / Caspase 8 antibody was raised against Human |
| Immunogen: | CASP8 / Caspase 8 antibody was raised against full-length recombinant human Caspase 8 protein |
| Specificity: | Specific for Caspase 8. |
| Reactivity: | Human |
| Purification: | Ascites |
| Presentation: | Ascites, 0.1% sodium azide. |
| Recommended Storage: | Long term: -20°C; Short term: +4°C. Avoid repeat freeze-thaw cycles. |
| Usage Summary: | Immunohistochemistry: LS-B240 was validated for use in immunohistochemistry on a panel of 21 formalin-fixed, paraffin-embedded (FFPE) human tissues after heat induced antigen retrieval in pH 6.0 citrate buffer. After incubation with the primary antibody, slides were incubated with biotinylated secondary antibody, followed by alkaline phosphatase-streptavidin and chromogen. The stained slides were evaluated by a pathologist to confirm staining specificity. The optimal working concentration for LS-B240 was determined to be 1:50. |
| Uses: | IHC - Paraffin (1:50), Western blot (1:1000) (Optimal dilution to be determined by the researcher) |
| Size: | 50 µl |

Immunohistochemistry Image:



Anti-Caspase 8 antibody IHC of human thymus. Immunohistochemistry of formalin-fixed, paraffin-embedded tissue after heat-induced antigen retrieval. Antibody LS-B240 dilution 1:50.

Requested From:

Japan

Laboratory Reagent For In Vitro Research Use Only

Not for resale without prior written consent from LifeSpan BioSciences, Inc.

Created on 9/23/2014

© 2014 LifeSpan BioSciences