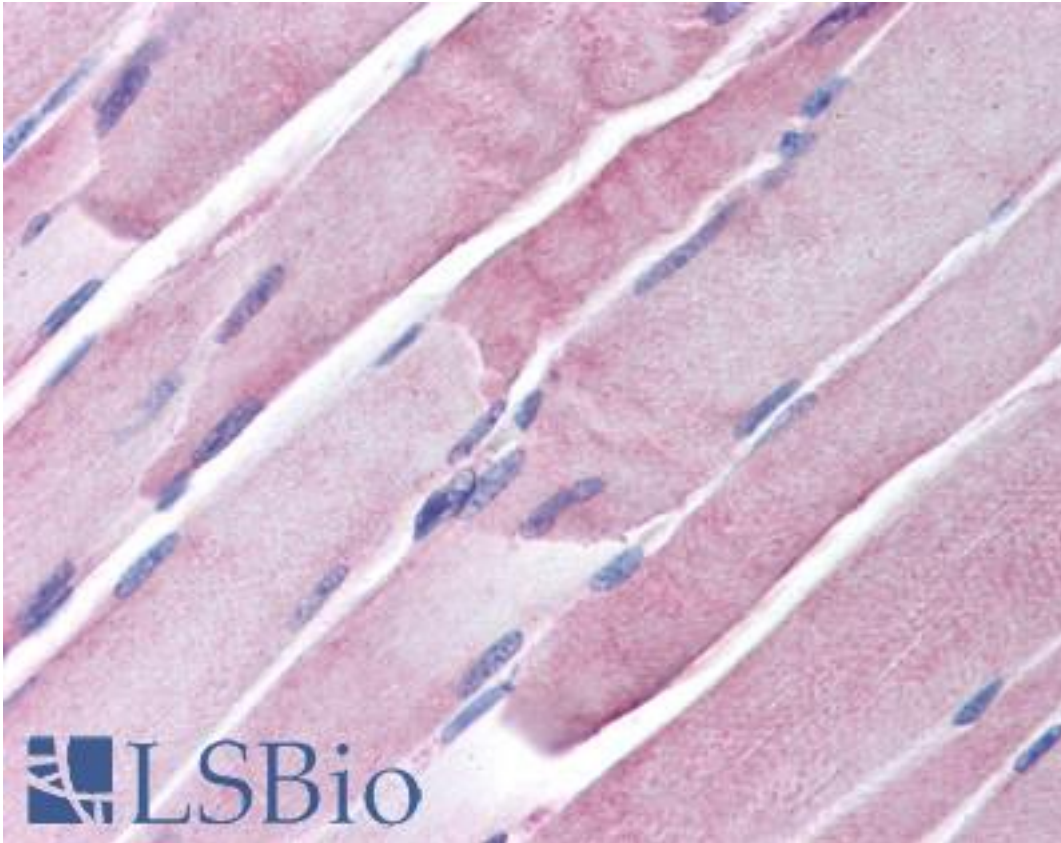


Aspartate Aminotransferase Sheep anti-Pig Polyclonal Antibody - LS-B24 - LSBio	
CatalogID:	LS-B24
Validation:	This antibody replaces catalog number LS-C18751. It has been validated for use in the following assays: IHC.
Target:	glutamic-oxaloacetic transaminase 1, soluble (GOT1)
Synonyms:	GOT1 Antibody, Aspartate Aminotransferase Antibody, ASTQTL1 Antibody, Growth-inhibiting protein 18 Antibody, Transaminase A Antibody, GIG18 Antibody
Host	GOT1 antibody was produced in Sheep
Clonality:	Polyclonal
Immunogen Species:	Aspartate Aminotransferase antibody was raised against Pig
Specificity:	Aspartate Transaminase (AST) [Pig Heart].
Reactivity:	Pig, Human
Purification:	Purified IgG
Presentation:	0.015 M potassium phosphate buffer, 0.15 M sodium chloride, pH 7.2, 0.1% sodium azide.
Recommended Storage:	Long term: -20°C; Short term: -20°C
Usage Summary:	Immunohistochemistry: LS-B24 was validated for use in immunohistochemistry on a panel of 21 formalin-fixed, paraffin-embedded (FFPE) human tissues after heat induced antigen retrieval in pH 6.0 citrate buffer. After incubation with the primary antibody, slides were incubated with biotinylated secondary antibody, followed by alkaline phosphatase-streptavidin and chromogen. The stained slides were evaluated by a pathologist to confirm staining specificity. The optimal working concentration for LS-B24 was determined to be 20 ug/ml.
Uses:	IHC - Paraffin (20 µg/ml), Immunofluorescence, Western blot, Immunoprecipitation (Optimal dilution to be determined by the researcher)
Size:	50 µl
Concentration:	10 mg/ml

Immunohistochemistry Image:



Anti-GOT2 antibody IHC of human skeletal muscle. Immunohistochemistry of formalin-fixed, paraffin-embedded tissue after heat-induced antigen retrieval. Antibody LS-B24 concentration 20 ug/ml.

Requested From:

Japan

Laboratory Reagent For In Vitro Research Use Only

Not for resale without prior written consent from LifeSpan BioSciences, Inc.

Created on 9/23/2014

© 2014 LifeSpan BioSciences