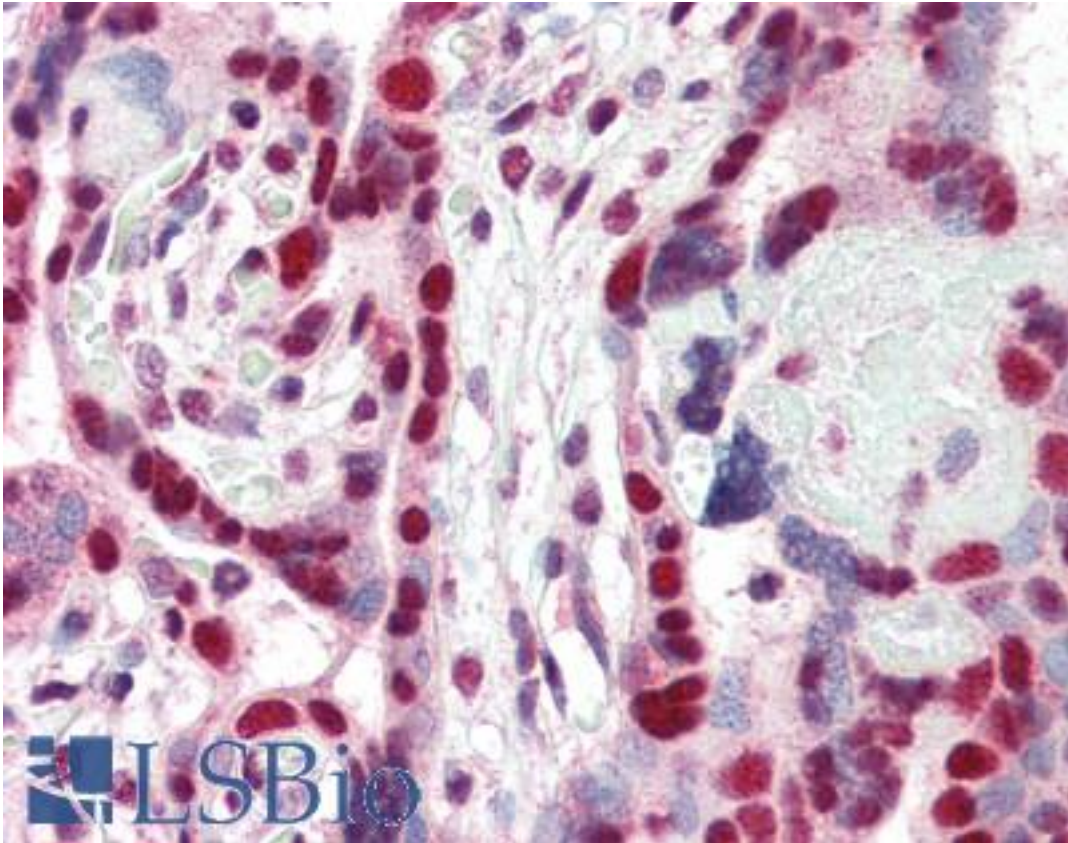


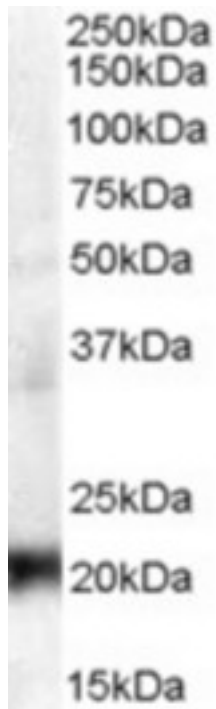
CBX3 / HP1 Gamma Goat anti-Human Polyclonal (Internal) Antibody - LS-B2396 - LSBio	
CatalogID:	LS-B2396
Validation:	This antibody replaces catalog number LS-C20139. It has been validated for use in the following assays: IHC-P.
Target:	chromobox homolog 3 (CBX3)
Synonyms:	CBX3 Antibody, Chromobox homolog 3 Antibody, HP1Hs-gamma Antibody, Heterochromatin-like protein 1 Antibody, Modifier 2 protein Antibody, HP1-GAMMA Antibody, Chromobox protein homolog 3 Antibody, HECH Antibody, HP1 gamma Antibody, HP1 gamma homolog Antibody
Host	CBX3 antibody was produced in Goat
Clonality:	Polyclonal
Immunogen Species:	CBX3 / HP1 Gamma antibody was raised against Human
Antigen Type:	Synthetic peptide
Immunogen:	CBX3 / HP1 Gamma antibody was raised against synthetic peptide C-EAFLNSQKAGKEKD from an internal region of human CBX3 (NP_009207.2; NP_057671.2). Percent identity by BLAST analysis: Human, Gorilla, Orangutan, Gibbon, Monkey, Marmoset, Mouse, Rat, Hamster, Panda, Bovine, Dog, Bat, Horse, Rabbit, Pig, Opossum (100%); Turkey, Chicken, Platypus, Lizard, Xenopus, Frog (93%).
Specificity:	Human CBX3. No cross-reactivity expected with HP1-alpha and HP1-beta. NP_009207.2 and NP_057671.2 represent same protein.
Epitope:	Internal
Reactivity:	Human, Gorilla, Orangutan, Gibbon, Monkey, Mouse, Rat, Bat, Bovine, Dog, Hamster, Horse, Pig, Rabbit
Predicted Reactivity:	Chicken, Xenopus
Purification:	Immunoaffinity purified
Presentation:	Tris-buffered saline, pH 7.3, 0.5% BSA, 0.02% sodium azide
Recommended Storage:	Store at -20°C. Minimize freezing and thawing.
Usage Summary:	Immunohistochemistry: LS-B2396 was validated for use in immunohistochemistry on a panel of 21 formalin-fixed, paraffin-embedded (FFPE) human tissues after heat induced antigen retrieval in pH 6.0 citrate buffer. After incubation with the primary antibody, slides were incubated with biotinylated secondary antibody, followed by alkaline phosphatase-streptavidin and chromogen. The stained slides were evaluated by a pathologist to confirm staining specificity. The optimal working concentration for LS-B2396 was determined to be 2.5 ug/ml.
Uses:	IHC - Paraffin (2.5 µg/ml), Western blot (0.3 - 1 µg/ml), ELISA (1:32000) (Optimal dilution to be determined by the researcher)
Size:	50 µg
Concentration:	0.5 mg/ml

Immunohistochemistry Image:



Anti-CBX3 antibody IHC of human placenta. Immunohistochemistry of formalin-fixed, paraffin-embedded tissue after heat-induced antigen retrieval. Antibody LS-B2396 concentration 5 ug/ml.

Western Blot Image:



(0.3 ug/ml) Staining of A431 lysate (35 ug protein in RIPA buffer). Primary incubation was 1 hour. Detected by chemiluminescence.

Requested From:

Japan

Laboratory Reagent For In Vitro Research Use Only

Not for resale without prior written consent from LifeSpan BioSciences, Inc.

Created on 9/23/2014

© 2014 LifeSpan BioSciences