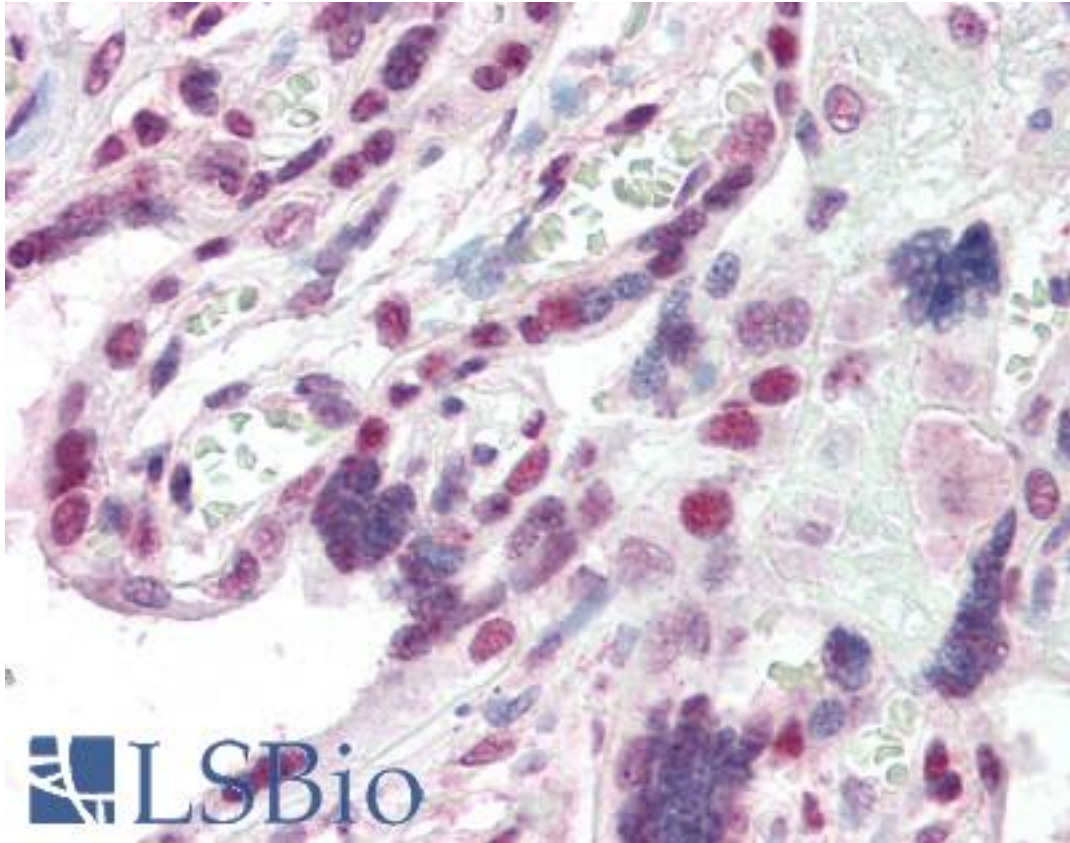


CBX1 / HP1 Beta Goat anti-Human Polyclonal (Internal) Antibody - LS-B2395 - LSBio

<b>CatalogID:</b>	LS-B2395
<b>Validation:</b>	This antibody replaces catalog number LS-C54617. It has been validated for use in the following assays: IHC-P.
<b>Target:</b>	chromobox homolog 1 (CBX1)
<b>Synonyms:</b>	CBX1 Antibody, CBX Antibody, Chromobox protein homolog 1 Antibody, HP1 beta Antibody, HP1Hs-beta Antibody, Heterochromatin protein 1-beta Antibody, HP1Hsbeta Antibody, M31 Antibody, Modifier 1 protein Antibody, MOD1 Antibody, HP1 beta homolog Antibody, HP1-BETA Antibody, Chromobox homolog 1 Antibody, Heterochromatin protein p25 Antibody, p25beta Antibody
<b>Host</b>	CBX1 antibody was produced in Goat
<b>Clonality:</b>	Polyclonal
<b>Immunogen Species:</b>	CBX1 / HP1 Beta antibody was raised against Human
<b>Antigen Type:</b>	Synthetic peptide
<b>Immunogen:</b>	CBX1 / HP1 Beta antibody was raised against synthetic peptide C-QSQKTAHETDKSE from an internal region of human CBX1 (NP_006798.1; NP_001120700.1). Percent identity by BLAST analysis: Human, Gorilla, Gibbon, Monkey, Marmoset, Mouse, Hamster, Elephant, Panda, Dog, Bat, Bovine, Horse, Pig (100%); Rat, Opossum (92%); Platypus, Lizard (85%).
<b>Specificity:</b>	Human CBX1. Variants (NP_006798.1; NP_001120700.1) encode the same protein.
<b>Epitope:</b>	Internal
<b>Reactivity:</b>	Human, Gorilla, Gibbon, Monkey, Mouse, Bat, Bovine, Dog, Hamster, Horse, Pig
<b>Predicted Reactivity:</b>	Rat
<b>Purification:</b>	Immunoaffinity purified
<b>Presentation:</b>	Tris-buffered saline, pH 7.3, 0.5% BSA, 0.02% sodium azide
<b>Recommended Storage:</b>	Store at -20°C. Minimize freezing and thawing.
<b>Usage Summary:</b>	Immunohistochemistry: LS-B2395 was validated for use in immunohistochemistry on a panel of 21 formalin-fixed, paraffin-embedded (FFPE) human tissues after heat induced antigen retrieval in pH 6.0 citrate buffer. After incubation with the primary antibody, slides were incubated with biotinylated secondary antibody, followed by alkaline phosphatase-streptavidin and chromogen. The stained slides were evaluated by a pathologist to confirm staining specificity. The optimal working concentration for LS-B2395 was determined to be 2.5 ug/ml.
<b>Uses:</b>	IHC - Paraffin (2.5 µg/ml), Western blot (1:32000) & (0.3 - 1 µg/ml), ELISA (1:32000) (Optimal dilution to be determined by the researcher)
<b>Size:</b>	50 µg
<b>Concentration:</b>	0.5 mg/ml

**Immunohistochemistry Image:**



Anti-CBX1 antibody IHC of human placenta. Immunohistochemistry of formalin-fixed, paraffin-embedded tissue after heat-induced antigen retrieval. Antibody LS-B2395 concentration 5 ug/ml.

**Western Blot Image:**



Antibody (0.3 ug/ml) staining of A431 lysate (35 ug protein in RIPA buffer). Primary incubation was 1 hour. Detected by chemiluminescence.

**Requested From:**

Japan

Laboratory Reagent For In Vitro Research Use Only

Not for resale without prior written consent from LifeSpan BioSciences, Inc.

Created on 9/23/2014

© 2014 LifeSpan BioSciences