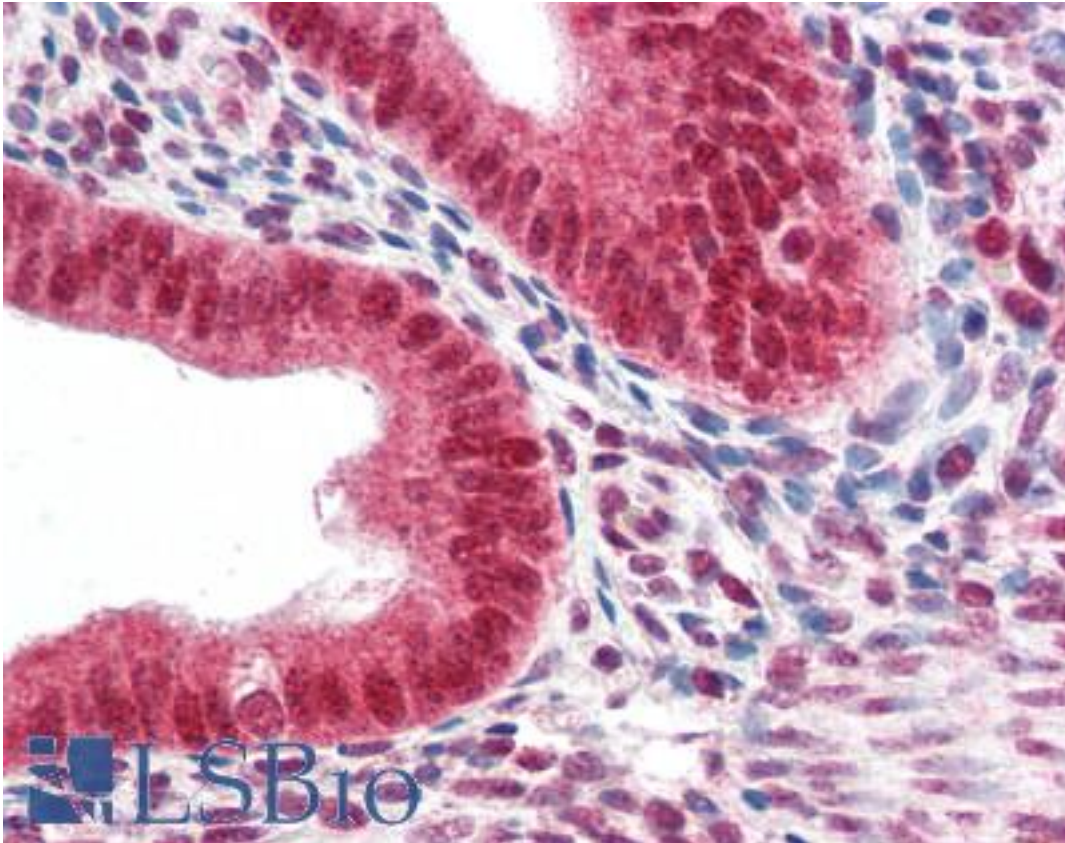


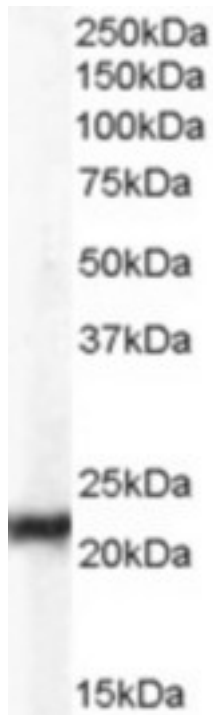
CBX5 / HP1 Alpha Goat anti-Human Polyclonal (Internal) Antibody - LS-B2394 - LSBio	
<b>CatalogID:</b>	LS-B2394
<b>Validation:</b>	This antibody replaces catalog number LS-C54619. It has been validated for use in the following assays: IHC-P.
<b>Target:</b>	chromobox homolog 5 (CBX5)
<b>Synonyms:</b>	CBX5 Antibody, Chromobox homolog 5 Antibody, HP1Hs alpha Antibody, HP1Hs-alpha Antibody, HP1 Antibody, HP1 alpha homolog Antibody, HP1 alpha Antibody, HP1-ALPHA Antibody, HP1A Antibody, Antigen p25 Antibody, Chromobox protein homolog 5 Antibody
<b>Host</b>	CBX5 antibody was produced in Goat
<b>Clonality:</b>	Polyclonal
<b>Immunogen Species:</b>	CBX5 / HP1 Alpha antibody was raised against Human
<b>Antigen Type:</b>	Synthetic peptide
<b>Immunogen:</b>	CBX5 / HP1 Alpha antibody was raised against synthetic peptide C-NKRKSNFNSADDIK from an internal region of human CBX5 / HP1 (NP_036249.1; NP_001120793.1; NP_001120794.1). Percent identity by BLAST analysis: Human, Gorilla, Gibbon, Monkey, Marmoset, Sheep, Bovine, Horse, Pig (100%); Mouse, Rat, Hamster, Elephant, Panda, Dog, Rabbit (93%); Bat (87%).
<b>Specificity:</b>	Human CBX5 / HP1. Variants (NP_036249.1; NP_001120793.1; NP_001120794.1) encode the same protein.
<b>Epitope:</b>	Internal
<b>Reactivity:</b>	Human, Gorilla, Gibbon, Monkey, Bovine, Horse, Pig, Sheep
<b>Predicted Reactivity:</b>	Mouse, Rat, Dog, Hamster, Rabbit
<b>Purification:</b>	Immunoaffinity purified
<b>Presentation:</b>	Tris-buffered saline, pH 7.3, 0.5% BSA, 0.02% sodium azide
<b>Recommended Storage:</b>	Store at -20°C. Minimize freezing and thawing.
<b>Usage Summary:</b>	Immunohistochemistry: LS-B2394 was validated for use in immunohistochemistry on a panel of 21 formalin-fixed, paraffin-embedded (FFPE) human tissues after heat induced antigen retrieval in pH 6.0 citrate buffer. After incubation with the primary antibody, slides were incubated with biotinylated secondary antibody, followed by alkaline phosphatase-streptavidin and chromogen. The stained slides were evaluated by a pathologist to confirm staining specificity. The optimal working concentration for LS-B2394 was determined to be 2.5 µg/ml.
<b>Uses:</b>	IHC - Paraffin (2.5 µg/ml), Western blot (1:128000) & (0.03 - 0.1 µg/ml), ELISA (1:128000) (Optimal dilution to be determined by the researcher)
<b>Size:</b>	50 µg
<b>Concentration:</b>	0.5 mg/ml

**Immunohistochemistry Image:**



Anti-CBX5 / HP1 antibody IHC of human uterus. Immunohistochemistry of formalin-fixed, paraffin-embedded tissue after heat-induced antigen retrieval. Antibody LS-B2394 concentration 5 ug/ml.

**Western Blot Image:**



Antibody (0.03 ug/ml) staining of Hela lysate (35 ug protein in RIPA buffer). Primary incubation was 1 hour. Detected by chemiluminescence.

**Requested From:**

Japan

Laboratory Reagent For In Vitro Research Use Only

Not for resale without prior written consent from LifeSpan BioSciences, Inc.

Created on 9/23/2014

© 2014 LifeSpan BioSciences