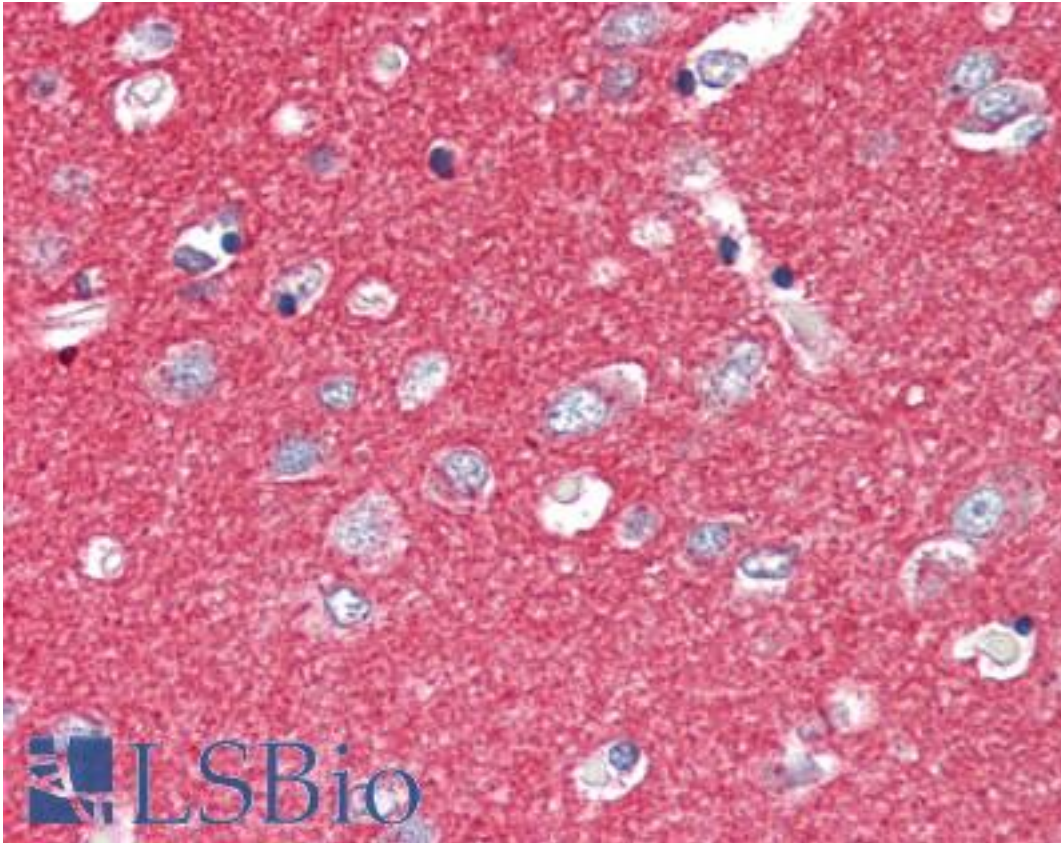


**SNAP25 Goat anti-Human Polyclonal (C-Terminus) Antibody - LS-B2392 - LSBio**

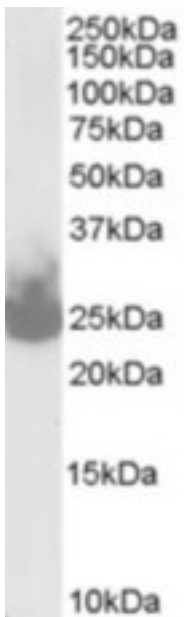
<b>CatalogID:</b>	LS-B2392
<b>Validation:</b>	This antibody replaces catalog number LS-C20213. It has been validated for use in the following assays: IHC-P.
<b>Target:</b>	synaptosomal-associated protein, 25kDa (SNAP25)
<b>Synonyms:</b>	SNAP25 Antibody, BA416N4.2 Antibody, DJ1068F16.2 Antibody, SNAP Antibody, SUP Antibody, Super protein Antibody, RIC4 Antibody, SEC9 Antibody, SNAP-25 Antibody, RIC-4 Antibody
<b>Family / Subfamily:</b>	SNAP-25 / Not assigned-Other
<b>Host</b>	SNAP25 antibody was produced in Goat
<b>Clonality:</b>	Polyclonal
<b>Immunogen Species:</b>	SNAP25 antibody was raised against Human
<b>Antigen Type:</b>	Synthetic peptide
<b>Immunogen:</b>	SNAP25 antibody was raised against synthetic peptide C-DEANQRATKMLGSG from the C-terminus of human SNAP25 (NP_003072.2; NP_570824.1). Percent identity by BLAST analysis: Human, Chimpanzee, Gorilla, Orangutan, Gibbon, Monkey, Marmoset, Mouse, Rat, Hamster, Elephant, Dog, Bat, Bovine, Horse, Rabbit, Opossum, Chicken, Platypus, Lizard, Newt, Salmon, Smelt, Stickleback, Pufferfish, Zebrafish (100%); Frog (93%); Xenopus (86%).
<b>Specificity:</b>	Human SNAP25. This antibody is expected to recognise both reported isoforms NP_003072 and NP_570824.
<b>Epitope:</b>	C-Terminus
<b>Reactivity:</b>	Human, Chimpanzee, Gorilla, Orangutan, Gibbon, Monkey, Mouse, Rat, Bat, Bovine, Dog, Hamster, Horse, Rabbit, Chicken, Zebrafish
<b>Purification:</b>	Immunoaffinity purified
<b>Presentation:</b>	Tris-buffered saline, pH 7.3, 0.5% BSA, 0.02% sodium azide
<b>Recommended Storage:</b>	Store at -20°C. Minimize freezing and thawing.
<b>Usage Summary:</b>	Immunohistochemistry: LS-B2392 was validated for use in immunohistochemistry on a panel of 21 formalin-fixed, paraffin-embedded (FFPE) human tissues after heat induced antigen retrieval in pH 6.0 citrate buffer. After incubation with the primary antibody, slides were incubated with biotinylated secondary antibody, followed by alkaline phosphatase-streptavidin and chromogen. The stained slides were evaluated by a pathologist to confirm staining specificity. The optimal working concentration for LS-B2392 was determined to be 2.5 ug/ml.
<b>Uses:</b>	IHC - Paraffin (2.5 µg/ml), Western blot (0.01 - 0.03 µg/ml), ELISA (1:32000) (Optimal dilution to be determined by the researcher)
<b>Size:</b>	50 µg
<b>Concentration:</b>	0.5 mg/ml

**Immunohistochemistry Image:**



Anti-SNAP25 antibody IHC of human brain, cortex. Immunohistochemistry of formalin-fixed, paraffin-embedded tissue after heat-induced antigen retrieval. Antibody LS-B2392 concentration 5 ug/ml.

**Western Blot Image:**



(0.03 ug/ml) staining of Mouse Brain lysate (35 ug protein in RIPA buffer). Primary incubation was 1 hour. Detected by chemiluminescence.

<b>Requested From:</b>	Japan
Laboratory Reagent For In Vitro Research Use Only	
Not for resale without prior written consent from LifeSpan BioSciences, Inc.	
Created on 9/23/2014	
© 2014 LifeSpan BioSciences	