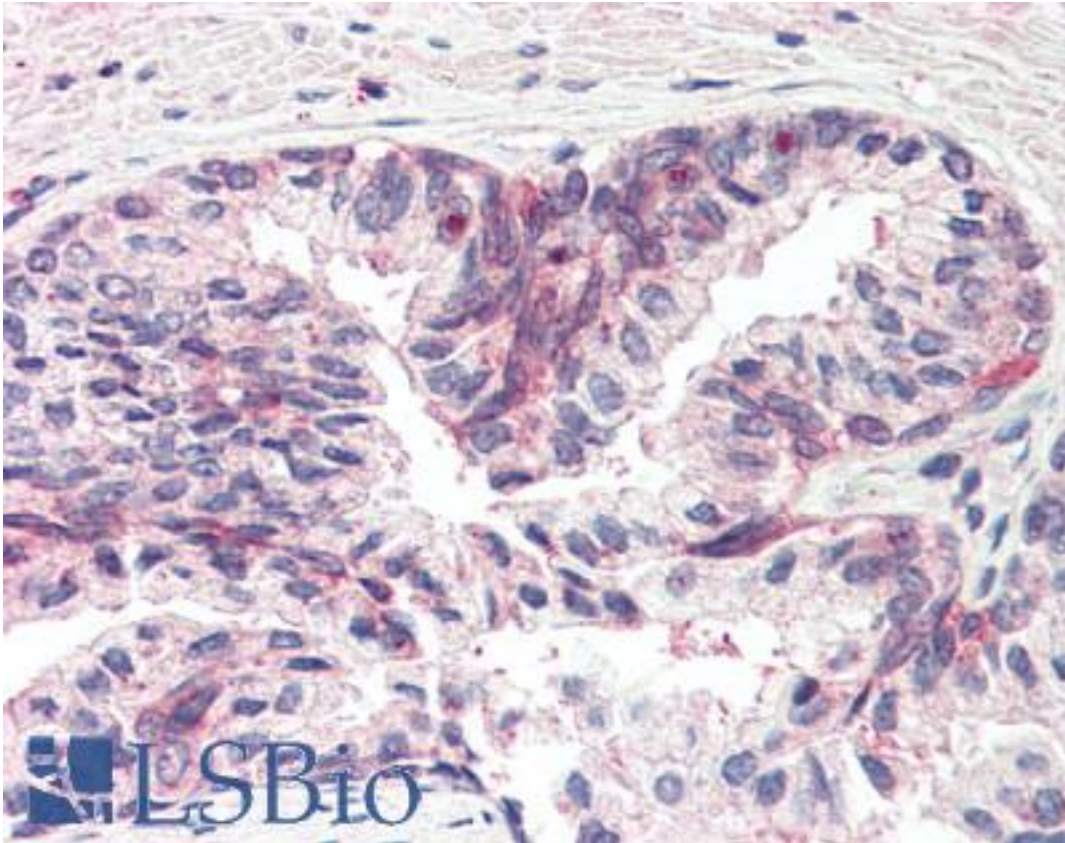


MSX1 Goat anti-Human Polyclonal (N-Terminus) Antibody - LS-B2389 - LSBio	
CatalogID:	LS-B2389
Validation:	This antibody replaces catalog number LS-C55124. It has been validated for use in the following assays: IHC-P.
Target:	msh homeobox 1 (MSX1)
Synonyms:	MSX1 Antibody, ECTD3 Antibody, Homeobox protein MSX-1 Antibody, HOX7 Antibody, Msh homeo box 1 Antibody, Homeobox 7 Antibody, OFC5 Antibody, STHAG1 Antibody, Msh homeobox homolog 1 Antibody, Homeobox protein Hox-7 Antibody, HYD1 Antibody, Msh homeobox 1 Antibody, Msh homeobox 1-like protein Antibody
Host	MSX1 antibody was produced in Goat
Clonality:	Polyclonal
Immunogen Species:	MSX1 antibody was raised against Human
Antigen Type:	Synthetic peptide
Immunogen:	MSX1 antibody was raised against synthetic peptide TSLPLGVKVEDS-C from the N-terminus of human MSX1 (NP_002439.2). Percent identity by BLAST analysis: Human, Chimpanzee, Orangutan, Gibbon, Baboon, Monkey, Galago, Marmoset, Tamarin, Mouse, Rat, Elephant, Bovine, Pig (100%); Gorilla (92%).
Specificity:	Human MSX1.
Epitope:	N-Terminus
Reactivity:	Human, Chimpanzee, Orangutan, Gibbon, Monkey, Mouse, Rat, Bovine, Pig
Predicted Reactivity:	Gorilla
Purification:	Immunoaffinity purified
Presentation:	Tris-buffered saline, pH 7.3, 0.5% BSA, 0.02% sodium azide
Recommended Storage:	Store at -20°C. Minimize freezing and thawing.
Usage Summary:	Immunohistochemistry: LS-B2389 was validated for use in immunohistochemistry on a panel of 21 formalin-fixed, paraffin-embedded (FFPE) human tissues after heat induced antigen retrieval in pH 6.0 citrate buffer. After incubation with the primary antibody, slides were incubated with biotinylated secondary antibody, followed by alkaline phosphatase-streptavidin and chromogen. The stained slides were evaluated by a pathologist to confirm staining specificity. The optimal working concentration for LS-B2389 was determined to be 2.5 µg/ml.
Uses:	IHC - Paraffin (2.5 µg/ml), ELISA (1:16000) (Optimal dilution to be determined by the researcher)
Size:	50 µg
Concentration:	0.5 mg/ml

Immunohistochemistry Image:



Anti-MSX1 antibody IHC of human prostate. Immunohistochemistry of formalin-fixed, paraffin-embedded tissue after heat-induced antigen retrieval. Antibody LS-B2389 concentration 5 ug/ml.

Requested From:

Japan

Laboratory Reagent For In Vitro Research Use Only

Not for resale without prior written consent from LifeSpan BioSciences, Inc.

Created on 9/23/2014

© 2014 LifeSpan BioSciences