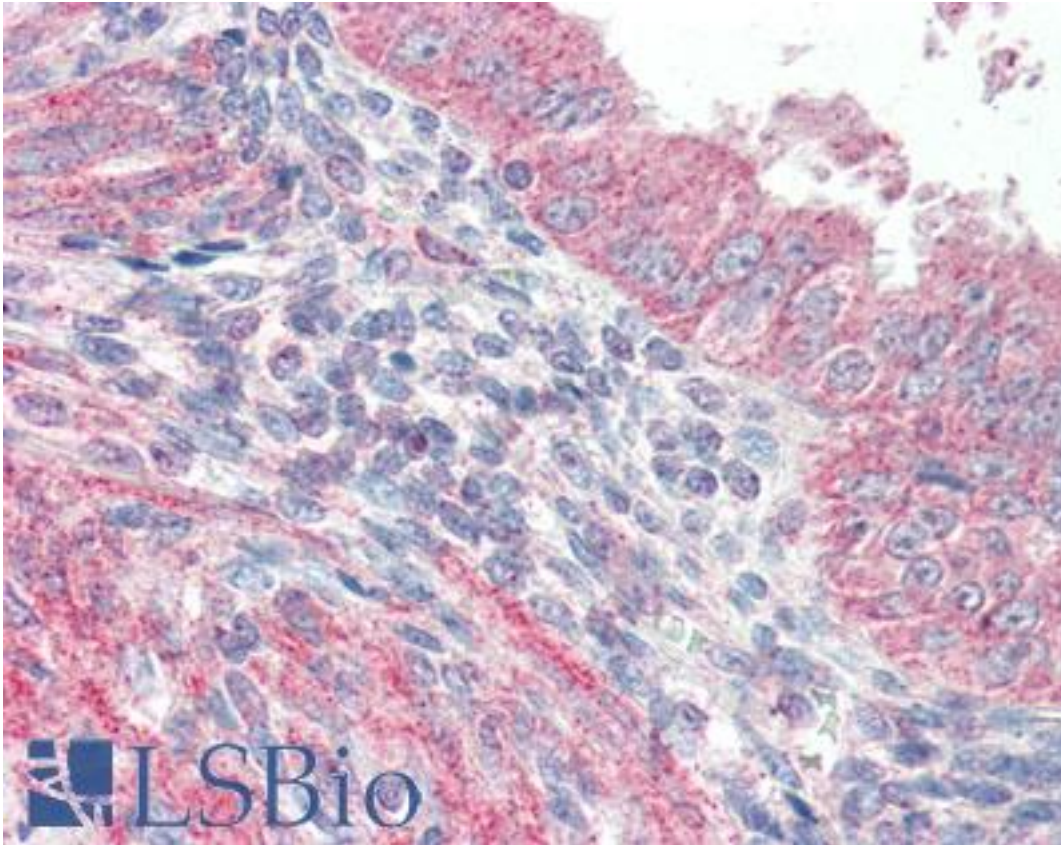


**ATF6 Goat anti-Human Polyclonal (C-Terminus) Antibody - LS-B2388 - LSBio**

|                              |   |
|------------------------------|---|
| <b>CatalogID:</b>            | LS-B2388  |
| <b>Validation:</b>           | This antibody replaces catalog number LS-C54552. It has been validated for use in the following assays: IHC-P.  |
| <b>Target:</b>               | activating transcription factor 6 (ATF6)  |
| <b>Synonyms:</b>             | ATF6 Antibody, ATF6-alpha Antibody, ATF6A Antibody  |
| <b>Host</b>                  | ATF6 antibody was produced in Goat  |
| <b>Clonality:</b>            | Polyclonal  |
| <b>Immunogen Species:</b>    | ATF6 antibody was raised against Human  |
| <b>Antigen Type:</b>         | Synthetic peptide   |
| <b>Immunogen:</b>            | ATF6 antibody was raised against synthetic peptide (C-EATHVVSTIPESLQ) from C-terminus of human ATF6. Percent identity by BLAST analysis: Human, Gorilla, Gibbon, Elephant, Rabbit (100%); Mouse, Hamster, Bovine, Horse, Pig (93%); Monkey, Panda (86%).  |
| <b>Specificity:</b>          | Human ATF6.   |
| <b>Epitope:</b>              | C-Terminus  |
| <b>Reactivity:</b>           | Human, Gorilla, Gibbon, Rabbit  |
| <b>Predicted Reactivity:</b> | Mouse, Bovine, Hamster, Horse, Pig  |
| <b>Purification:</b>         | Immunoaffinity purified   |
| <b>Presentation:</b>         | Tris-buffered saline, pH 7.3, 0.5% BSA, 0.02% sodium azide  |
| <b>Recommended Storage:</b>  | Store at -20°C. Minimize freezing and thawing.  |
| <b>Usage Summary:</b>        | Immunohistochemistry: LS-B2388 was validated for use in immunohistochemistry on a panel of 21 formalin-fixed, paraffin-embedded (FFPE) human tissues after heat induced antigen retrieval in pH 6.0 citrate buffer. After incubation with the primary antibody, slides were incubated with biotinylated secondary antibody, followed by alkaline phosphatase-streptavidin and chromogen. The stained slides were evaluated by a pathologist to confirm staining specificity. The optimal working concentration for LS-B2388 was determined to be 2.5 ug/ml. |
| <b>Uses:</b>                 | IHC - Paraffin (2.5 µg/ml), ELISA (1:8000) (Optimal dilution to be determined by the researcher)  |
| <b>Size:</b>                 | 50 µg   |
| <b>Concentration:</b>        | 0.5 mg/ml   |

**Immunohistochemistry Image:**



Anti-ATF6 antibody IHC of human uterus. Immunohistochemistry of formalin-fixed, paraffin-embedded tissue after heat-induced antigen retrieval. Antibody LS-B2388 concentration 5 ug/ml.

**Requested From:**

Japan

Laboratory Reagent For In Vitro Research Use Only

Not for resale without prior written consent from LifeSpan BioSciences, Inc.

Created on 9/23/2014

© 2014 LifeSpan BioSciences