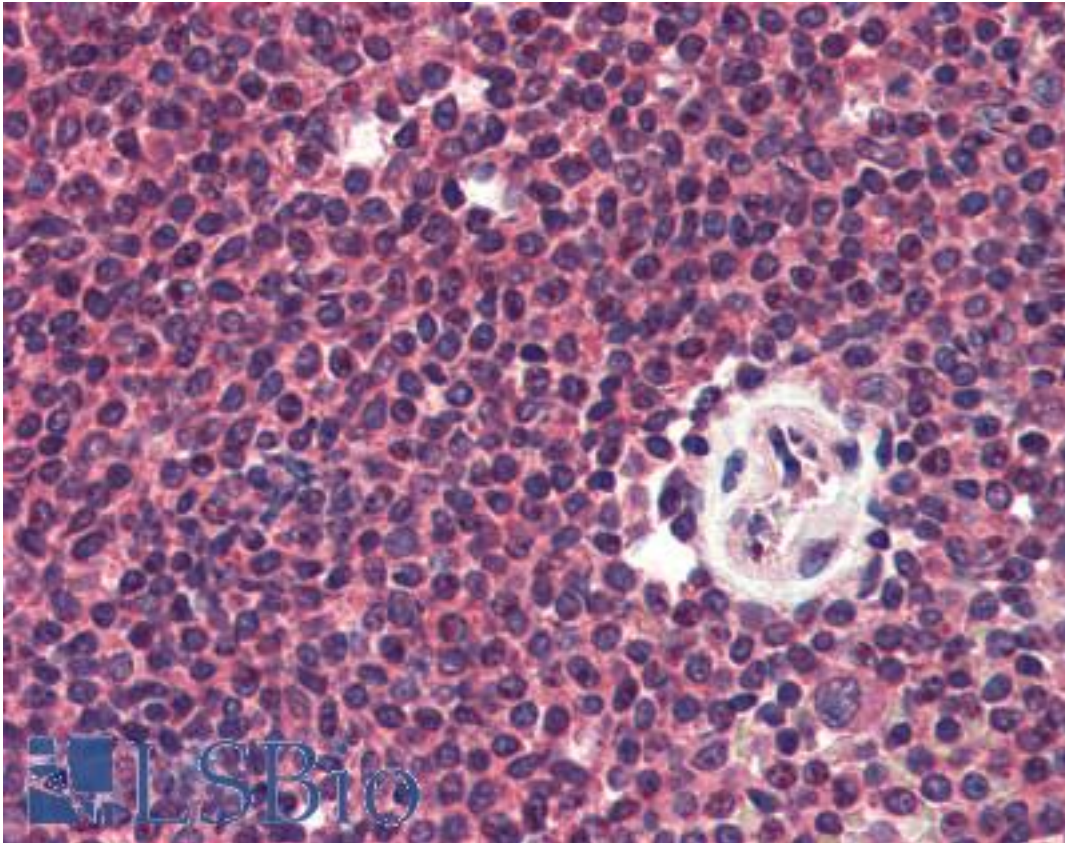


CCR5 Goat anti-Human Polyclonal (aa3-30) Antibody - LS-B2386 - LSBio	
CatalogID:	LS-B2386
Validation:	This antibody replaces catalog number LS-C4394. It has been validated for use in the following assays: IHC-P.
Target:	chemokine (C-C motif) receptor 5 (gene/pseudogene) (CCR5)
Synonyms:	CCR5 Antibody, C-C chemokine receptor 5 Antibody, CD195 antigen Antibody, CD195 Antibody, C-C CKR-5 Antibody, Chemokine c-c motif receptor 5 Antibody, Chemr13 Antibody, CMKBR5 Antibody, CKR5 Antibody, Cc chemokine receptor 5 Antibody, CCCKR5 Antibody, CCR-5 Antibody, Ccr5 receptor Antibody, Chemokine receptor CCR5 Antibody, HIV-1 fusion coreceptor Antibody, IDDM22 Antibody, C-C chemokine receptor type 5 Antibody, CC-CKR-5 Antibody, CKR-5 Antibody
Family / Subfamily:	GPCR / Chemokine
Host	CCR5 antibody was produced in Goat
Clonality:	Polyclonal
Isotype:	IgG
Immunogen Species:	CCR5 antibody was raised against Human
Antigen Type:	Synthetic peptide
Immunogen:	CCR5 antibody was raised against synthetic peptide corresponding to aa 3-30 (Y3QVSSPIYDINYYTSEPCQKINVKQIAA30) of the C-terminal domain of human CCR5 (C-C chemokine receptor 5). Percent identity by BLAST analysis: Human (100%); Chimpanzee, Monkey (96%); Orangutan, Baboon (93%); Gorilla (89%).
Specificity:	Recognizes human CCR5.
Epitope:	aa3-30
Reactivity:	Human
Predicted Reactivity:	Chimpanzee, Orangutan, Monkey
Purification:	Immunoaffinity purified
Presentation:	PBS, 1 mg/ml BSA, 0.1% sodium azide.
Recommended Storage:	Long term: Add glycerol (40-50%) aliquot and store at -20C; Short term:+4C
Usage Summary:	Immunohistochemistry: LS-B2386 was validated for use in immunohistochemistry on a panel of 21 formalin-fixed, paraffin-embedded (FFPE) human tissues after heat induced antigen retrieval in pH 6.0 citrate buffer. After incubation with the primary antibody, slides were incubated with biotinylated secondary antibody, followed by alkaline phosphatase-streptavidin and chromogen. The stained slides were evaluated by a pathologist to confirm staining specificity. The optimal working concentration for LS-B2386 was determined to be 5 ug/ml.
Uses:	IHC - Paraffin (5 µg/ml), ICC (1:300), Western blot (1:1000), ELISA (1:100000) (Optimal dilution to be determined by the researcher)
Size:	50 µg

Immunohistochemistry Image:



Anti-CCR5 antibody IHC of human spleen. Immunohistochemistry of formalin-fixed, paraffin-embedded tissue after heat-induced antigen retrieval. Antibody LS-B2386 concentration 5 ug/ml.

Requested From:

Japan

Laboratory Reagent For In Vitro Research Use Only

Not for resale without prior written consent from LifeSpan BioSciences, Inc.

Created on 9/23/2014

© 2014 LifeSpan BioSciences