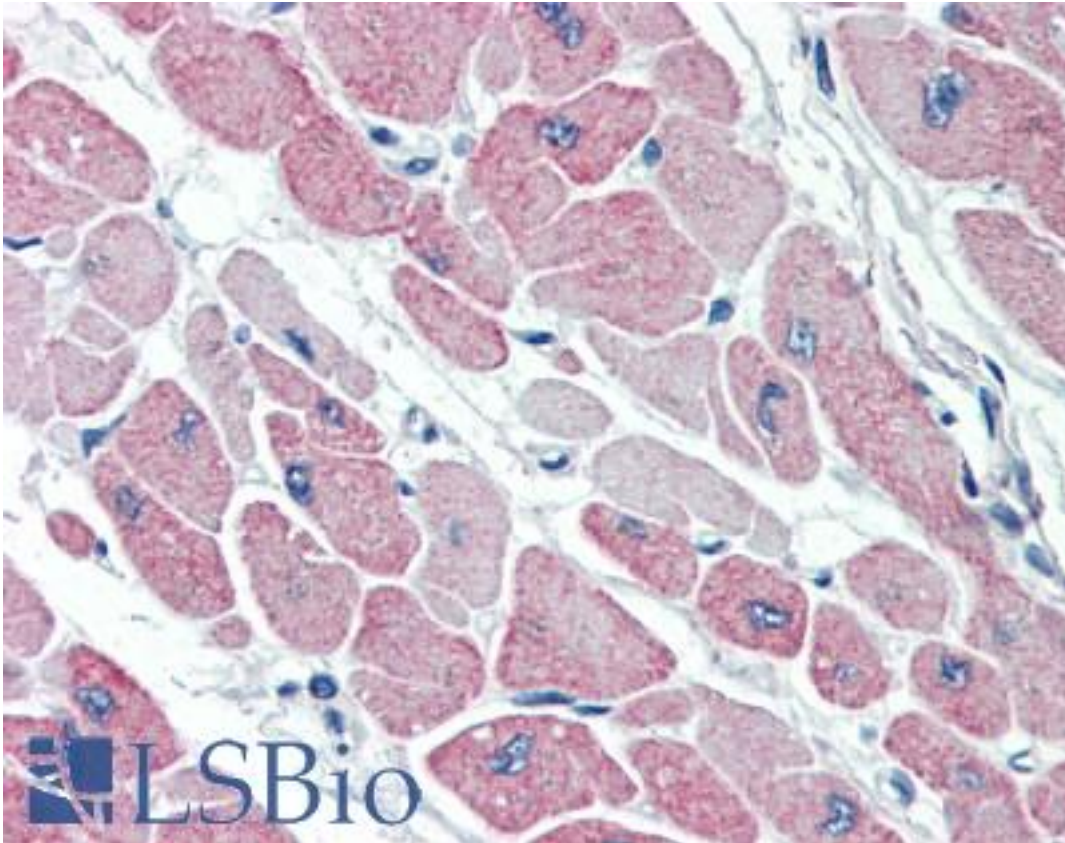


CLIC4 Goat anti-Human Polyclonal (N-Terminus) Antibody - LS-B2383 - LSBio

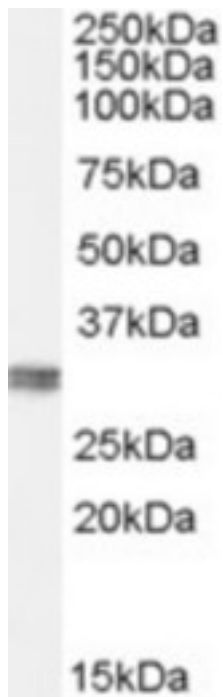
CatalogID:	LS-B2383
Validation:	This antibody replaces catalog number LS-C61724. It has been validated for use in the following assays: IHC-P.
Target:	chloride intracellular channel 4 (CLIC4)
Synonyms:	CLIC4 Antibody, CLIC4L Antibody, DKFZP566G223 Antibody, Mc3s5 Antibody, HuH1 Antibody, MTCLIC Antibody, p64H1 Antibody
Family / Subfamily:	Ion Channel / Chloride channel - intracellular
Host	CLIC4 antibody was produced in Goat
Clonality:	Polyclonal
Immunogen Species:	CLIC4 antibody was raised against Human
Antigen Type:	Synthetic peptide
Immunogen:	CLIC4 antibody was raised against synthetic peptide NGLKEEDKEPLIE-C from the N-terminus of human CLIC4 (NP_039234.1). Percent identity by BLAST analysis: Human, Orangutan, Gibbon, Monkey, Marmoset, Mouse, Rat (100%); Bovine (92%); Dog (85%).
Specificity:	Human CLIC4.
Epitope:	N-Terminus
Reactivity:	Human, Orangutan, Gibbon, Monkey, Mouse, Rat
Predicted Reactivity:	Bovine
Purification:	Immunoaffinity purified
Presentation:	Tris-buffered saline, pH 7.3, 0.5% BSA, 0.02% sodium azide
Recommended Storage:	Store at -20°C. Minimize freezing and thawing.
Usage Summary:	Immunohistochemistry: LS-B2383 was validated for use in immunohistochemistry on a panel of 21 formalin-fixed, paraffin-embedded (FFPE) human tissues after heat induced antigen retrieval in pH 6.0 citrate buffer. After incubation with the primary antibody, slides were incubated with biotinylated secondary antibody, followed by alkaline phosphatase-streptavidin and chromogen. The stained slides were evaluated by a pathologist to confirm staining specificity. The optimal working concentration for LS-B2383 was determined to be 5 ug/ml.
Uses:	IHC - Paraffin (5 µg/ml), Immunofluorescence (5 µg/ml), Western blot (0.1 - 0.3 µg/ml), ELISA (1:64000) (Optimal dilution to be determined by the researcher)
Size:	50 µg
Concentration:	0.5 mg/ml

Immunohistochemistry Image:



Anti-CLIC4 antibody IHC of human heart. Immunohistochemistry of formalin-fixed, paraffin-embedded tissue after heat-induced antigen retrieval. Antibody LS-B2383 concentration 5 ug/ml.

Western Blot Image:



Antibody (0.1 ug/ml) staining of human kidney lysate (35 ug protein in RIPA buffer). Primary incubation was 1 hour. Detected by chemiluminescence.

Requested From:

Japan

Laboratory Reagent For In Vitro Research Use Only

Not for resale without prior written consent from LifeSpan BioSciences, Inc.

Created on 9/23/2014

© 2014 LifeSpan BioSciences