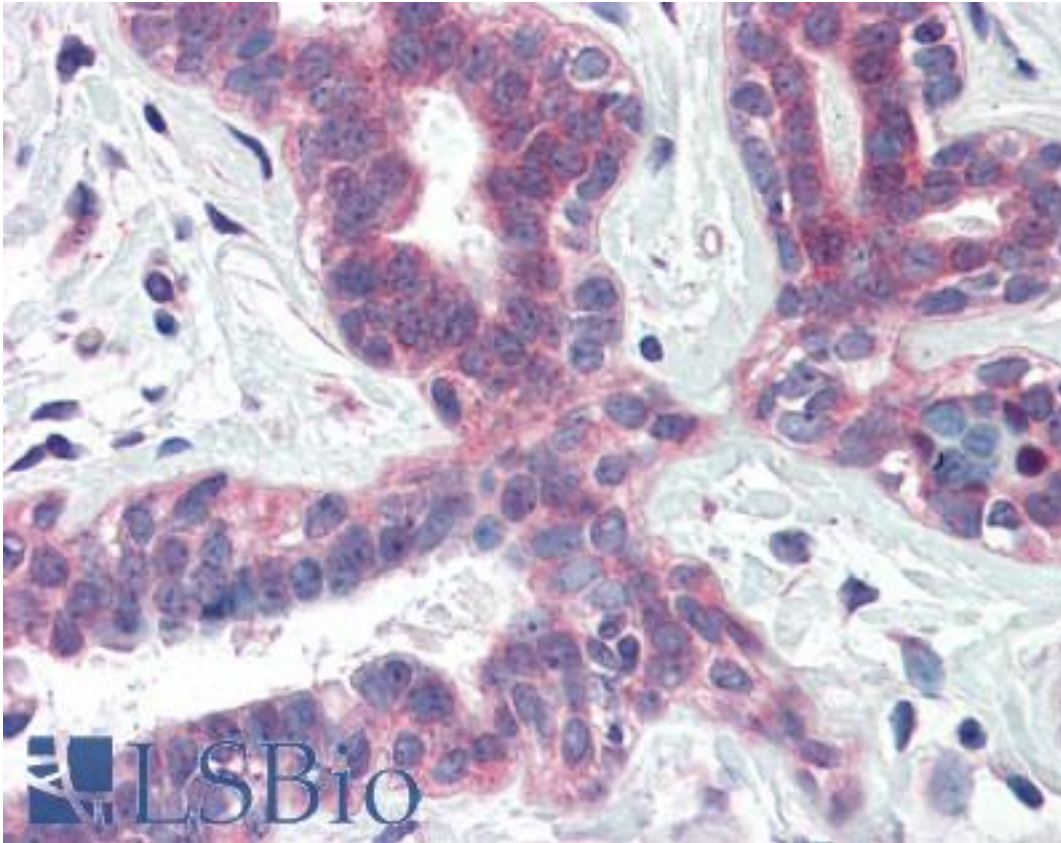


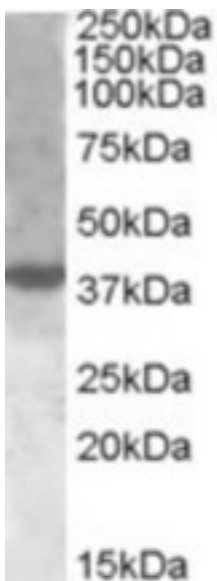
XBP1 Goat anti-Human Polyclonal (Internal) Antibody - LS-B2382 - LSBio	
CatalogID:	LS-B2382
Validation:	This antibody replaces catalog number LS-C55698. It has been validated for use in the following assays: IHC-P.
Target:	X-box binding protein 1 (XBP1)
Synonyms:	XBP1 Antibody, X-box binding protein 1 Antibody, X-box-binding protein 1 Antibody, XBP2 Antibody, TREB5 Antibody, XBP-1 Antibody
Host	XBP1 antibody was produced in Goat
Clonality:	Polyclonal
Immunogen Species:	XBP1 antibody was raised against Human
Antigen Type:	Synthetic peptide
Immunogen:	XBP1 antibody was raised against synthetic peptide C-NHSWEDTFANELFPQ from an internal region of human XBP1 (NP_001073007.1). Percent identity by BLAST analysis: Human, Chimpanzee, Gorilla, Orangutan, Gibbon, Monkey, Marmoset (100%); Mouse, Rat, Hamster, Panda (93%); Pig, Opossum (87%); Bat, Turkey, Pufferfish (80%).
Specificity:	Human XBP1. This antibody is expected to recognise isoform XBP1(S) (NP_001073007.1) only.
Epitope:	Internal
Reactivity:	Human, Chimpanzee, Gorilla, Orangutan, Gibbon, Monkey
Predicted Reactivity:	Mouse, Rat, Hamster
Purification:	Immunoaffinity purified
Presentation:	Tris-buffered saline, pH 7.3, 0.5% BSA, 0.02% sodium azide
Recommended Storage:	Store at -20°C. Minimize freezing and thawing.
Usage Summary:	Immunohistochemistry: LS-B2382 was validated for use in immunohistochemistry on a panel of 21 formalin-fixed, paraffin-embedded (FFPE) human tissues after heat induced antigen retrieval in pH 6.0 citrate buffer. After incubation with the primary antibody, slides were incubated with biotinylated secondary antibody, followed by alkaline phosphatase-streptavidin and chromogen. The stained slides were evaluated by a pathologist to confirm staining specificity. The optimal working concentration for LS-B2382 was determined to be 5 ug/ml.
Uses:	IHC - Paraffin (5 µg/ml), Western blot (1 - 3 µg/ml), ELISA (1:4000) (Optimal dilution to be determined by the researcher)
Size:	50 µg
Concentration:	0.5 mg/ml

Immunohistochemistry Image:



Anti-XBP1 antibody IHC of human breast. Immunohistochemistry of formalin-fixed, paraffin-embedded tissue after heat-induced antigen retrieval. Antibody LS-B2382 concentration 5 ug/ml.

Western Blot Image:



Antibody (1 ug/ml) staining of nuclear HeLa lysate (35 ug protein in RIPA buffer). Primary incubation was 1 hour. Detected by chemiluminescence.

Requested From:

Japan

Laboratory Reagent For In Vitro Research Use Only

Not for resale without prior written consent from LifeSpan BioSciences, Inc.

Created on 9/23/2014

© 2014 LifeSpan BioSciences