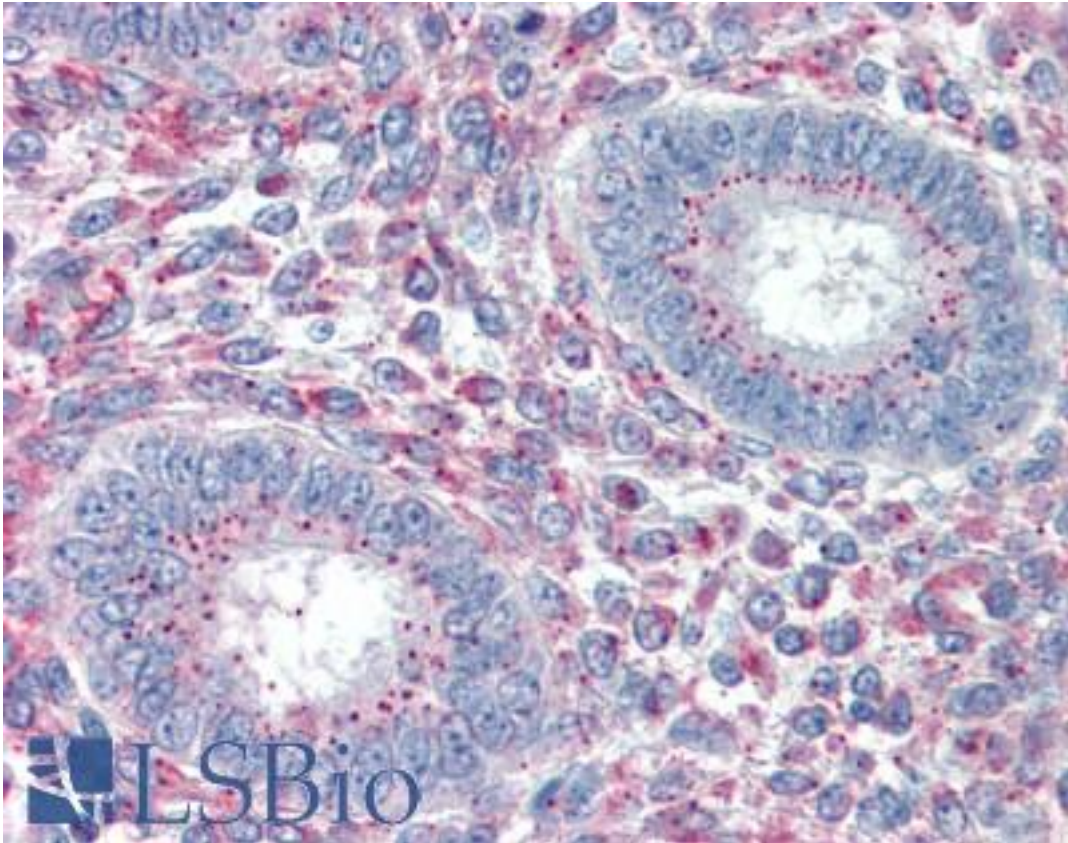


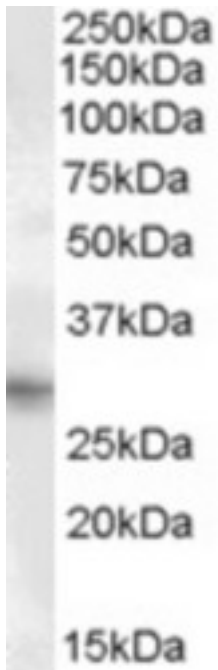
PRX-1 / PRRX1 Goat anti-Human Polyclonal (Internal) Antibody - LS-B2380 - LSBio	
CatalogID:	LS-B2380
Validation:	This antibody replaces catalog number LS-C55324. It has been validated for use in the following assays: IHC-P.
Target:	Paired Related Homeobox 1 (PRRX1)
Synonyms:	PRRX1 Antibody, AGOTC Antibody, Homeobox protein PHOX1 Antibody, Paired related homeobox 1 Antibody, PHOX1 Antibody, PRX1 Antibody, Paired mesoderm homeo box 1 Antibody, PRX-1 Antibody, PMX1 Antibody
Host	PRRX1 antibody was produced in Goat
Clonality:	Polyclonal
Immunogen Species:	PRX-1 / PRRX1 antibody was raised against Human
Antigen Type:	Synthetic peptide
Immunogen:	PRX-1 / PRRX1 antibody was raised against synthetic peptide C-GSDTPQQDNDQ from an internal region of human PRRX1 (NP_008833.1; NP_073207.1). Percent identity by BLAST analysis: Human, Gorilla, Gibbon, Monkey, Mouse, Rat, Hamster, Panda, Bovine, Dog, Horse, Rabbit, Pig, Opossum, Chicken (100%); Marmoset, Elephant (91%).
Specificity:	Human PRRX1. This antibody is expected to recognise both reported isoforms (NP_008833.1; NP_073207.1).
Epitope:	Internal
Reactivity:	Human, Gorilla, Gibbon, Mouse, Rat, Bovine, Dog, Hamster, Horse, Pig, Rabbit, Chicken
Predicted Reactivity:	Monkey
Purification:	Immunoaffinity purified
Presentation:	Tris-buffered saline, pH 7.3, 0.5% BSA, 0.02% sodium azide
Recommended Storage:	Store at -20°C. Minimize freezing and thawing.
Usage Summary:	Immunohistochemistry: LS-B2380 was validated for use in immunohistochemistry on a panel of 21 formalin-fixed, paraffin-embedded (FFPE) human tissues after heat induced antigen retrieval in pH 6.0 citrate buffer. After incubation with the primary antibody, slides were incubated with biotinylated secondary antibody, followed by alkaline phosphatase-streptavidin and chromogen. The stained slides were evaluated by a pathologist to confirm staining specificity. The optimal working concentration for LS-B2380 was determined to be 5 µg/ml.
Uses:	IHC - Paraffin (5 µg/ml), Western blot (1 - 3 µg/ml), ELISA (1:4000) (Optimal dilution to be determined by the researcher)
Size:	50 µg
Concentration:	0.5 mg/ml

Immunohistochemistry Image:



Anti-PRRX1 antibody IHC of human uterus. Immunohistochemistry of formalin-fixed, paraffin-embedded tissue after heat-induced antigen retrieval. Antibody LS-B2380 concentration 5 ug/ml.

Western Blot Image:



Antibody (1 ug/ml) staining of Human Heart lysate (35 ug protein in RIPA buffer). Primary incubation was 1 hour. Detected by chemiluminescence.

Requested From:

Japan

Laboratory Reagent For In Vitro Research Use Only

Not for resale without prior written consent from LifeSpan BioSciences, Inc.

Created on 9/23/2014

© 2014 LifeSpan BioSciences