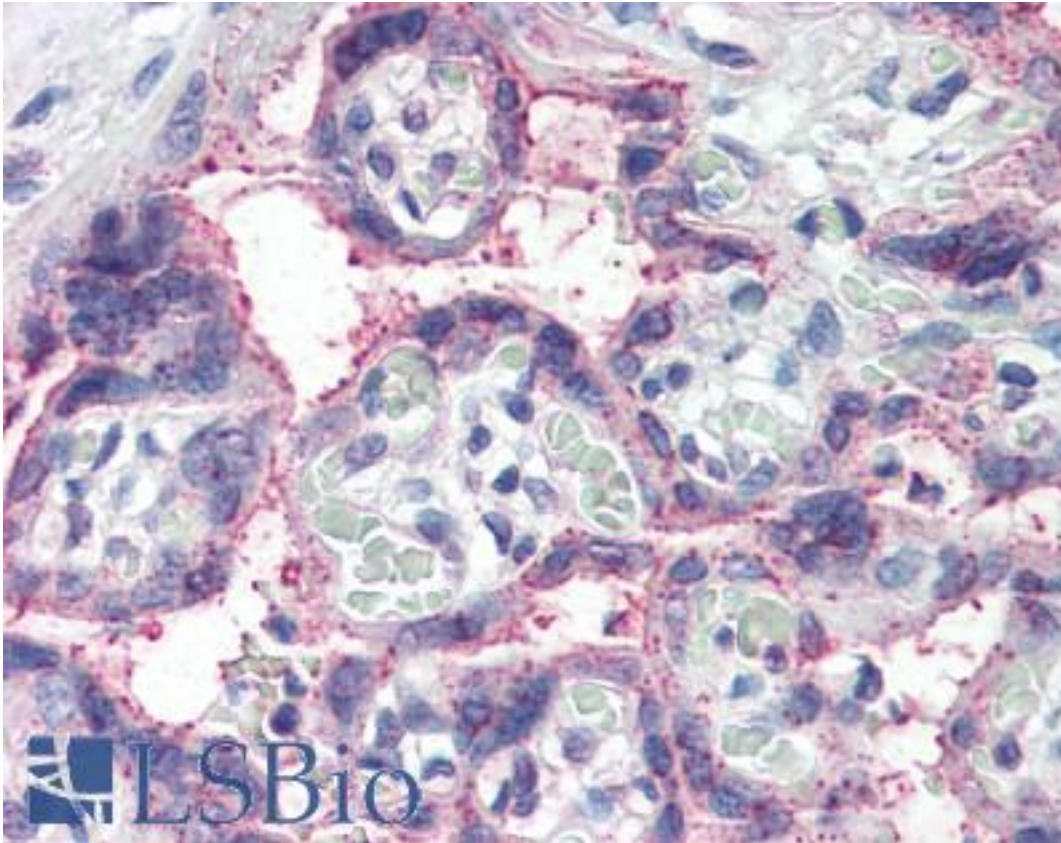


NOTCH3 Goat anti-Human Polyclonal (C-Terminus) Antibody - LS-B2379 - LSBio

CatalogID:	LS-B2379
Validation:	This antibody replaces catalog number LS-C55185. It has been validated for use in the following assays: IHC-P.
Target:	notch 3 (NOTCH3)
Synonyms:	NOTCH3 Antibody, CASIL Antibody, CADASIL Antibody, Notch 3 Antibody, Notch (Drosophila) homolog 3 Antibody, Notch homolog 3 Antibody, Notch homolog 3 (Drosophila) Antibody
Family / Subfamily:	Fibronectin / not assigned-Fibronectin
Host	NOTCH3 antibody was produced in Goat
Clonality:	Polyclonal
Immunogen Species:	NOTCH3 antibody was raised against Human
Antigen Type:	Synthetic peptide
Immunogen:	NOTCH3 antibody was raised against synthetic peptide C-QLGPQPEVTPKRQ from the C-terminus of human NOTCH3 (NP_000426.2). Percent identity by BLAST analysis: Human, Gorilla, Monkey, Marmoset, Mouse, Rat, Panda, Bat (100%); Hamster, Bovine (92%); Elephant (85%).
Specificity:	Human NOTCH3.
Epitope:	C-Terminus
Reactivity:	Human, Gorilla, Monkey, Mouse, Rat, Bat
Predicted Reactivity:	Bovine, Hamster
Purification:	Immunoaffinity purified
Presentation:	Tris-buffered saline, pH 7.3, 0.5% BSA, 0.02% sodium azide
Recommended Storage:	Store at -20°C. Minimize freezing and thawing.
Usage Summary:	Immunohistochemistry: LS-B2379 was validated for use in immunohistochemistry on a panel of 21 formalin-fixed, paraffin-embedded (FFPE) human tissues after heat induced antigen retrieval in pH 6.0 citrate buffer. After incubation with the primary antibody, slides were incubated with biotinylated secondary antibody, followed by alkaline phosphatase-streptavidin and chromogen. The stained slides were evaluated by a pathologist to confirm staining specificity. The optimal working concentration for LS-B2379 was determined to be 5 ug/ml.
Uses:	IHC - Paraffin (5 µg/ml), ELISA (1:16000) (Optimal dilution to be determined by the researcher)
Size:	50 µg
Concentration:	0.5 mg/ml

Immunohistochemistry Image:



Anti-NOTCH3 antibody IHC of human placenta. Immunohistochemistry of formalin-fixed, paraffin-embedded tissue after heat-induced antigen retrieval. Antibody LS-B2379 concentration 5 ug/ml.

Requested From:

Japan

Laboratory Reagent For In Vitro Research Use Only

Not for resale without prior written consent from LifeSpan BioSciences, Inc.

Created on 9/23/2014

© 2014 LifeSpan BioSciences