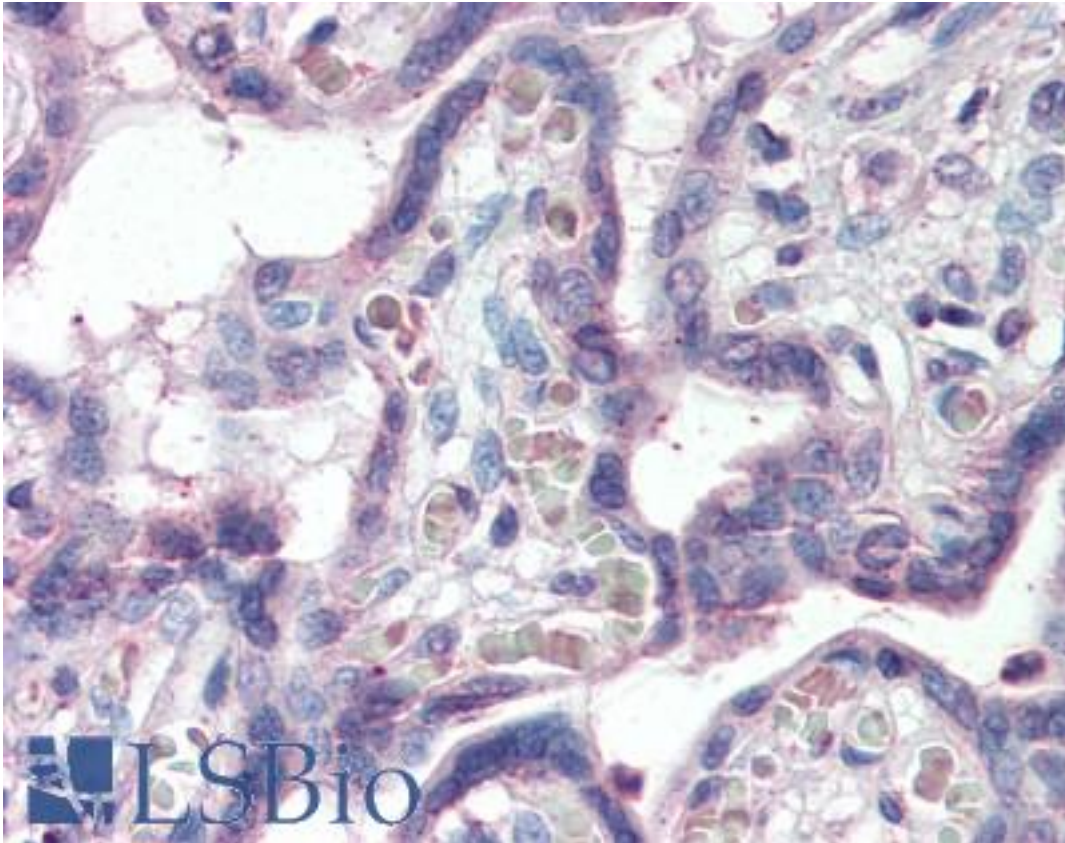


SLC12A4 / KCC1 Goat anti-Human Polyclonal (Internal) Antibody - LS-B2377 - LSBio	
CatalogID:	LS-B2377
Validation:	This antibody replaces catalog number LS-C55024. It has been validated for use in the following assays: IHC-P.
Target:	solute carrier family 12 (potassium/chloride transporter), member 4 (SLC12A4)
Synonyms:	SLC12A4 Antibody, Erythroid K-Cl cotransporter 1 Antibody, HKCC1 Antibody, KCC1 Antibody, K-Cl cotransporter Antibody, Erythroid K:Cl cotransporter Antibody
Family / Subfamily:	Transporter / Cation:chloride symporter
Host	SLC12A4 antibody was produced in Goat
Clonality:	Polyclonal
Immunogen Species:	SLC12A4 / KCC1 antibody was raised against Human
Antigen Type:	Synthetic peptide
Immunogen:	SLC12A4 / KCC1 antibody was raised against synthetic peptide C-DPSHAPDNFRE from an internal region of human SLC12A4 (NP_005063.1). Percent identity by BLAST analysis: Human, Gorilla, Gibbon, Monkey, Mouse, Rat, Hamster, Elephant, Dog, Bat (100%); Marmoset, Panda, Bovine, Rabbit, Horse (91%).
Specificity:	Human SLC12A4.
Epitope:	Internal
Reactivity:	Human, Gorilla, Gibbon, Mouse, Rat, Bat, Dog, Hamster
Predicted Reactivity:	Monkey, Bovine, Horse, Rabbit
Purification:	Immunoaffinity purified
Presentation:	Tris-buffered saline, pH 7.3, 0.5% BSA, 0.02% sodium azide
Recommended Storage:	Store at -20°C. Minimize freezing and thawing.
Usage Summary:	Immunohistochemistry: LS-B2377 was validated for use in immunohistochemistry on a panel of 21 formalin-fixed, paraffin-embedded (FFPE) human tissues after heat induced antigen retrieval in pH 6.0 citrate buffer. After incubation with the primary antibody, slides were incubated with biotinylated secondary antibody, followed by alkaline phosphatase-streptavidin and chromogen. The stained slides were evaluated by a pathologist to confirm staining specificity. The optimal working concentration for LS-B2377 was determined to be 5 ug/ml.
Uses:	IHC - Paraffin (5 µg/ml), Western blot (0.3 - 1 µg/ml), ELISA (1:4000) (Optimal dilution to be determined by the researcher)
Size:	50 µg
Concentration:	0.5 mg/ml

Immunohistochemistry Image:



Anti-SLC12A4 antibody IHC of human placenta. Immunohistochemistry of formalin-fixed, paraffin-embedded tissue after heat-induced antigen retrieval. Antibody LS-B2377 concentration 5 ug/ml.

Western Blot Image:



Antibody (0.3 ug/ml) staining of Human Heart lysate (35 ug protein in RIPA buffer). Primary incubation was 1 hour. Detected by chemiluminescence.

Requested From:

Japan

Laboratory Reagent For In Vitro Research Use Only

Not for resale without prior written consent from LifeSpan BioSciences, Inc.

Created on 9/23/2014

© 2014 LifeSpan BioSciences