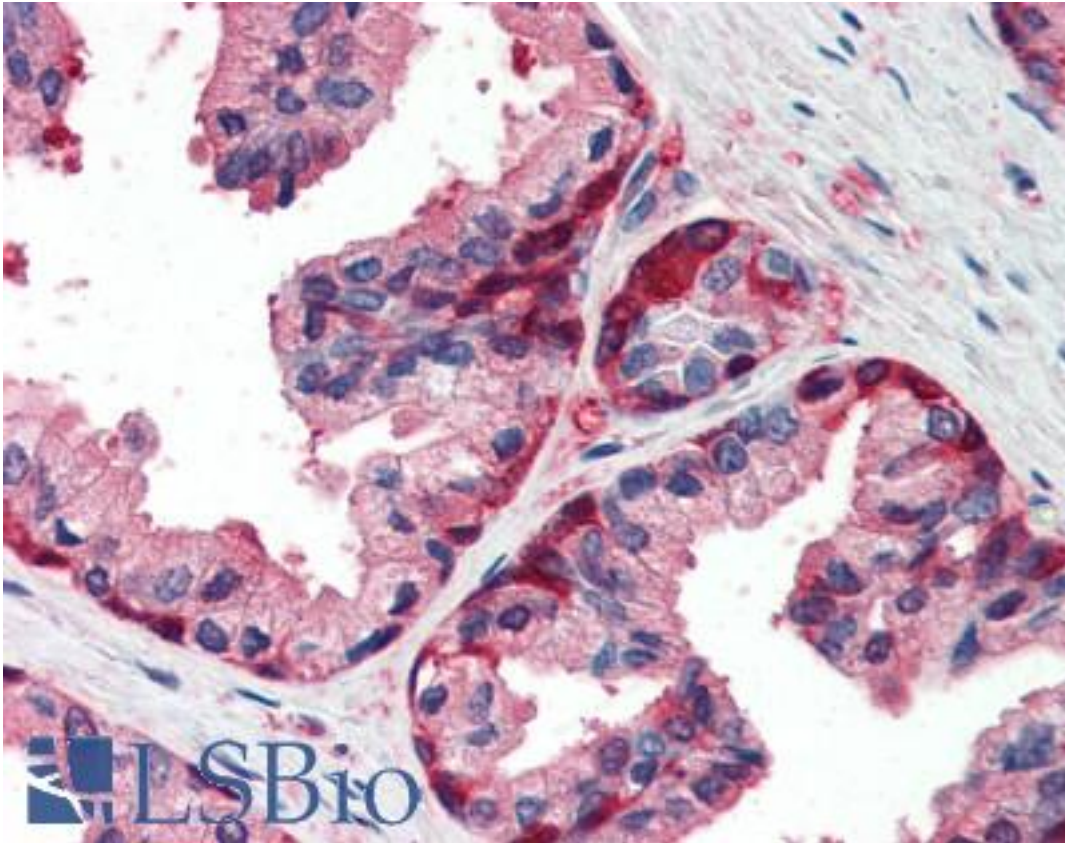


GSTP1 / GST Pi Goat anti-Human Polyclonal (Internal) Antibody - LS-B2376 - LSBio

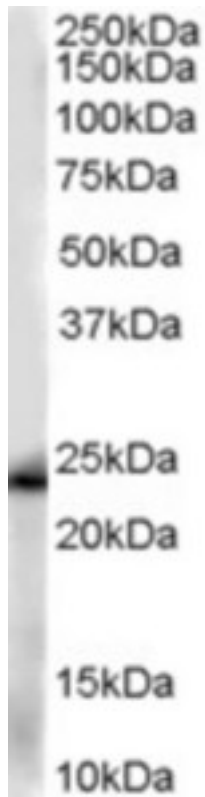
<b>CatalogID:</b>	LS-B2376
<b>Validation:</b>	This antibody replaces catalog number LS-C54948. It has been validated for use in the following assays: IHC-P.
<b>Target:</b>	glutathione S-transferase pi 1 (GSTP1)
<b>Synonyms:</b>	GSTP1 Antibody, Deafness, X-linked 7 Antibody, DFN7 Antibody, GSTP1-1 Antibody, Glutathione S-transferase P Antibody, GST Pi Antibody, GSTP Antibody, FAES3 Antibody, Glutathione S-transferase pi 1 Antibody, GST class-pi Antibody, GST3 Antibody, PI Antibody
<b>Host</b>	GSTP1 antibody was produced in Goat
<b>Clonality:</b>	Polyclonal
<b>Immunogen Species:</b>	GSTP1 / GST Pi antibody was raised against Human
<b>Antigen Type:</b>	Synthetic peptide
<b>Immunogen:</b>	GSTP1 / GST Pi antibody was raised against synthetic peptide C-LADQGQSWKEEV from an internal region of human GSTP1 (NP_000843.1). Percent identity by BLAST analysis: Human, Gorilla, Orangutan, Gibbon, Monkey, Marmoset, Mouse, Rat, Hamster, Panda, Dog, Bat, Bovine, Horse, Pig (100%); Goat, Elephant (92%); Pike (83%).
<b>Specificity:</b>	Human GSTP1.
<b>Epitope:</b>	Internal
<b>Reactivity:</b>	Human, Gorilla, Orangutan, Gibbon, Monkey, Mouse, Rat, Bat, Bovine, Dog, Hamster, Horse, Pig
<b>Predicted Reactivity:</b>	Goat
<b>Purification:</b>	Immunoaffinity purified
<b>Presentation:</b>	Tris-buffered saline, pH 7.3, 0.5% BSA, 0.02% sodium azide
<b>Recommended Storage:</b>	Store at -20°C. Minimize freezing and thawing.
<b>Usage Summary:</b>	Immunohistochemistry: LS-B2376 was validated for use in immunohistochemistry on a panel of 21 formalin-fixed, paraffin-embedded (FFPE) human tissues after heat induced antigen retrieval in pH 6.0 citrate buffer. After incubation with the primary antibody, slides were incubated with biotinylated secondary antibody, followed by alkaline phosphatase-streptavidin and chromogen. The stained slides were evaluated by a pathologist to confirm staining specificity. The optimal working concentration for LS-B2376 was determined to be 5 ug/ml.
<b>Uses:</b>	IHC - Paraffin (5 µg/ml), Western blot (0.01 - 0.03 µg/ml), ELISA (1:32000) (Optimal dilution to be determined by the researcher)
<b>Size:</b>	50 µg
<b>Concentration:</b>	0.5 mg/ml

**Immunohistochemistry Image:**



Anti-GSTP1 antibody IHC of human prostate. Immunohistochemistry of formalin-fixed, paraffin-embedded tissue after heat-induced antigen retrieval. Antibody LS-B2376 concentration 5 ug/ml.

**Western Blot Image:**



Antibody (0.01 ug/ml) staining of human kidney lysate (35 ug protein in RIPA buffer). Primary incubation was 1 hour. Detected by chemiluminescence.

**Requested From:**

Japan

Laboratory Reagent For In Vitro Research Use Only

Not for resale without prior written consent from LifeSpan BioSciences, Inc.

Created on 9/23/2014

© 2014 LifeSpan BioSciences