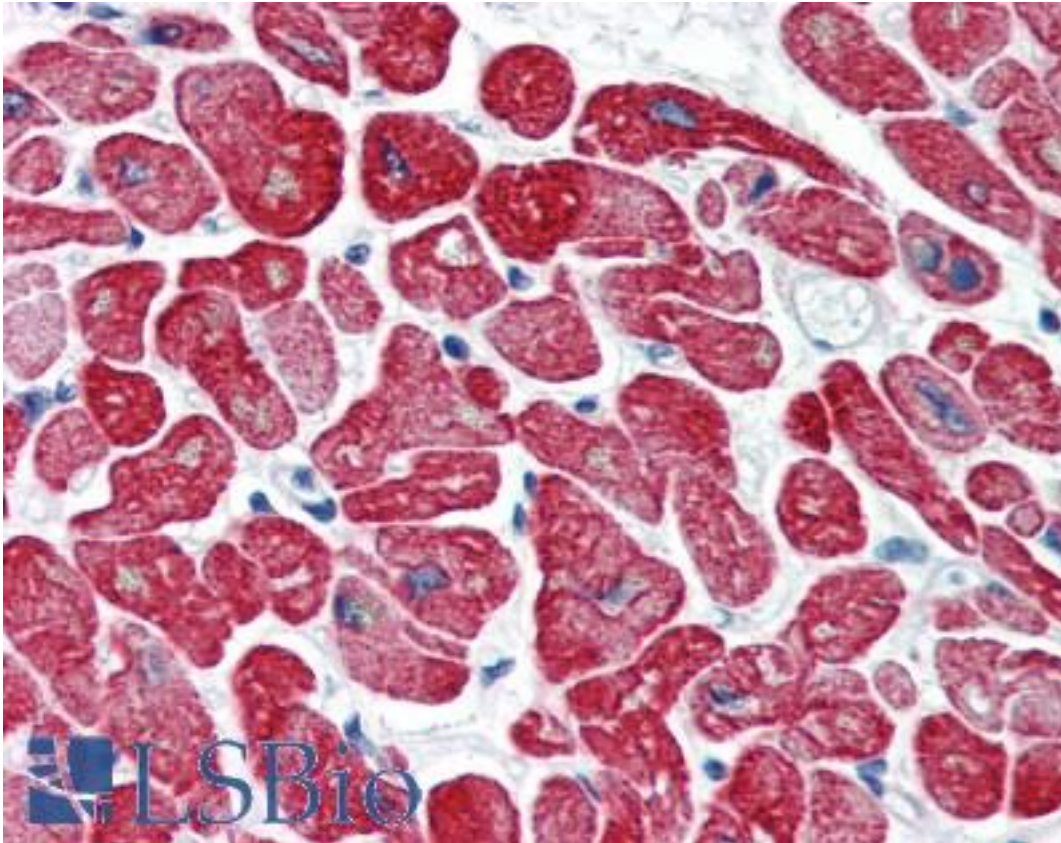


Tropomyosin Mouse anti-Chicken Monoclonal Antibody - LS-B2373 - LSBio

| | |
|-----------------------------|---|
| CatalogID: | LS-B2373 |
| Validation: | This antibody replaces catalog number LS-C39862. It has been validated for use in the following assays: IHC-P. |
| Target: | Tropomyosin |
| Host | Tropomyosin antibody was produced in Mouse |
| Clonality: | Monoclonal |
| Isotype: | IgG1,k |
| Immunogen Species: | Tropomyosin antibody was raised against Chicken |
| Immunogen: | Tropomyosin antibody was raised against tropomyosin protein purified from chicken embryo fibroblasts (CEF) and chicken leg, heart, and gizzard. |
| Specificity: | Recognizes chicken Tropomyosin. Reacts strongly with striated muscle forms of tropomyosin, including cardiac alpha- tropomyosin and skeletal alpha-and beta-tropomyosins. Species cross-reactivity: human and rat. |
| Reactivity: | Chicken, Human, Rat |
| Purification: | Protein G purified |
| Presentation: | 10 mM PBS, pH 7.4, 0.2% BSA, 0.09% sodium azide. |
| Recommended Storage: | +4°C or -20°C, Avoid repeated freezing and thawing. |
| Usage Summary: | Immunohistochemistry: LS-B2373 was validated for use in immunohistochemistry on a panel of 21 formalin-fixed, paraffin-embedded (FFPE) human tissues after heat induced antigen retrieval in pH 6.0 citrate buffer. After incubation with the primary antibody, slides were incubated with biotinylated secondary antibody, followed by alkaline phosphatase-streptavidin and chromogen. The stained slides were evaluated by a pathologist to confirm staining specificity. The optimal working concentration for LS-B2373 was determined to be 5 ug/ml. |
| Uses: | IHC - Paraffin (5 µg/ml), Immunofluorescence (Optimal dilution to be determined by the researcher) |
| Size: | 50 µl |

Immunohistochemistry Image:



Anti-Tropomyosin antibody IHC of human heart. Immunohistochemistry of formalin-fixed, paraffin-embedded tissue after heat-induced antigen retrieval. Antibody LS-B2373 concentration 5 ug/ml.

Requested From:

Japan

Laboratory Reagent For In Vitro Research Use Only

Not for resale without prior written consent from LifeSpan BioSciences, Inc.

Created on 9/23/2014

© 2014 LifeSpan BioSciences