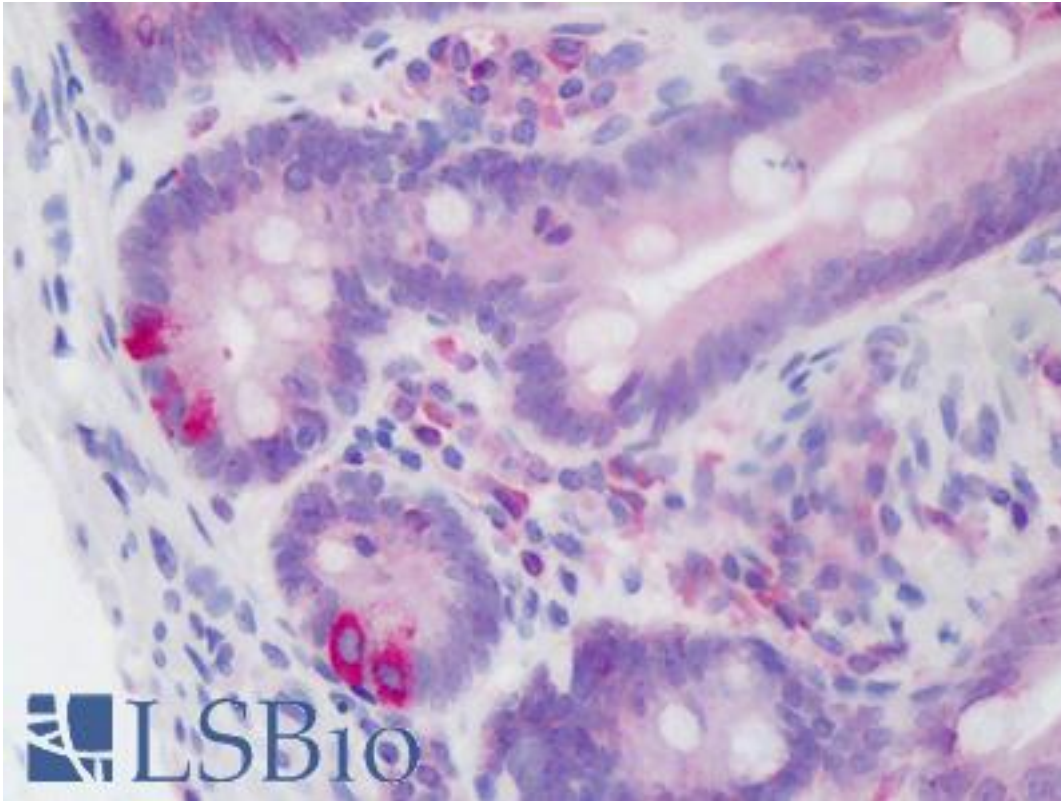


PDI / P4HB Rabbit anti-Human Polyclonal Antibody - LS-B2372 - LSBio	
CatalogID:	LS-B2372
Validation:	This antibody replaces catalog number LS-C38114. It has been validated for use in the following assays: IHC-P.
Target:	prolyl 4-hydroxylase, beta polypeptide (P4HB)
Synonyms:	P4HB Antibody, ERBA2L Antibody, DSI Antibody, GIT Antibody, p4HB Antibody, p4Hbeta Antibody, PDIA1 Antibody, PHDB Antibody, PO4DB Antibody, PROHB Antibody, Protocollagen hydroxylase Antibody, Protein disulfide-isomerase Antibody, PO4HB Antibody, PDI Antibody
Host	P4HB antibody was produced in Rabbit
Clonality:	Polyclonal
Isotype:	IgG
Immunogen Species:	PDI / P4HB antibody was raised against Human
Antigen Type:	Synthetic peptide
Immunogen:	PDI / P4HB antibody was raised against synthetic peptide derived from the sequence around Pro329 of human PDI (KLH).
Specificity:	Recognizes endogenous levels of total human PDI protein. Species cross-reactivity: monkey, mouse and rat.
Reactivity:	Human
Purification:	Immunoaffinity purified
Presentation:	Supplied as a liquid in 10 mM sodium HEPES, pH 7.5, 150 mM sodium chloride, 0.1 mg/ml BSA, 50% glycerol.
Recommended Storage:	Long term: -20°C; Short term: +4°C. Avoid repeat freeze-thaw cycles.
Usage Summary:	Immunohistochemistry: LS-B2372 was validated for use in immunohistochemistry on a panel of 21 formalin-fixed, paraffin-embedded (FFPE) human tissues after heat induced antigen retrieval in pH 6.0 citrate buffer. After incubation with the primary antibody, slides were incubated with biotinylated secondary antibody, followed by alkaline phosphatase-streptavidin and chromogen. The stained slides were evaluated by a pathologist to confirm staining specificity. The optimal working concentration for LS-B2372 was determined to be 1:50. Immunofluorescence (IF-IC): 1:25. Requires methanol permeabilization.
Uses:	IHC - Paraffin (1:50), ICC (1:50), Immunofluorescence (1:50), Western blot (1:1000) (Optimal dilution to be determined by the researcher)
Size:	50 µl

Immunohistochemistry Image:



Anti-P4HB antibody IHC of human small intestine. Immunohistochemistry of formalin-fixed, paraffin-embedded tissue after heat-induced antigen retrieval. Antibody LS-B2372 dilution 1:50.

Requested From:

Japan

Laboratory Reagent For In Vitro Research Use Only

Not for resale without prior written consent from LifeSpan BioSciences, Inc.

Created on 9/23/2014

© 2014 LifeSpan BioSciences