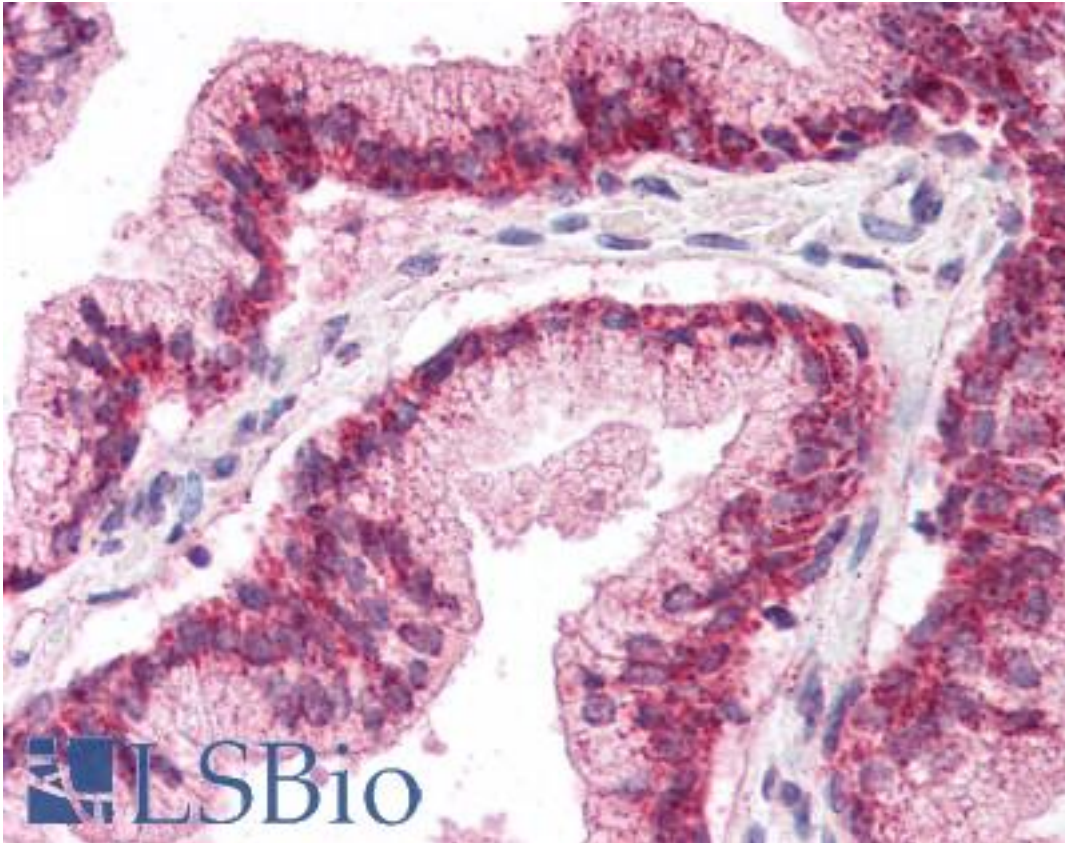


LHX2 Rabbit anti-Human Polyclonal (aa239-254) Antibody - LS-B2361 - LSBio

CatalogID:	LS-B2361
Validation:	This antibody replaces catalog number LS-C8480. It has been validated for use in the following assays: IHC-P.
Target:	LIM homeobox 2 (LHX2)
Synonyms:	LHX2 Antibody, Homeobox protein LH-2 Antibody, LH-2 Antibody, LIM homeobox protein 2 Antibody, LIM/homeobox protein Lhx2 Antibody, HLhx2 Antibody, LIM homeobox 2 Antibody, LH2 Antibody, LIM HOX gene 2 Antibody
Host	LHX2 antibody was produced in Rabbit
Clonality:	Polyclonal
Isotype:	IgG
Immunogen Species:	LHX2 antibody was raised against Human
Antigen Type:	Synthetic peptide
Immunogen:	LHX2 antibody was raised against synthetic peptide corresponding to aa239-254 of human LHX2/Lim2.
Specificity:	Recognizes the human Lim homeobox containing transcription factor LHX2. No significant sequence homology with other proteins. Species cross-reactivity: rodent.
Epitope:	aa239-254
Reactivity:	Human
Purification:	Affinity purified
Presentation:	PBS, pH 7.4. No preservative added.
Recommended Storage:	Long term: -20°C; Short term: +4°C. Avoid repeat freeze-thaw cycles.
Usage Summary:	Immunohistochemistry: LS-B2361 was validated for use in immunohistochemistry on a panel of 21 formalin-fixed, paraffin-embedded (FFPE) human tissues after heat induced antigen retrieval in pH 6.0 citrate buffer. After incubation with the primary antibody, slides were incubated with biotinylated secondary antibody, followed by alkaline phosphatase-streptavidin and chromogen. The stained slides were evaluated by a pathologist to confirm staining specificity. The optimal working concentration for LS-B2361 was determined to be 5 ug/ml.
Uses:	IHC - Paraffin (5 µg/ml), IHC - Frozen (1:200 - 1:1000), ELISA (Optimal dilution to be determined by the researcher)
Size:	50 µg
Concentration:	1 mg/ml

Immunohistochemistry Image:



Anti-LHX2 antibody IHC of human prostate. Immunohistochemistry of formalin-fixed, paraffin-embedded tissue after heat-induced antigen retrieval. Antibody LS-B2361 concentration 5 ug/ml.

Requested From:

Japan

Laboratory Reagent For In Vitro Research Use Only

Not for resale without prior written consent from LifeSpan BioSciences, Inc.

Created on 9/23/2014

© 2014 LifeSpan BioSciences