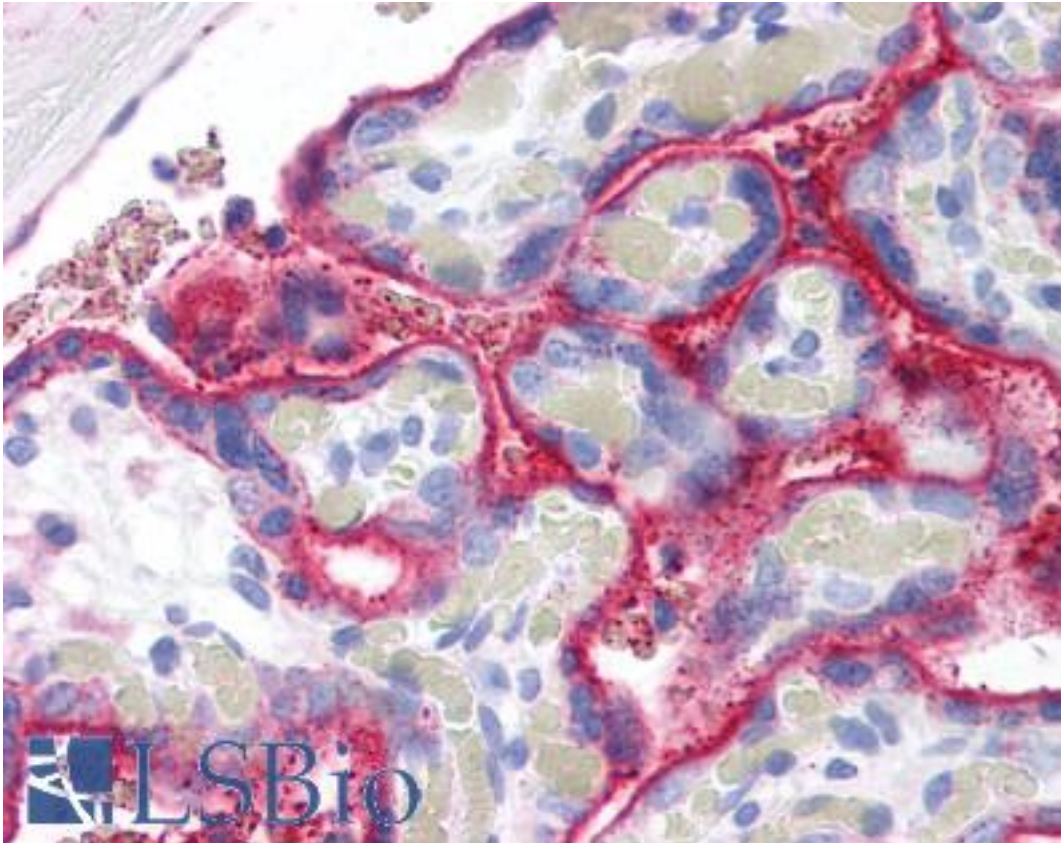


CD59 Mouse anti-Human Monoclonal (Low Endotoxin) Antibody - LS-B2359 - LSBio	
<b>CatalogID:</b>	LS-B2359
<b>Validation:</b>	This antibody replaces catalog number LS-C5420. It has been validated for use in the following assays: IHC-P.
<b>Target:</b>	CD59 molecule, complement regulatory protein
<b>Synonyms:</b>	CD59 Antibody, 16.3A5 Antibody, 1F5 Antibody, 1F5 antigen Antibody, CD59 glycoprotein Antibody, EL32 Antibody, EJ16 Antibody, G344 Antibody, HRF-20 Antibody, MAC-IP Antibody, MACIF Antibody, Ly-6-like protein Antibody, MEM43 Antibody, MIRC Antibody, MEM43 antigen Antibody, MIN2 Antibody, MIN3 Antibody, MSK21 Antibody, p18-20 Antibody, Protectin Antibody, MAC-inhibitory protein Antibody, MIC11 Antibody, T cell-activating protein Antibody, CD59 antigen Antibody, EJ30 Antibody, HRF20 Antibody, Human leukocyte antigen MIC11 Antibody, Lymphocytic antigen CD59/MEM43 Antibody, MIN1 Antibody
<b>Host</b>	CD59 antibody was produced in Mouse
<b>Clonality:</b>	Monoclonal
<b>Isotype:</b>	IgG2a
<b>Modifications:</b>	Low Endotoxin
<b>Immunogen Species:</b>	CD59 antibody was raised against Human
<b>Specificity:</b>	Recognizes human CD59. Reacts with well defined epitope (W40, R-53) on human CD59 molecule.
<b>Reactivity:</b>	Human
<b>Purification:</b>	Purified
<b>Presentation:</b>	PBS, 0.1% BSA, low endotoxin level.
<b>Recommended Storage:</b>	Long term: Add glycerol (40-50%) -20°C; Short term: +4°C
<b>Usage Summary:</b>	Immunohistochemistry: LS-B2359 was validated for use in immunohistochemistry on a panel of 21 formalin-fixed, paraffin-embedded (FFPE) human tissues after heat induced antigen retrieval in pH 6.0 citrate buffer. After incubation with the primary antibody, slides were incubated with biotinylated secondary antibody, followed by alkaline phosphatase-streptavidin and chromogen. The stained slides were evaluated by a pathologist to confirm staining specificity. The optimal working concentration for LS-B2359 was determined to be 5 ug/ml. Western Blot: non-reducing.
<b>Uses:</b>	IHC - Paraffin (5 µg/ml), Western blot (1:10), Immunoprecipitation, Flow Cytometry (Optimal dilution to be determined by the researcher)
<b>Size:</b>	50 µg

**Immunohistochemistry Image:**



Anti-CD59 antibody IHC of human placenta. Immunohistochemistry of formalin-fixed, paraffin-embedded tissue after heat-induced antigen retrieval. Antibody LS-B2359 concentration 5 ug/ml.

**Requested From:**

Japan

Laboratory Reagent For In Vitro Research Use Only

Not for resale without prior written consent from LifeSpan BioSciences, Inc.

Created on 9/23/2014

© 2014 LifeSpan BioSciences