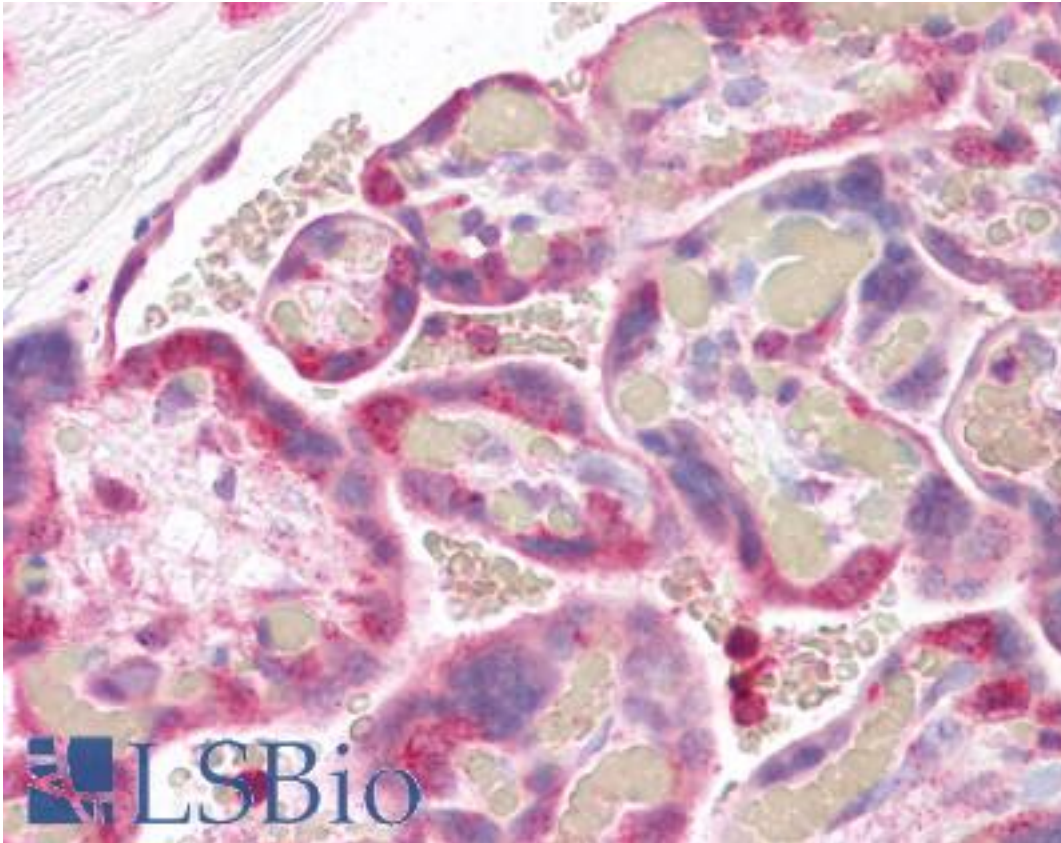


STXBP2 Rabbit anti-Human Polyclonal (aa58-70) Antibody - LS-B2356 - LSBio

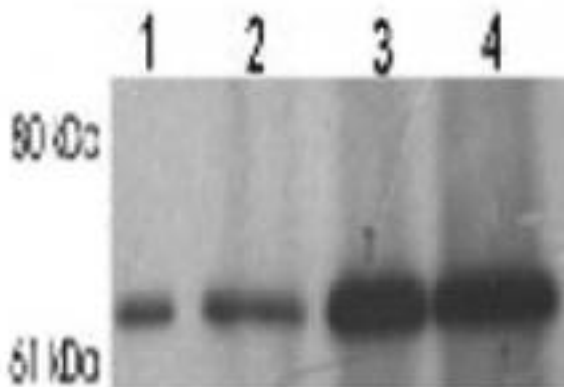
CatalogID:	LS-B2356
Validation:	This antibody replaces catalog number LS-C25383. It has been validated for use in the following assays: IHC-P.
Target:	syntaxin binding protein 2 (STXBP2)
Synonyms:	STXBP2 Antibody, Hunc18b Antibody, MUNC18-2 Antibody, Protein unc-18 homolog B Antibody, UNC18B Antibody, Pp10122 Antibody, Syntaxin binding protein 2 Antibody, Syntaxin-binding protein 2 Antibody, Protein unc-18 homolog 2 Antibody, Unc-18B Antibody, UNC18-2 Antibody
Host	STXBP2 antibody was produced in Rabbit
Clonality:	Polyclonal
Immunogen Species:	STXBP2 antibody was raised against Human
Antigen Type:	Synthetic peptide
Immunogen:	STXBP2 antibody was raised against synthetic peptide corresponding to aa 58-70 (V58EDINKRREPIPS70) of human Munc-18. Percent identity by BLAST analysis: Human, Gorilla, Orangutan, Gibbon, Monkey, Marmoset, Mouse, Rat, Hamster, Elephant, Panda, Bovine, Dog, Horse, Pig, Opossum, Platypus, Xenopus (100%); Rabbit, Turkey, Chicken, Salmon, Stickleback, Pufferfish, Zebrafish, Eye worm, Nematode (92%); Lizard (85%).
Specificity:	Recognizes human Munc at ~67kD by Western Blot. Species cross-reactivity: mouse and rat.
Epitope:	aa58-70
Reactivity:	Human, Gorilla, Orangutan, Gibbon, Monkey, Mouse, Rat, Bovine, Dog, Hamster, Horse, Pig, Xenopus
Predicted Reactivity:	Rabbit, Chicken, Zebrafish
Purification:	Immunoaffinity purified
Presentation:	PBS, 1 mg/ml BSA, 0.05% sodium azide.
Recommended Storage:	+4°C or -20°C, Avoid repeated freezing and thawing.
Usage Summary:	Immunohistochemistry: LS-B2356 was validated for use in immunohistochemistry on a panel of 21 formalin-fixed, paraffin-embedded (FFPE) human tissues after heat induced antigen retrieval in pH 6.0 citrate buffer. After incubation with the primary antibody, slides were incubated with biotinylated secondary antibody, followed by alkaline phosphatase-streptavidin and chromogen. The stained slides were evaluated by a pathologist to confirm staining specificity. The optimal working concentration for LS-B2356 was determined to be 2.5 ug/ml.
Uses:	IHC - Paraffin (2.5 µg/ml), Western blot, Immunoprecipitation (Optimal dilution to be determined by the researcher)
Size:	50 µg
Concentration:	1 mg/ml

Immunohistochemistry Image:



Anti-STXBP2 antibody IHC of human placenta. Immunohistochemistry of formalin-fixed, paraffin-embedded tissue after heat-induced antigen retrieval. Antibody LS-B2356 concentration 5 ug/ml.

Western Blot Image:



Western blot analysis for Munc18 in 750 ug rat brain homogenate immunoprecipitated with 1 ug, 5 ug, and 10 ug of (lanes 2-4) of LS-B2356 (lane 1: extract only).

Requested From:

Japan

Laboratory Reagent For In Vitro Research Use Only

Not for resale without prior written consent from LifeSpan BioSciences, Inc.

Created on 9/23/2014

© 2014 LifeSpan BioSciences