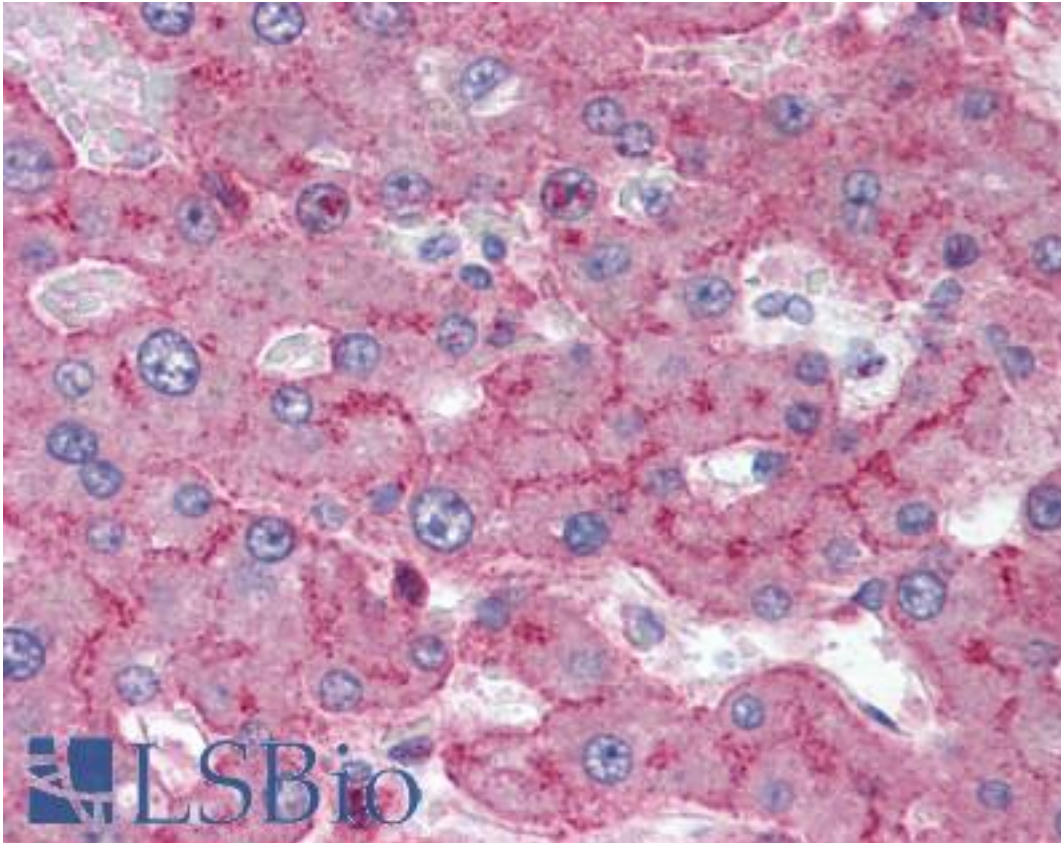


LRP1 / CD91 Mouse anti-Human Monoclonal Antibody - LS-B2342 - LSBio

CatalogID:	LS-B2342
Validation:	This antibody replaces catalog number LS-C14024. It has been validated for use in the following assays: IHC-P.
Target:	low density lipoprotein receptor-related protein 1 (LRP1)
Synonyms:	LRP1 Antibody, Apolipoprotein E receptor Antibody, CD91 antigen Antibody, CD91 Antibody, A2MR Antibody, IGFBP3R Antibody, Alpha-2-macroglobulin receptor Antibody, TGFBR5 Antibody, Type V tgf-beta receptor Antibody, APOER Antibody, APR Antibody, LRP Antibody, LRP-1 Antibody
Host	LRP1 antibody was produced in Mouse
Clonality:	Monoclonal
Isotype:	IgG1
Immunogen Species:	LRP1 / CD91 antibody was raised against Human
Immunogen:	LRP1 / CD91 antibody was raised against purified alpha 2 macroglobulin receptor.
Specificity:	Recognizes human CD91, a type I membrane protein which is also known as the alpha 2 macroglobulin receptor (alpha 2 MR). Recognizes an epitope in the extracellular region of the 500kD alpha chain.
Reactivity:	Human
Purification:	Protein G purified
Presentation:	PBS, pH 7.4, 0.09% sodium azide.
Recommended Storage:	Long term: Add glycerol (40-50%) -20°C; Short term: +4°C
Usage Summary:	Immunohistochemistry: LS-B2342 was validated for use in immunohistochemistry on a panel of 21 formalin-fixed, paraffin-embedded (FFPE) human tissues after heat induced antigen retrieval in pH 6.0 citrate buffer. After incubation with the primary antibody, slides were incubated with biotinylated secondary antibody, followed by alkaline phosphatase-streptavidin and chromogen. The stained slides were evaluated by a pathologist to confirm staining specificity. The optimal working concentration for LS-B2342 was determined to be 5-10 ug/ml. Flow Cytometry: 1:50-1:100. Use 10 ul to label 10 ⁶ cells in 100 ul. Western Blot: non-reducing conditions. Positive control: Liver.
Uses:	IHC - Paraffin (5 - 10 µg/ml), IHC - Frozen, Western blot, Immunoprecipitation, Flow Cytometry, ELISA (Optimal dilution to be determined by the researcher)
Size:	50 µg
Concentration:	1 mg/ml

Immunohistochemistry Image:



Anti-LRP1 / Low Density LRP antibody IHC of human liver. Immunohistochemistry of formalin-fixed, paraffin-embedded tissue after heat-induced antigen retrieval. Antibody LS-B2342 concentration 10 ug/ml.

Requested From:

Japan

Laboratory Reagent For In Vitro Research Use Only

Not for resale without prior written consent from LifeSpan BioSciences, Inc.

Created on 9/23/2014

© 2014 LifeSpan BioSciences