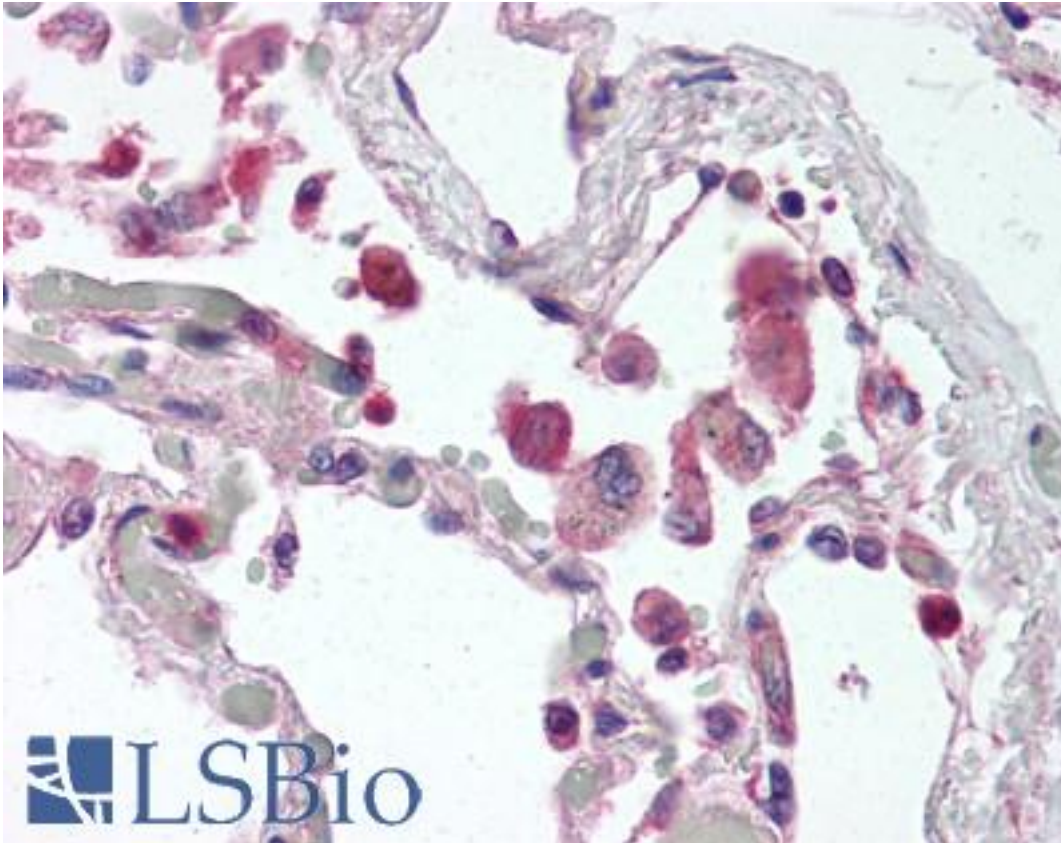


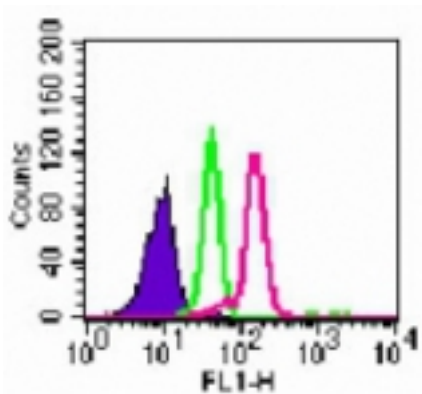
TLR9 Mouse anti-Human Monoclonal (aa268-284) (26C593.2) Antibody - LS-B2341 - LSBio	
CatalogID:	LS-B2341
Validation:	This antibody replaces catalog number LS-C550. It has been validated for use in the following assays: IHC-P.
Target:	toll-like receptor 9 (TLR9)
Synonyms:	TLR9 Antibody, CD289 Antibody, CD289 antigen Antibody, Scri2a Antibody, Toll-like receptor 9 Antibody
Family / Subfamily:	Toll-like Receptor / not assigned-Toll-like Receptor
Host	TLR9 antibody was produced in Mouse
Clonality:	Monoclonal
Isotype:	IgG1,k
Clone Name:	26C593.2
Immunogen Species:	TLR9 antibody was raised against Human
Antigen Type:	Synthetic peptide - KLH conjugated
Immunogen:	TLR9 antibody was raised against this antibody was developed against KLH-conjugated synthetic peptide corresponding to amino acids 268-284 (CPRHFPQLHPDTFSHLS) of human TLR9 isoform A (Genbank accession no. AAF78037). Percent identity by BLAST analysis: Human, Gorilla, Orangutan, Gibbon, Monkey (100%); Chimpanzee, Marmoset (94%); Sheep, Goat, Zebu, Bovine, Horse (82%).
Specificity:	KLH-conjugated synthetic peptide corresponding to amino acids 268-284 of human TLR9 isoform A (Genbank accession no. AAF78037).
Epitope:	aa268-284
Reactivity:	Human, Gorilla, Orangutan, Gibbon, Mouse, Rat
Predicted Reactivity:	Chimpanzee, Monkey
Purification:	Protein G purified
Presentation:	PBS, 0.05% BSA, 0.05% sodium azide.
Recommended Storage:	+4°C or -20°C, Avoid repeated freezing and thawing.
Usage Summary:	Immunohistochemistry: LS-B2341 was validated for use in immunohistochemistry on a panel of 21 formalin-fixed, paraffin-embedded (FFPE) human tissues after heat induced antigen retrieval in pH 6.0 citrate buffer. After incubation with the primary antibody, slides were incubated with biotinylated secondary antibody, followed by alkaline phosphatase-streptavidin and chromogen. The stained slides were evaluated by a pathologist to confirm staining specificity. The optimal working concentration for LS-B2341 was determined to be 5 µg/ml.
Uses:	IHC - Paraffin (5 µg/ml), IHC - Frozen (10 - 20 µg/ml), Western blot (1 - 3 µg/ml), Flow Cytometry (Optimal dilution to be determined by the researcher)
Size:	50 µg
Concentration:	0.5 mg/ml

Immunohistochemistry Image:



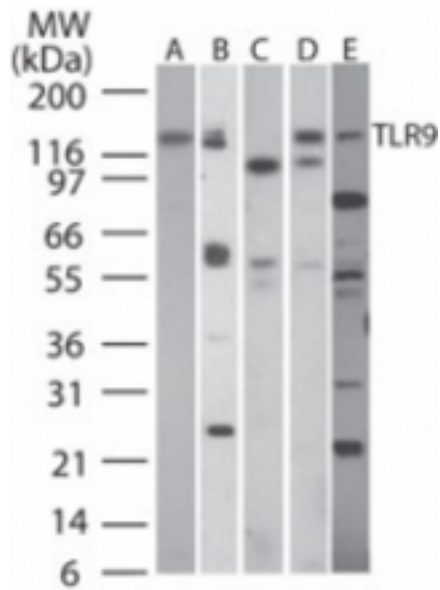
Anti-TLR9 antibody IHC of human lung. Immunohistochemistry of formalin-fixed, paraffin-embedded tissue after heat-induced antigen retrieval. Antibody LS-B2341 concentration 5 ug/ml.

Flow Cytometry Image:



Intracellular flow analysis of TLR9 in Ramos cells using 0.1 ug of antibody. Shaded histogram represents Ramos cells without antibody; green represents isotype control; red represents anti-TLR9 antibody.

Western Blot Image:



Western blot of TLR9 in A) human PBMC, B) human intestine, C) mouse intestine, and D) rat intestine tissue lysates using antibody at a dilution of 3 ug/ml. Lane E shows antibody tested at 5 ug/ml in human MCF7 cell lysate.

Requested From:

Japan

Laboratory Reagent For In Vitro Research Use Only

Not for resale without prior written consent from LifeSpan BioSciences, Inc.

Created on 9/23/2014

© 2014 LifeSpan BioSciences