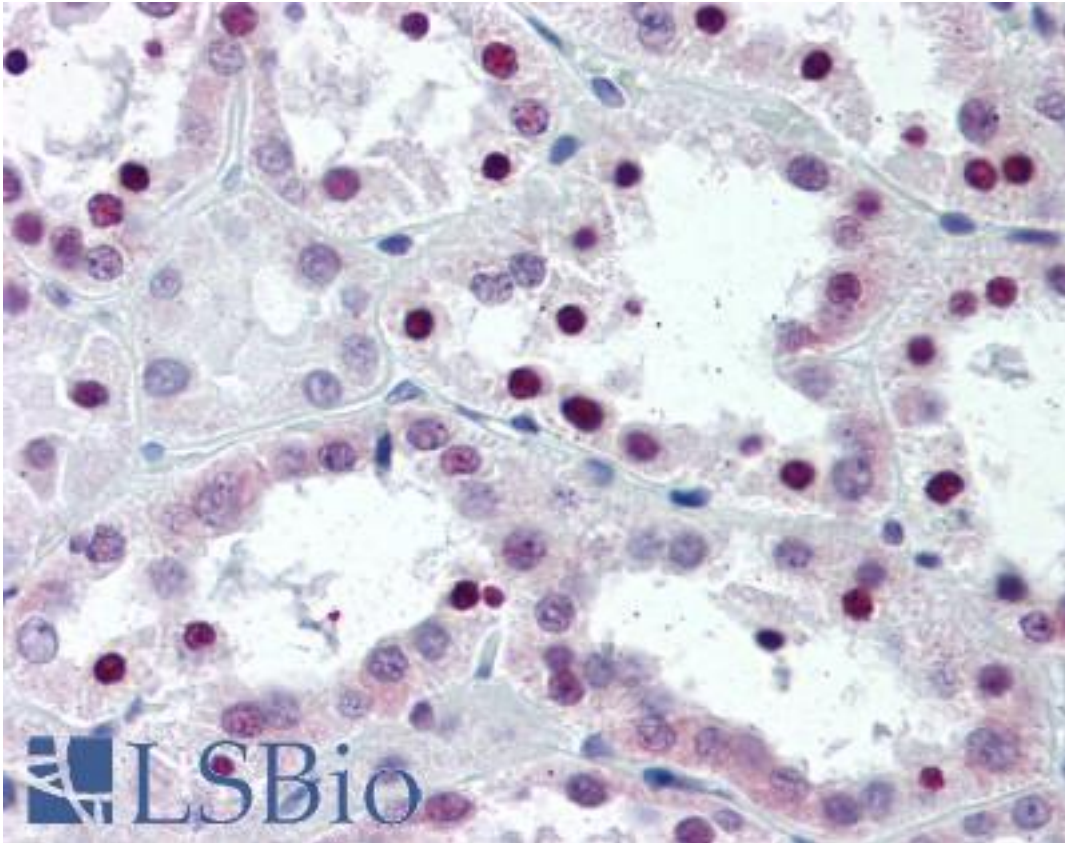


SFRS1 / SF2 Mouse anti-Human Monoclonal (N-Terminus) Antibody - LS-B2340 - LSBio	
<b>CatalogID:</b>	LS-B2340
<b>Validation:</b>	This antibody replaces catalog number LS-C17896. It has been validated for use in the following assays: IHC-P.
<b>Target:</b>	serine/arginine-rich splicing factor 1 (SRSF1)
<b>Synonyms:</b>	SRSF1 Antibody, Alternative-splicing factor 1 Antibody, ASF Antibody, SF2 Antibody, SF2p33 Antibody, SFRS1 Antibody, Splicing factor 2 Antibody, ASF-1 Antibody, SR splicing factor 1 Antibody, SRp30a Antibody
<b>Host</b>	SRSF1 antibody was produced in Mouse
<b>Clonality:</b>	Monoclonal
<b>Isotype:</b>	IgG2b
<b>Immunogen Species:</b>	SFRS1 / SF2 antibody was raised against Human
<b>Antigen Type:</b>	Recombinant protein
<b>Immunogen:</b>	SFRS1 / SF2 antibody was raised against recombinant SF2/ASF protein.
<b>Specificity:</b>	Recognizes the N-terminal portion (aa1-97) of the SF2/ASF protein comprising the RNA-recognition motif (RRM1). Reactivity is not affected by phosphorylation state of SF2/ASF. Species cross-reactivity: Human (HeLa cells), mouse and rat. Cross-reactivity expected with other species because SF2/ASF is highly conserved.
<b>Epitope:</b>	N-Terminus
<b>Reactivity:</b>	Human, Mouse, Rat
<b>Purification:</b>	Protein A purified
<b>Presentation:</b>	PBS, pH 7.4, 0.1% sodium azide.
<b>Recommended Storage:</b>	Long term: -20°C; Short term: +4°C. Avoid repeat freeze-thaw cycles.
<b>Usage Summary:</b>	Immunohistochemistry: LS-B2340 was validated for use in immunohistochemistry on a panel of 21 formalin-fixed, paraffin-embedded (FFPE) human tissues after heat induced antigen retrieval in pH 6.0 citrate buffer. After incubation with the primary antibody, slides were incubated with biotinylated secondary antibody, followed by alkaline phosphatase-streptavidin and chromogen. The stained slides were evaluated by a pathologist to confirm staining specificity. The optimal working concentration for LS-B2340 was determined to be 5 ug/ml.
<b>Uses:</b>	IHC - Paraffin (5 µg/ml), Immunofluorescence, Western blot (0.5 - 1 µg/ml), Immunoprecipitation (Optimal dilution to be determined by the researcher)
<b>Size:</b>	50 µg
<b>Concentration:</b>	0.5 mg/ml

**Immunohistochemistry Image:**



Anti-SF2 antibody IHC of human kidney. Immunohistochemistry of formalin-fixed, paraffin-embedded tissue after heat-induced antigen retrieval. Antibody LS-B2340 concentration 5 ug/ml.

**Requested From:**

Japan

Laboratory Reagent For In Vitro Research Use Only

Not for resale without prior written consent from LifeSpan BioSciences, Inc.

Created on 9/23/2014

© 2014 LifeSpan BioSciences