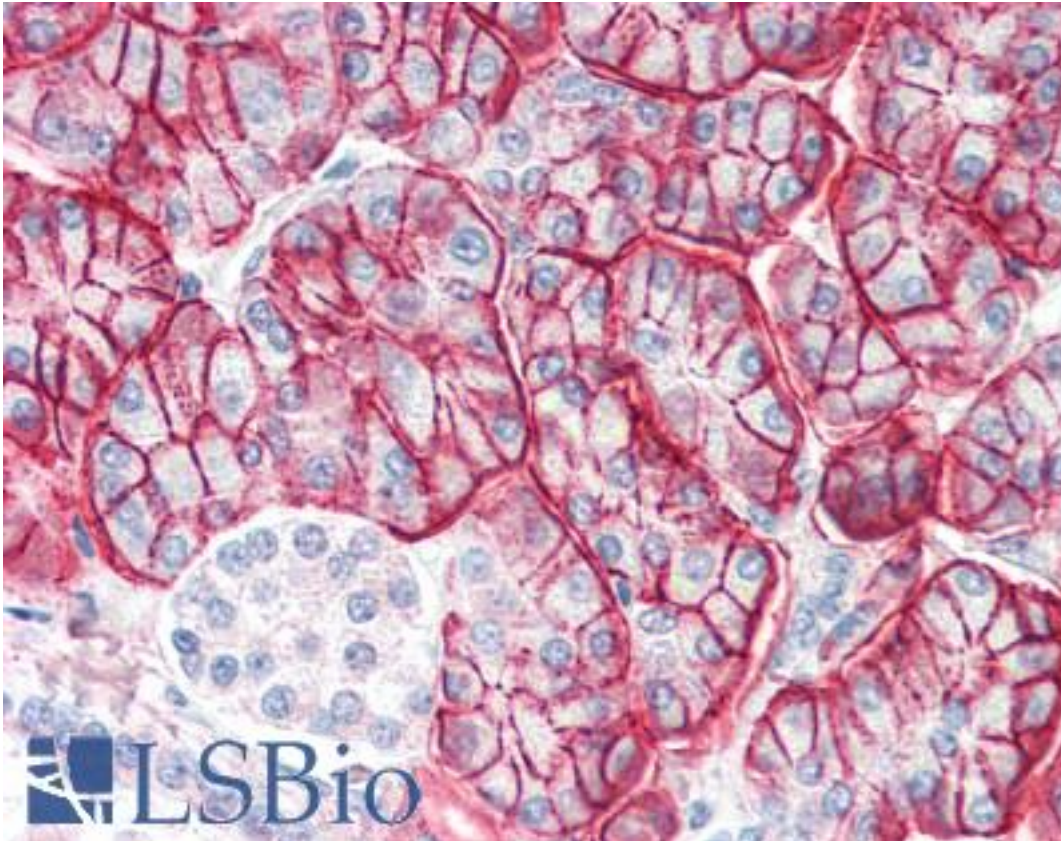


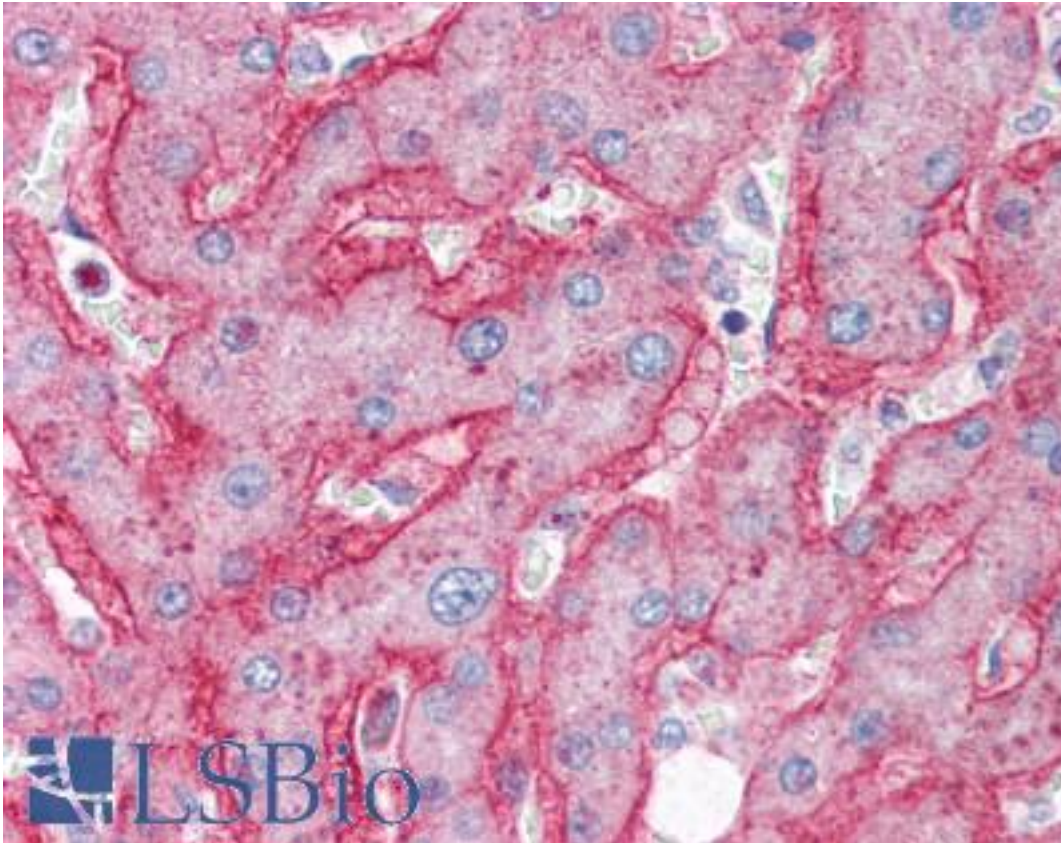
ENPP1 / PC1 Goat anti-Human Polyclonal (C-Terminus) Antibody - LS-B2335 - LSBio	
CatalogID:	LS-B2335
Validation:	This antibody replaces catalog number LS-C54788. It has been validated for use in the following assays: IHC-P.
Target:	ectonucleotide pyrophosphatase/phosphodiesterase 1 (ENPP1)
Synonyms:	ENPP1 Antibody, Alkaline phosphodiesterase I Antibody, ARHR2 Antibody, E-NPP 1 Antibody, Ly-41 antigen Antibody, NPP1 Antibody, NPPS Antibody, PC1 Antibody, PDNP1 Antibody, Alkaline phosphodiesterase 1 Antibody, M6S1 Antibody, PCA1 Antibody, Pc-1 Antibody
Family / Subfamily:	Phosphodiesterase - Other / not assigned-Phosphodiesterase - Other
Host	ENPP1 antibody was produced in Goat
Clonality:	Polyclonal
Immunogen Species:	ENPP1 / PC1 antibody was raised against Human
Antigen Type:	Synthetic peptide
Immunogen:	ENPP1 / PC1 antibody was raised against synthetic peptide C-KTHLPTFSQED from the C-terminus of human ENPP1 (NP_006199.2). Percent identity by BLAST analysis: Human, Gorilla, Gibbon, Baboon, Monkey, Rabbit, Armadillo (100%); Marmoset, Mouse, Rat, Bovine, Hamster, Elephant, Panda (91%); Shrew, Bat, Horse, Opossum, Pufferfish (82%).
Specificity:	Human ENPP1.
Epitope:	C-Terminus
Reactivity:	Human, Gorilla, Gibbon, Rabbit
Predicted Reactivity:	Monkey, Mouse, Rat, Bovine, Hamster
Purification:	Immunoaffinity purified
Presentation:	Tris-buffered saline, pH 7.3, 0.5% BSA, 0.02% sodium azide
Recommended Storage:	Store at -20°C. Minimize freezing and thawing.
Usage Summary:	Immunohistochemistry: LS-B2335 was validated for use in immunohistochemistry on a panel of 21 formalin-fixed, paraffin-embedded (FFPE) human tissues after heat induced antigen retrieval in pH 6.0 citrate buffer. After incubation with the primary antibody, slides were incubated with biotinylated secondary antibody, followed by alkaline phosphatase-streptavidin and chromogen. The stained slides were evaluated by a pathologist to confirm staining specificity. The optimal working concentration for LS-B2335 was determined to be 2.5-5 ug/ml.
Uses:	IHC - Paraffin (2.5 - 5 µg/ml), ELISA (1:32000) (Optimal dilution to be determined by the researcher)
Size:	50 µg
Concentration:	0.5 mg/ml

Immunohistochemistry Image:



Anti-ENPP1 antibody IHC of human pancreas. Immunohistochemistry of formalin-fixed, paraffin-embedded tissue after heat-induced antigen retrieval. Antibody LS-B2335 concentration 5 ug/ml.

Immunohistochemistry Image:



Anti-ENPP1 antibody IHC of human liver. Immunohistochemistry of formalin-fixed, paraffin-embedded tissue after heat-induced antigen retrieval. Antibody LS-B2335 concentration 5 ug/ml.

Requested From:

Japan

Laboratory Reagent For In Vitro Research Use Only

Not for resale without prior written consent from LifeSpan BioSciences, Inc.

Created on 9/23/2014

© 2014 LifeSpan BioSciences