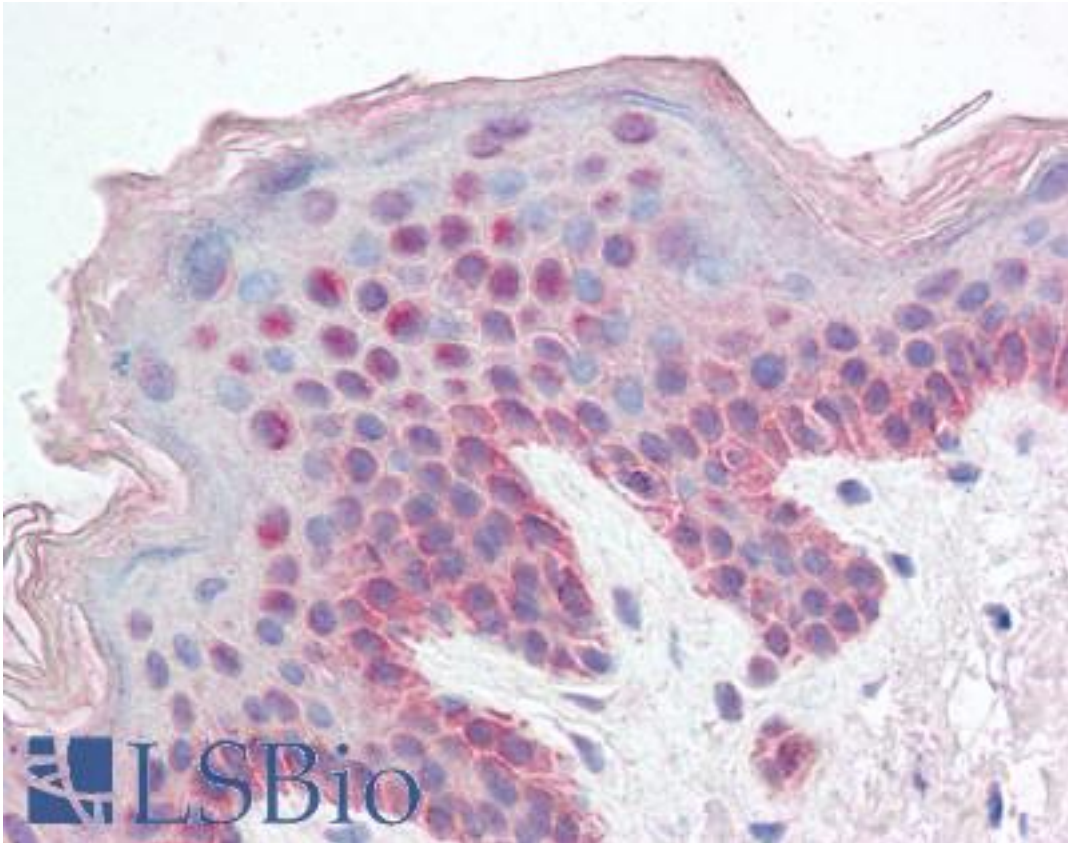


KDM2B / FBXL10 Goat anti-Human Polyclonal (C-Terminus) Antibody - LS-B2333 - LSBio	
CatalogID:	LS-B2333
Validation:	This antibody replaces catalog number LS-C54822. It has been validated for use in the following assays: IHC-P.
Target:	lysine (K)-specific demethylase 2B (KDM2B)
Synonyms:	KDM2B Antibody, CXXC2 Antibody, Fbl10 Antibody, F-box/LRR-repeat protein 10 Antibody, JHDM1B Antibody, F-box protein FBL10 Antibody, FBXL10 Antibody, Lysine-specific demethylase 2B Antibody, PCCX2 Antibody, Protein JEMMA Antibody
Family / Subfamily:	F-Box
Host	KDM2B antibody was produced in Goat
Clonality:	Polyclonal
Immunogen Species:	KDM2B / FBXL10 antibody was raised against Human
Antigen Type:	Synthetic peptide
Immunogen:	KDM2B / FBXL10 antibody was raised against synthetic peptide C-FGQVEEKLLQKLS from the C-terminus of human KDM2B / FBXL10 (NP_115979.3). Percent identity by BLAST analysis: Human, Gorilla, Gibbon, Monkey, Marmoset, Mouse, Rat, Dog, Bovine, Bat, Hamster, Elephant, Panda, Horse, Rabbit, Turkey, Chicken, Platypus (100%); Xenopus (85%).
Specificity:	Human KDM2B / FBXL10. This antibody is expected to recognize isoform a (NP_115979.3) only.
Epitope:	C-Terminus
Reactivity:	Human, Gorilla, Gibbon, Monkey, Mouse, Rat, Bat, Bovine, Dog, Hamster, Horse, Rabbit, Chicken
Purification:	Immunoaffinity purified
Presentation:	Tris-buffered saline, pH 7.3, 0.5% BSA, 0.02% sodium azide
Recommended Storage:	Store at -20°C. Minimize freezing and thawing.
Usage Summary:	Immunohistochemistry: LS-B2333 was validated for use in immunohistochemistry on a panel of 21 formalin-fixed, paraffin-embedded (FFPE) human tissues after heat induced antigen retrieval in pH 6.0 citrate buffer. After incubation with the primary antibody, slides were incubated with biotinylated secondary antibody, followed by alkaline phosphatase-streptavidin and chromogen. The stained slides were evaluated by a pathologist to confirm staining specificity. The optimal working concentration for LS-B2333 was determined to be 5 ug/ml.
Uses:	IHC - Paraffin (5 µg/ml), ELISA (1:32000) (Optimal dilution to be determined by the researcher)
Size:	50 µg
Concentration:	0.5 mg/ml

Immunohistochemistry Image:



Anti-KDM2B antibody IHC of human skin. Immunohistochemistry of formalin-fixed, paraffin-embedded tissue after heat-induced antigen retrieval. Antibody LS-B2333 concentration 5 ug/ml.

Requested From:

Japan

Laboratory Reagent For In Vitro Research Use Only

Not for resale without prior written consent from LifeSpan BioSciences, Inc.

Created on 9/23/2014

© 2014 LifeSpan BioSciences