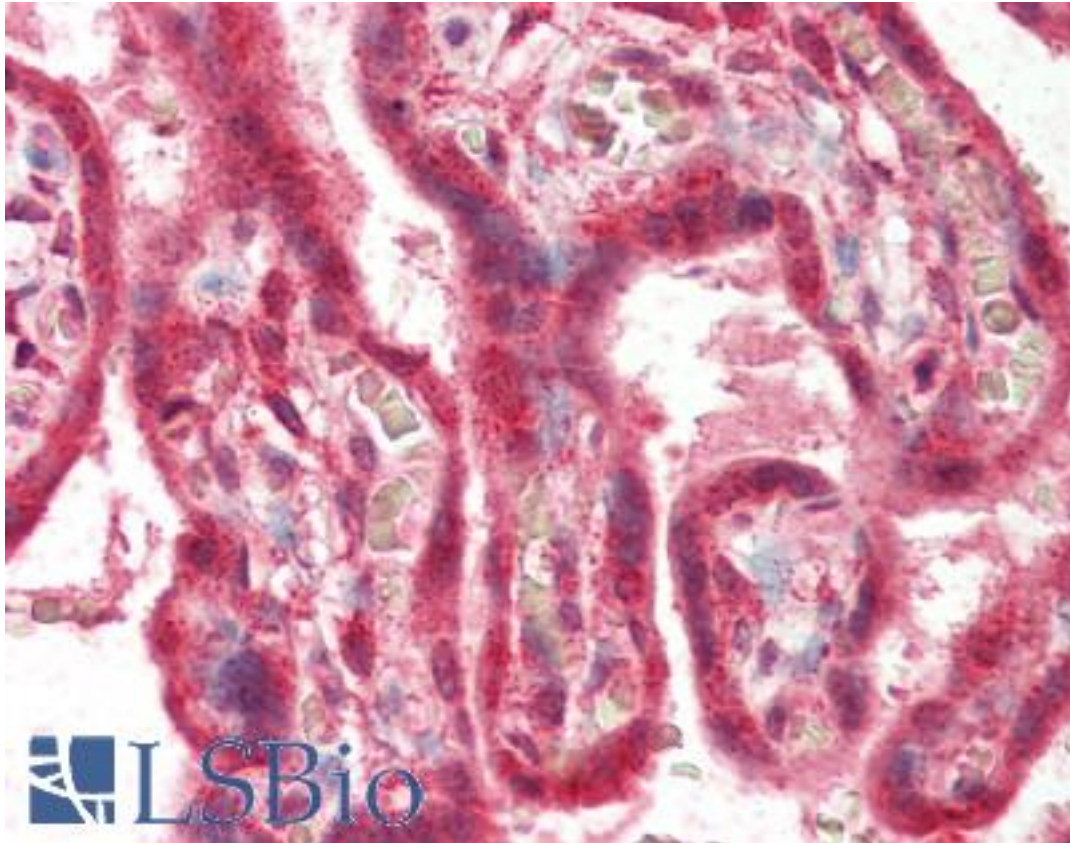


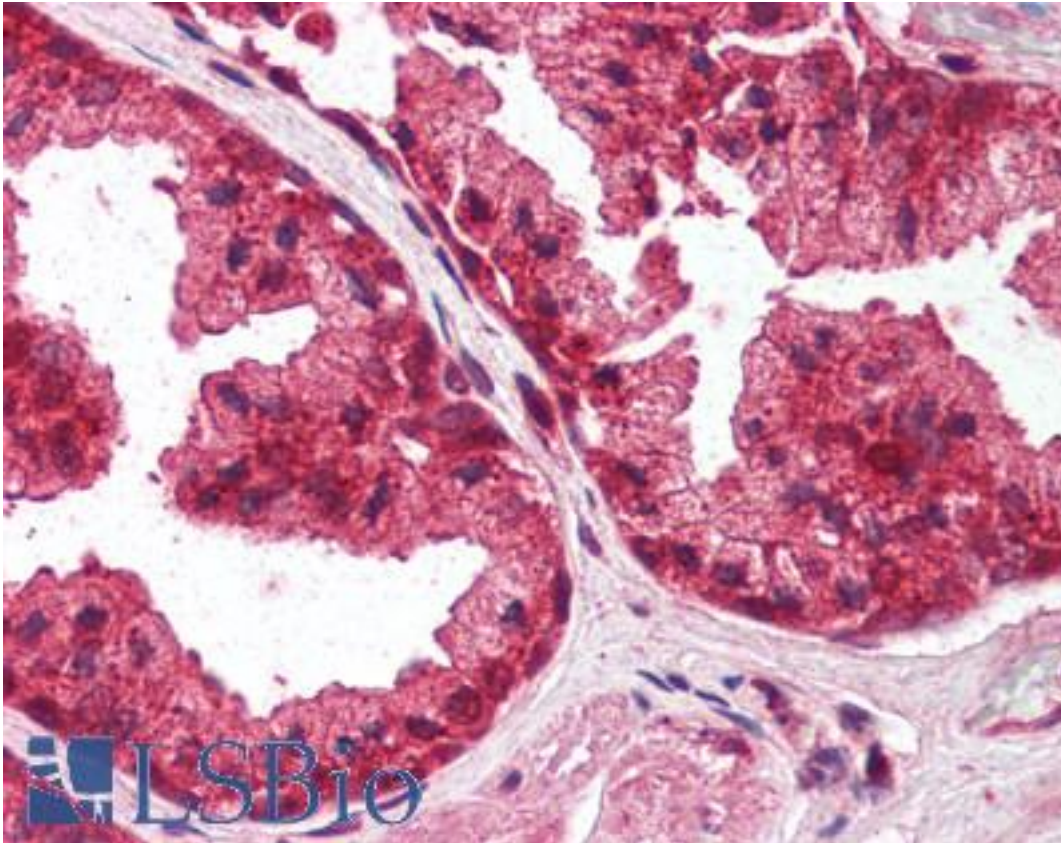
PLEKHA8 Goat anti-Human Polyclonal (C-Terminus) Antibody - LS-B2332 - LSBio	
<b>CatalogID:</b>	LS-B2332
<b>Validation:</b>	This antibody replaces catalog number LS-C54814. It has been validated for use in the following assays: IHC-P.
<b>Target:</b>	pleckstrin homology domain containing, family A (phosphoinositide binding specific) member 8 (PLEKHA8)
<b>Synonyms:</b>	PLEKHA8 Antibody, FAPP2 Antibody, FAPP-2 Antibody, HFAPP2 Antibody
<b>Host</b>	PLEKHA8 antibody was produced in Goat
<b>Clonality:</b>	Polyclonal
<b>Immunogen Species:</b>	PLEKHA8 antibody was raised against Human
<b>Antigen Type:</b>	Synthetic peptide
<b>Immunogen:</b>	PLEKHA8 antibody was raised against synthetic peptide C-DIQTALRNPTENT from the C-terminus of human PLEKHA8 (NP_116028.1). Percent identity with other species by BLAST analysis: Human (100%).
<b>Specificity:</b>	Human PLEKHA8.
<b>Epitope:</b>	C-Terminus
<b>Reactivity:</b>	Human
<b>Purification:</b>	Immunoaffinity purified
<b>Presentation:</b>	Tris-buffered saline, pH 7.3, 0.5% BSA, 0.02% sodium azide
<b>Recommended Storage:</b>	Store at -20°C. Minimize freezing and thawing.
<b>Usage Summary:</b>	Immunohistochemistry: LS-B2332 was validated for use in immunohistochemistry on a panel of 21 formalin-fixed, paraffin-embedded (FFPE) human tissues after heat induced antigen retrieval in pH 6.0 citrate buffer. After incubation with the primary antibody, slides were incubated with biotinylated secondary antibody, followed by alkaline phosphatase-streptavidin and chromogen. The stained slides were evaluated by a pathologist to confirm staining specificity. The optimal working concentration for LS-B2332 was determined to be 2.5-5 ug/ml.
<b>Uses:</b>	IHC - Paraffin (2.5 - 5 µg/ml), ELISA (1:64000) (Optimal dilution to be determined by the researcher)
<b>Size:</b>	50 µg
<b>Concentration:</b>	0.5 mg/ml

**Immunohistochemistry Image:**



Anti-PLEKHA8 antibody IHC of human placenta. Immunohistochemistry of formalin-fixed, paraffin-embedded tissue after heat-induced antigen retrieval. Antibody LS-B2332 concentration 5 ug/ml.

**Immunohistochemistry Image:**



Anti-PLEKHA8 antibody IHC of human prostate. Immunohistochemistry of formalin-fixed, paraffin-embedded tissue after heat-induced antigen retrieval. Antibody LS-B2332 concentration 5 ug/ml.

**Requested From:**

Japan

Laboratory Reagent For In Vitro Research Use Only

Not for resale without prior written consent from LifeSpan BioSciences, Inc.

Created on 9/23/2014

© 2014 LifeSpan BioSciences