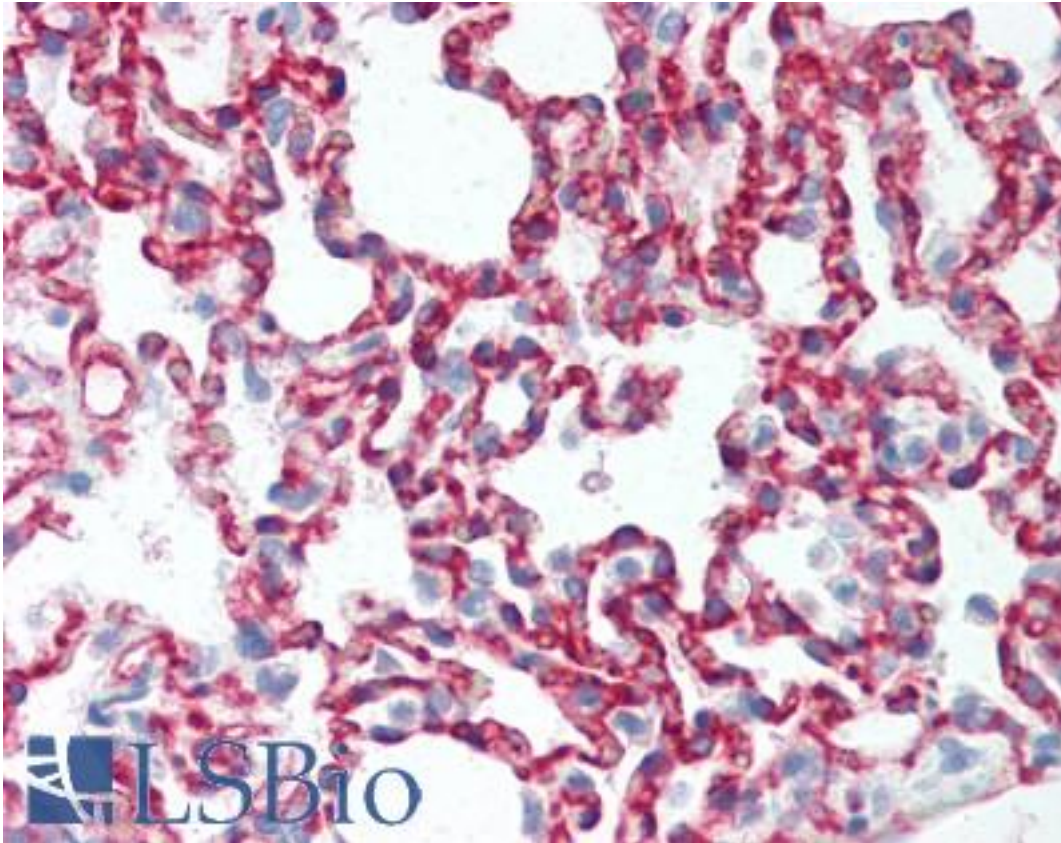


CLDN5 / Claudin 5 Mouse anti-Mouse Monoclonal Antibody - LS-B2331 - LSBio	
<b>CatalogID:</b>	LS-B2331
<b>Validation:</b>	This antibody replaces catalog number LS-C6158. It has been validated for use in the following assays: IHC-P.
<b>Target:</b>	claudin 5 (CLDN5)
<b>Synonyms:</b>	CLDN5 Antibody, BEC1 Antibody, AWAL Antibody, Claudin-5 Antibody, CPETRL1 Antibody, TMDVCF Antibody, TMVCF Antibody, Claudin 5 Antibody
<b>Family / Subfamily:</b>	Claudin / not assigned-Claudin
<b>Host</b>	CLDN5 antibody was produced in Mouse
<b>Clonality:</b>	Monoclonal
<b>Isotype:</b>	IgG1
<b>Immunogen Species:</b>	CLDN5 / Claudin 5 antibody was raised against Mouse
<b>Antigen Type:</b>	Synthetic peptide
<b>Immunogen:</b>	CLDN5 / Claudin 5 antibody was raised against synthetic peptide derived from the mouse Claudin-5 protein.
<b>Specificity:</b>	Recognizes rat endogenous Claudin-5 protein at ~22-24kD. Species cross-reactivity: WB: mouse, IHC: human.
<b>Reactivity:</b>	Mouse, Rat
<b>Purification:</b>	Protein A purified
<b>Presentation:</b>	PBS, pH 7.4, 0.1% sodium azide.
<b>Recommended Storage:</b>	Long term: -20°C; Short term: +4°C; Avoid freeze-thaw cycles.
<b>Usage Summary:</b>	Immunohistochemistry: LS-B2331 was validated for use in immunohistochemistry on a panel of 21 formalin-fixed, paraffin-embedded (FFPE) human tissues after heat induced antigen retrieval in pH 6.0 citrate buffer. After incubation with the primary antibody, slides were incubated with biotinylated secondary antibody, followed by alkaline phosphatase-streptavidin and chromogen. The stained slides were evaluated by a pathologist to confirm staining specificity. The optimal working concentration for LS-B2331 was determined to be 5-10 ug/ml. Positive control: Rat lung, kidney, and small intestine homogenates and mouse lung homogenates.
<b>Uses:</b>	IHC - Paraffin (5 - 10 µg/ml), Western blot (1 - 3 µg/ml), ELISA (0.1 - 1 µg/ml) (Optimal dilution to be determined by the researcher)
<b>Size:</b>	50 µg
<b>Concentration:</b>	0.5 mg/ml

**Immunohistochemistry Image:**



Anti-CLDN5 / Claudin 5 antibody IHC of rat lung. Immunohistochemistry of formalin-fixed, paraffin-embedded tissue after heat-induced antigen retrieval. Antibody LS-B2331 concentration 10 ug/ml.

**Requested From:**

Japan

Laboratory Reagent For In Vitro Research Use Only

Not for resale without prior written consent from LifeSpan BioSciences, Inc.

Created on 9/23/2014

© 2014 LifeSpan BioSciences